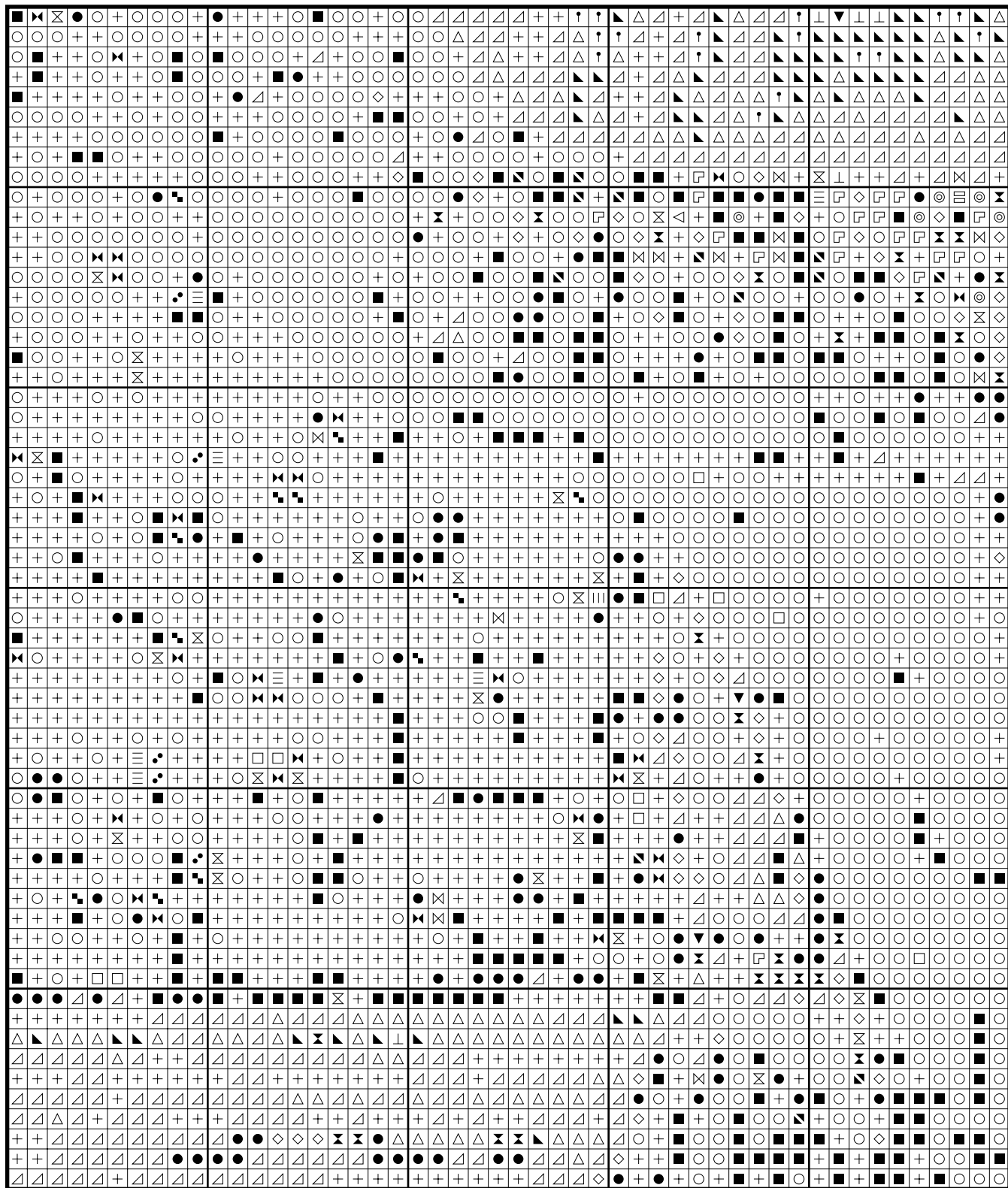


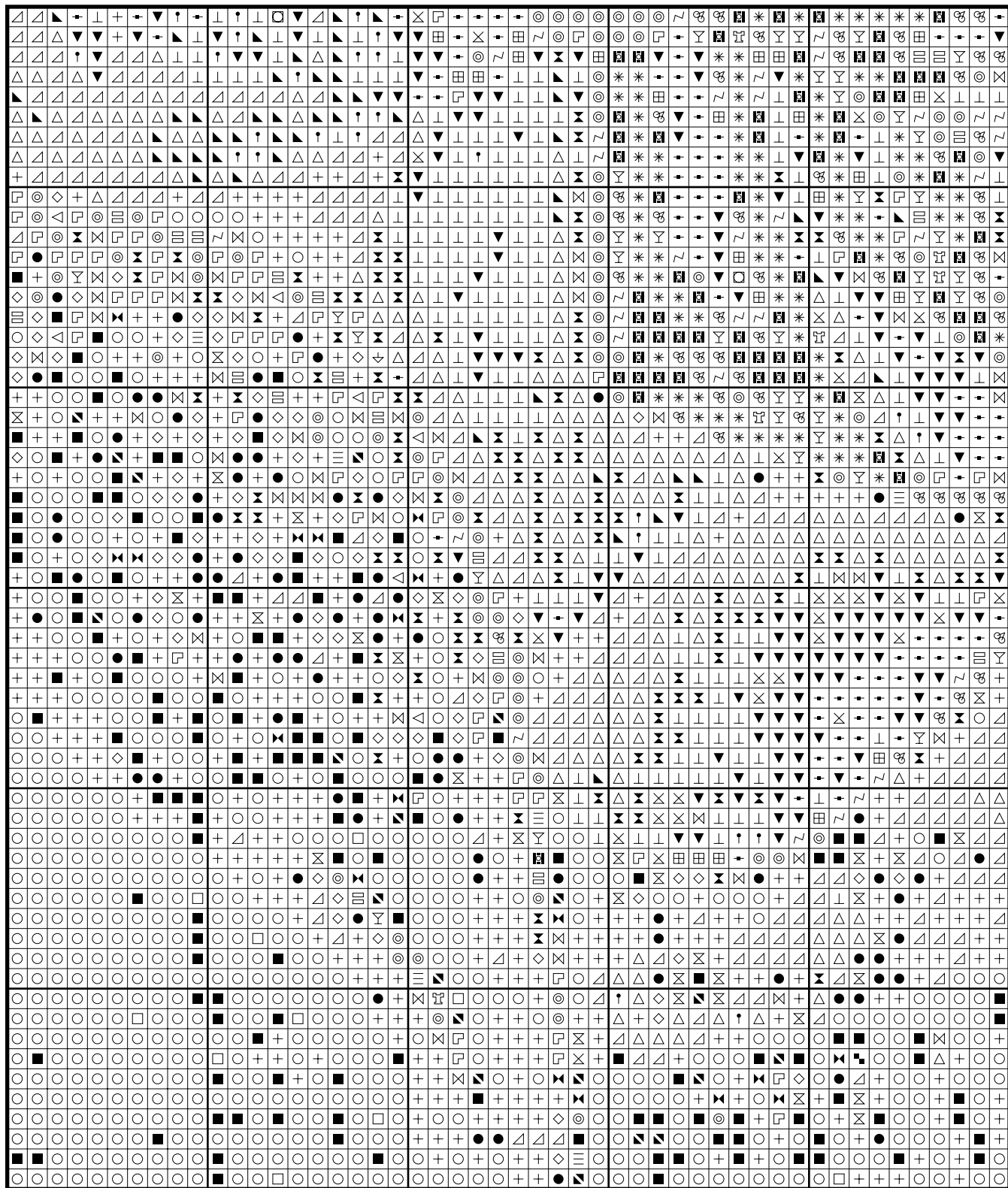
Home Cat by Ruth Sanderson

☒	DMC 820 Very Dark Royal Blue
◻	DMC 939 Very Dark Navy Blue
◉	DMC 310 Black
+	DMC 3371 Black Brown
■	DMC 934 Black Avocado Green
▲	DMC 938 Ultra Dark Coffee Brown
●	DMC 839 Dark Beige Brown
⊠	DMC 3802 Very Dark Antique Mauve
◇	DMC 3781 Dark Mocha Brown
▣	DMC 3362 Dark Pine Green
⊞	DMC 3021 Very Dark Brown Gray
⊙	DMC 645 Very Dark Beaver Gray
⊕	DMC 798 Dark Delft Blue
◻	DMC 3346 Hunter Green
▤	DMC 931 Medium Antique Blue
↑	DMC 3777 Very Dark Terra Cotta
△	DMC 300 Very Dark Mahogany
⊠	DMC 869 Very Dark Hazelnut Brown
▴	DMC 975 Dark Golden Brown
⊠	DMC 611 Drab Brown
⊥	DMC 780 Ultra Very Dark Topaz
▼	DMC 782 Dark Topaz
⊠	DMC 3726 Dark Antique Mauve
▣	DMC 3740 Dark Antique Violet
◁	DMC 581 Moss Green
▤	DMC 3012 Medium Khaki Green
◻	DMC 976 Medium Golden Brown
+	DMC 783 Medium Topaz
⊞	DMC 437 Light Tan
▤	DMC 973 Bright Canary
⋈	DMC 3822 Light Straw
▤	DMC 932 Light Antique Blue
≡	DMC 317 Pewter Gray
⊙	DMC 3782 Light Mocha Brown
~	DMC 729 Medium Old Gold
↓	DMC 3855 Light Autumn Gold
≡	DMC 834 Very Light Golden Olive
⊞	DMC 945 Tawny
⚍	DMC 677 Very Light Old Gold
⊞	DMC 3042 Light Antique Violet
⊞	DMC 3047 Light Yellow Beige
*	DMC 3865 Winter White

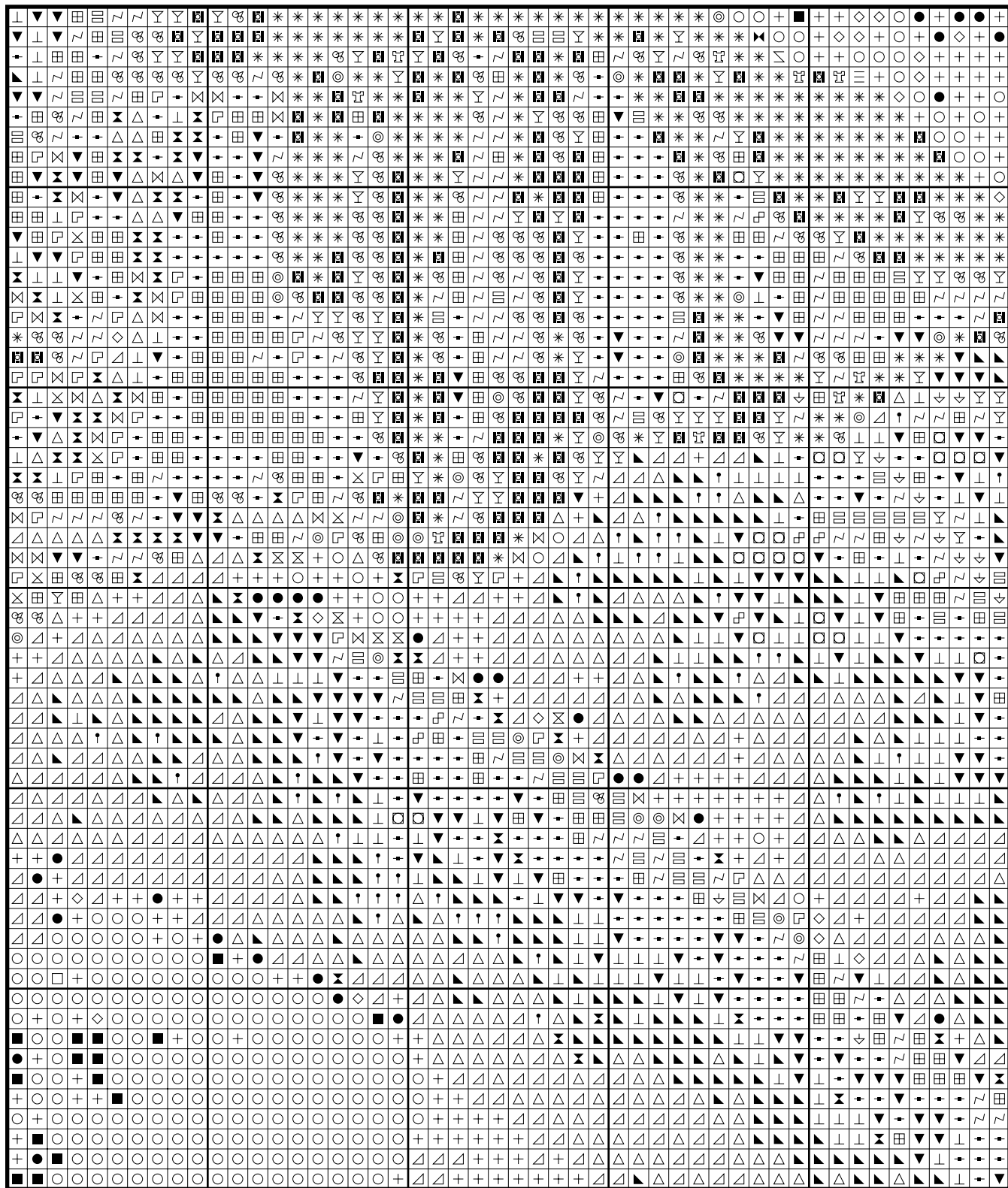
Home Cat by Ruth Sanderson



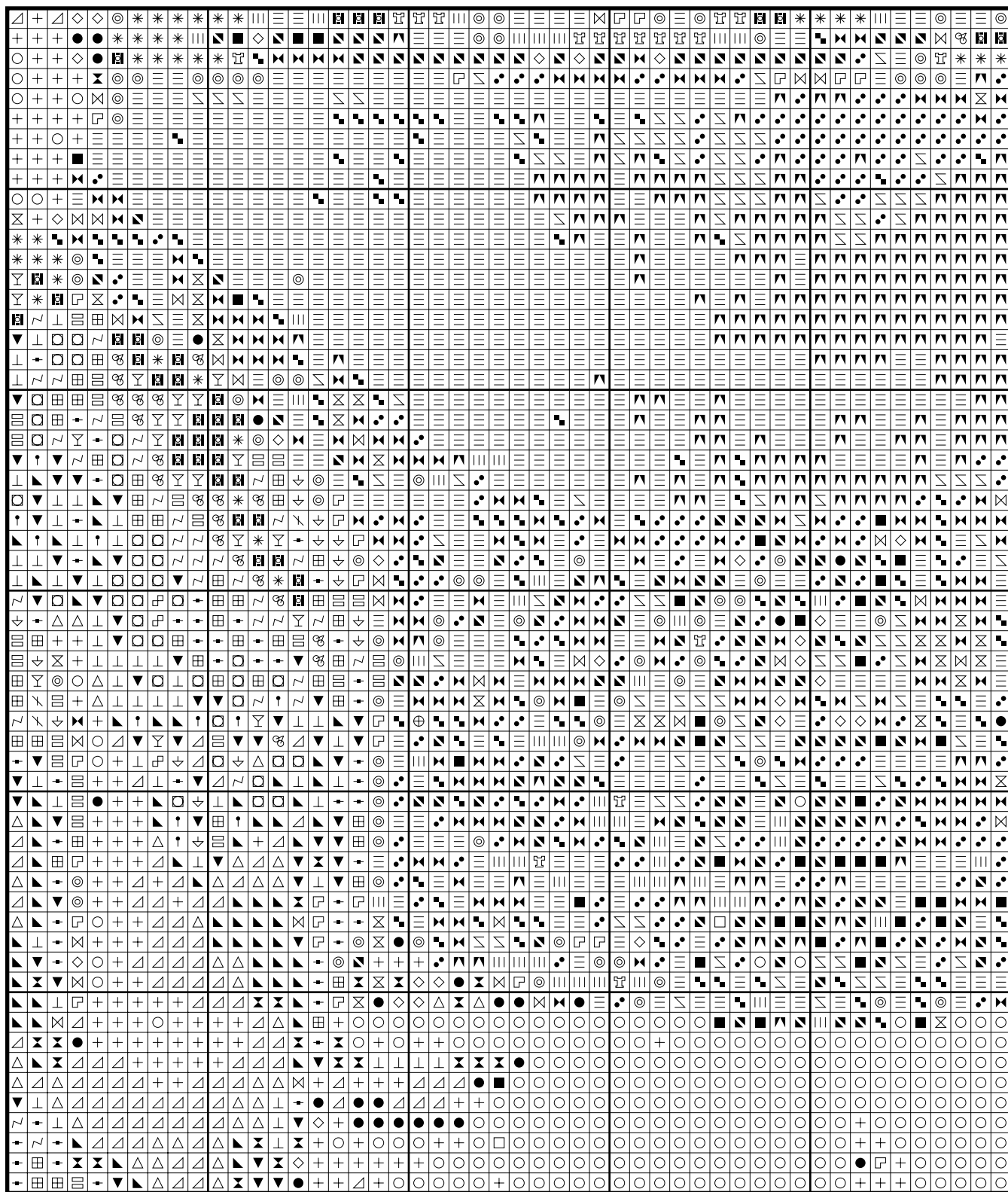
Home Cat by Ruth Sanderson



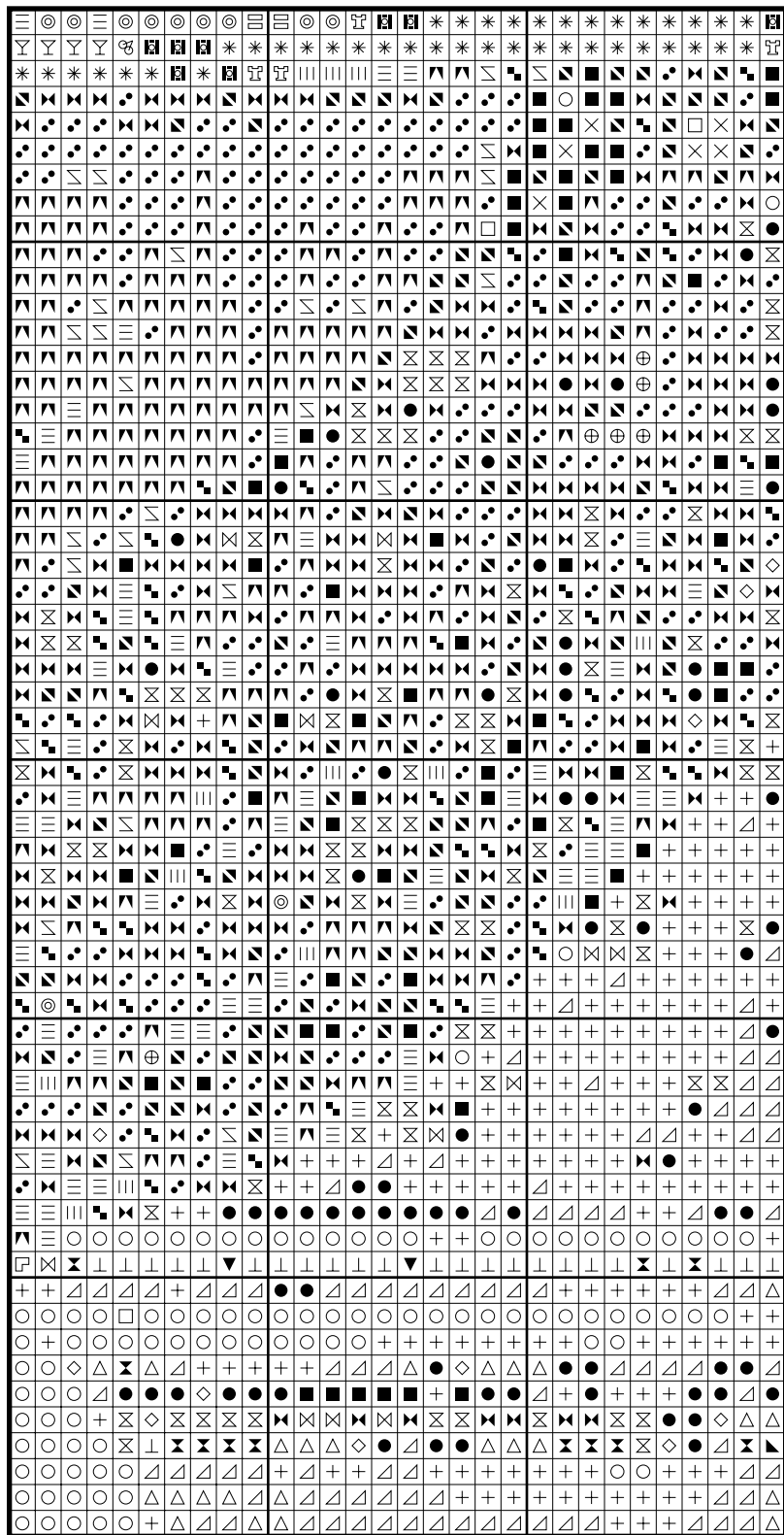
Home Cat by Ruth Sanderson



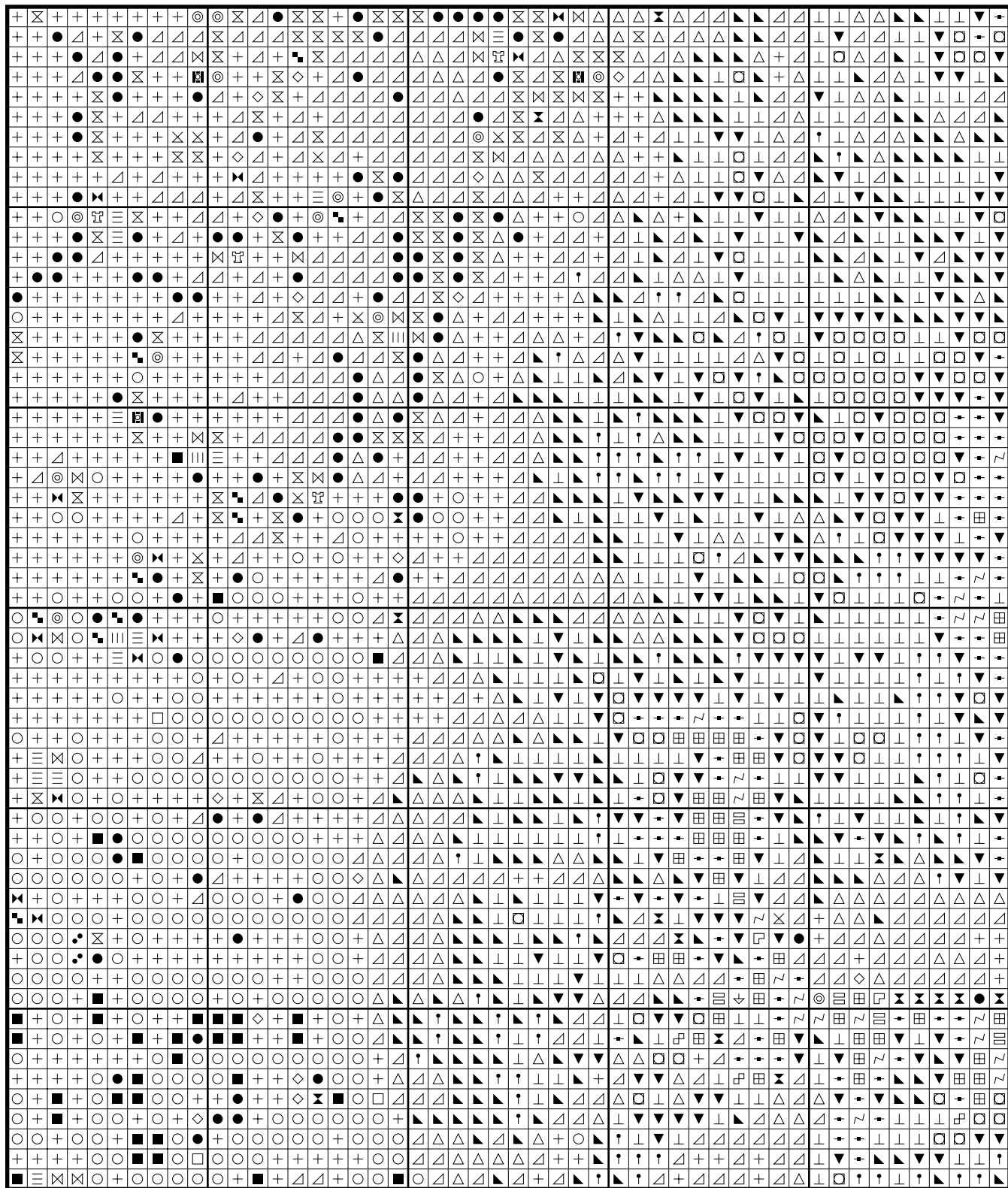
Home Cat by Ruth Sanderson



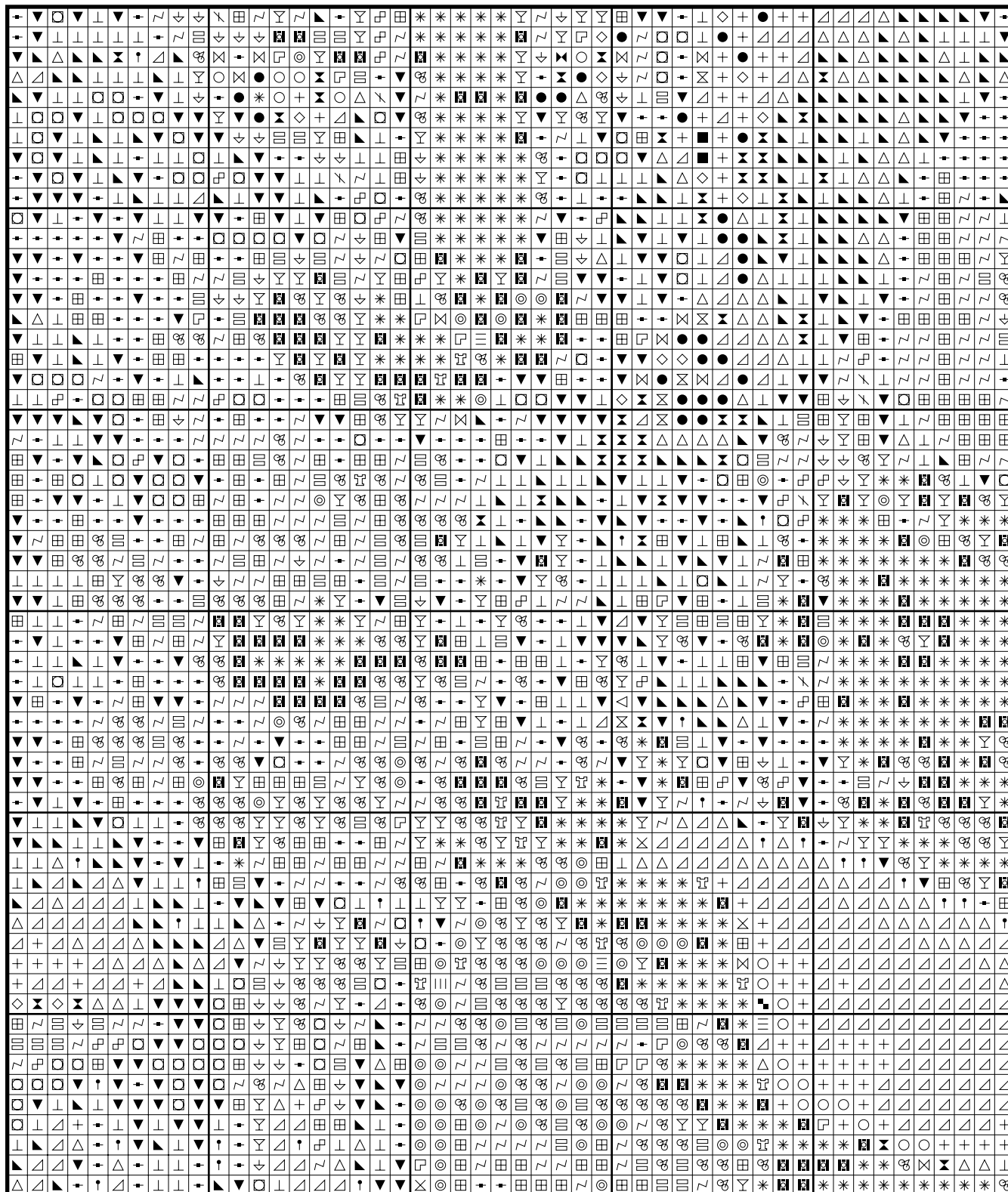
Home Cat by Ruth Sanderson



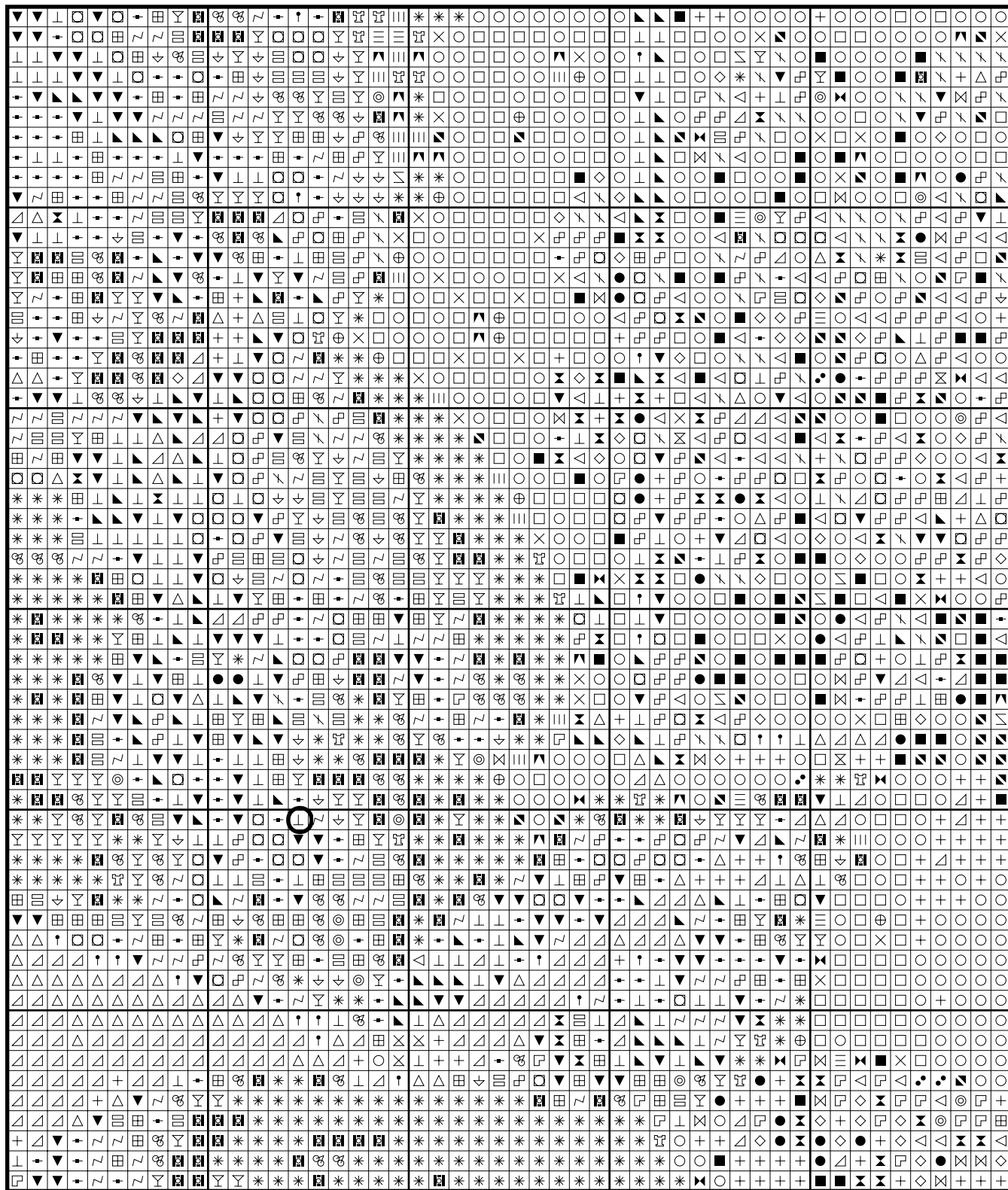
Home Cat by Ruth Sanderson



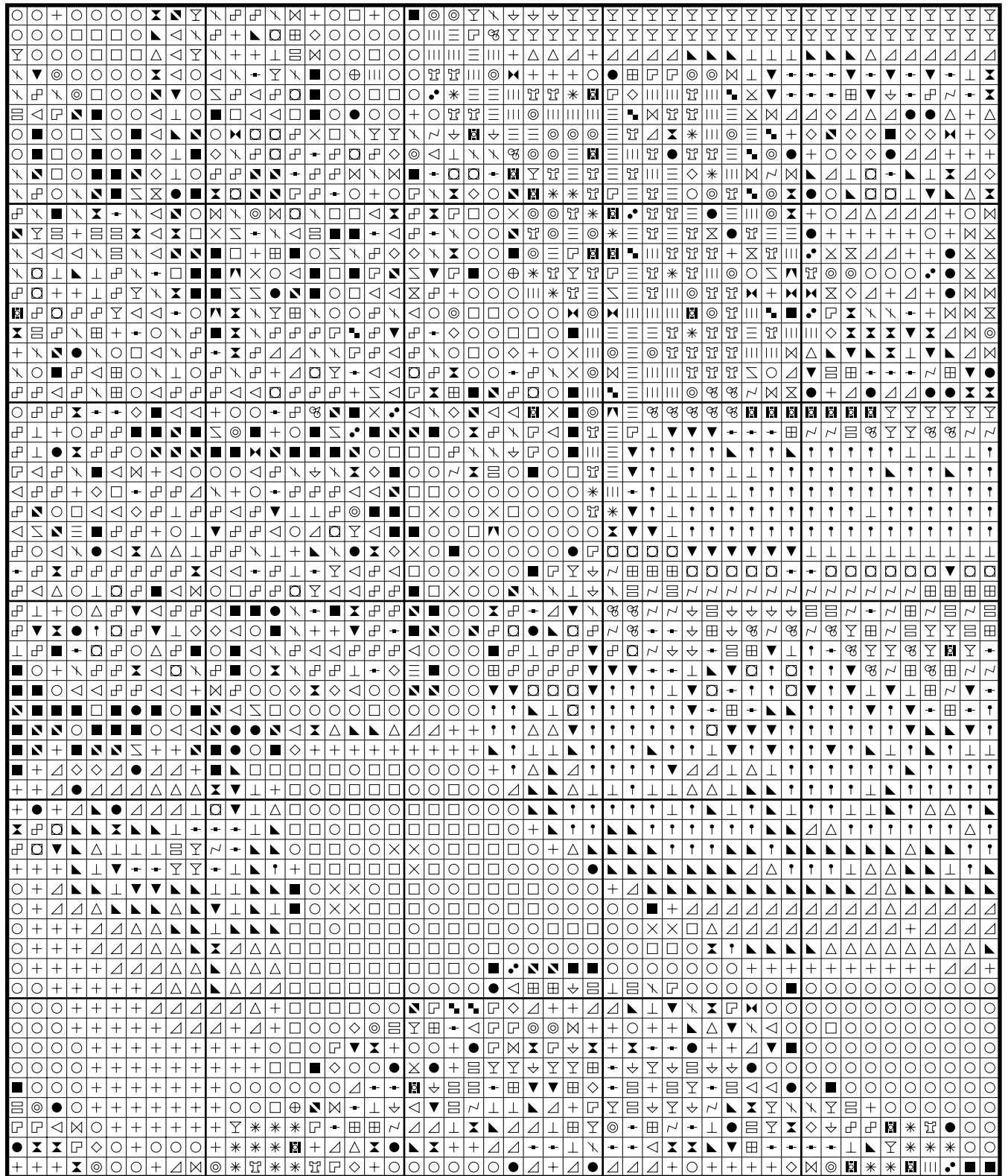
Home Cat by Ruth Sanderson



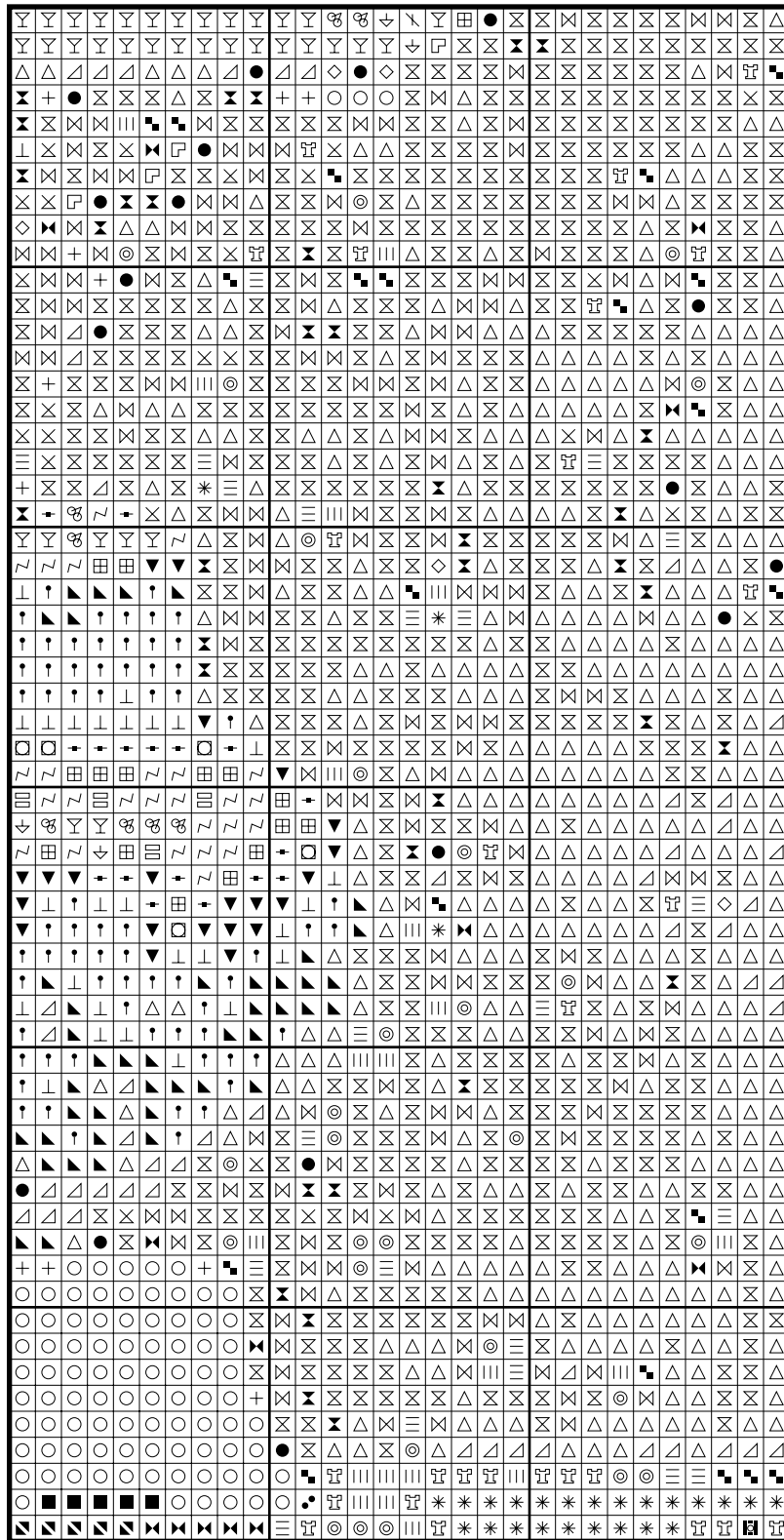
Home Cat by Ruth Sanderson



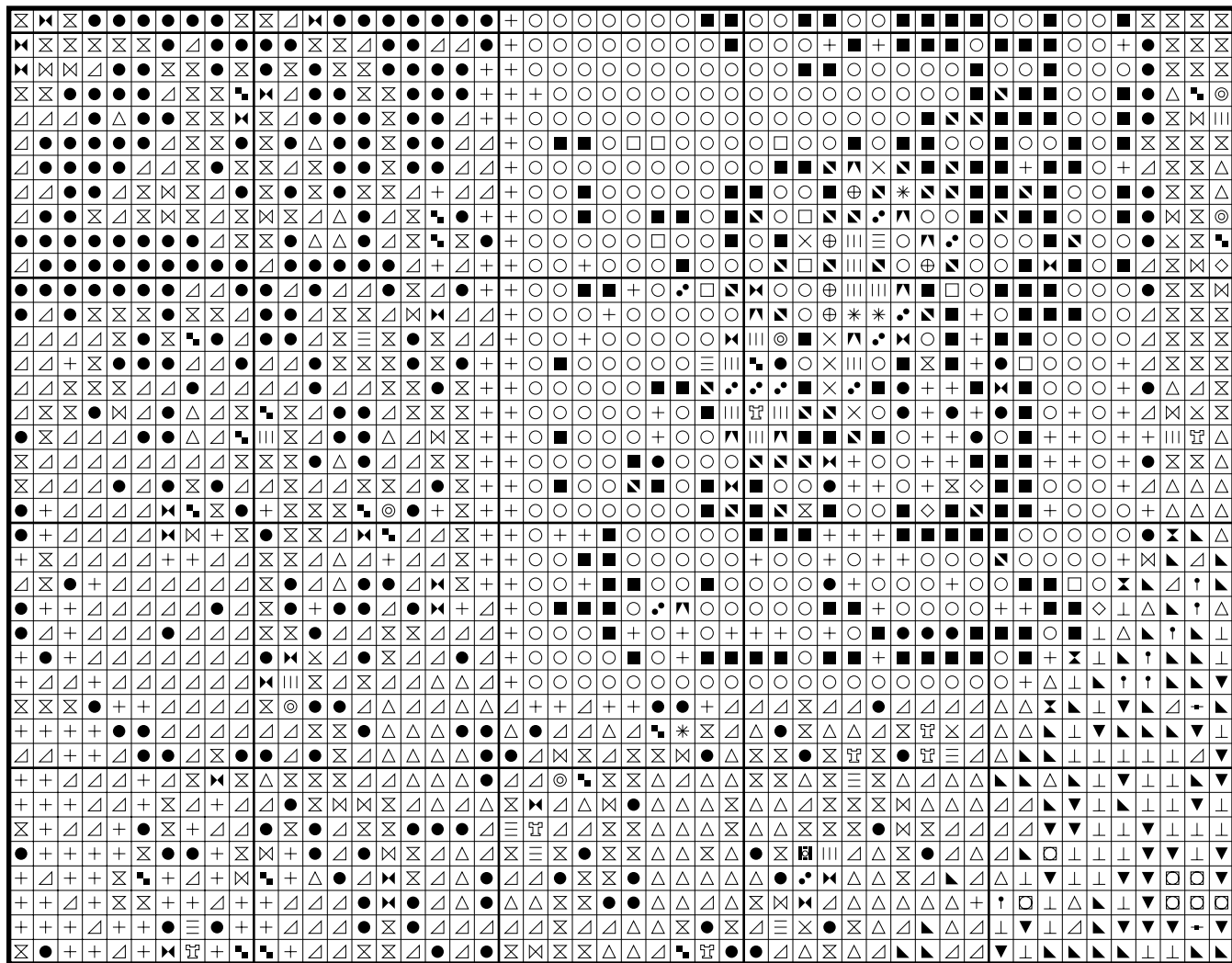
Home Cat by Ruth Sanderson



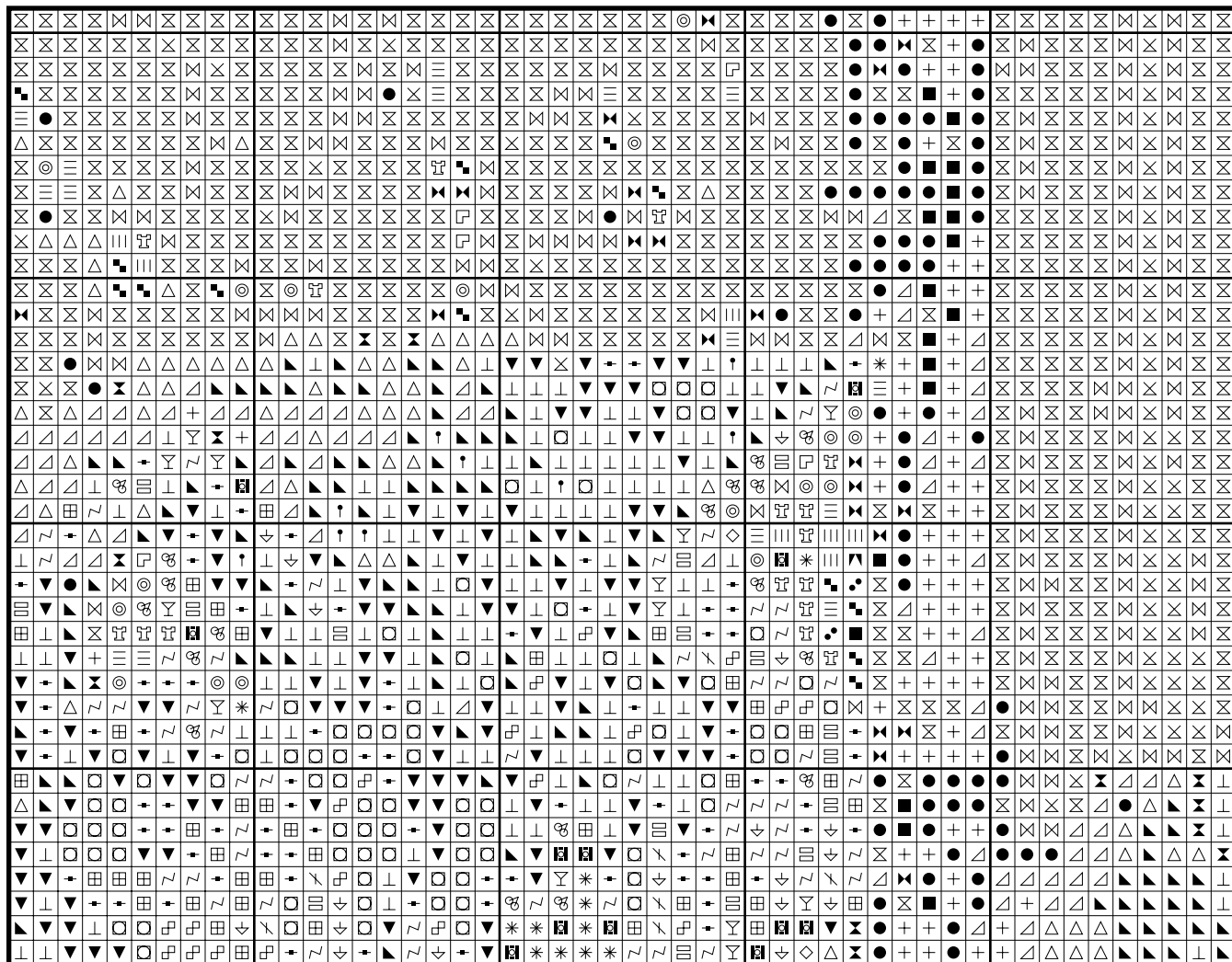
Home Cat by Ruth Sanderson



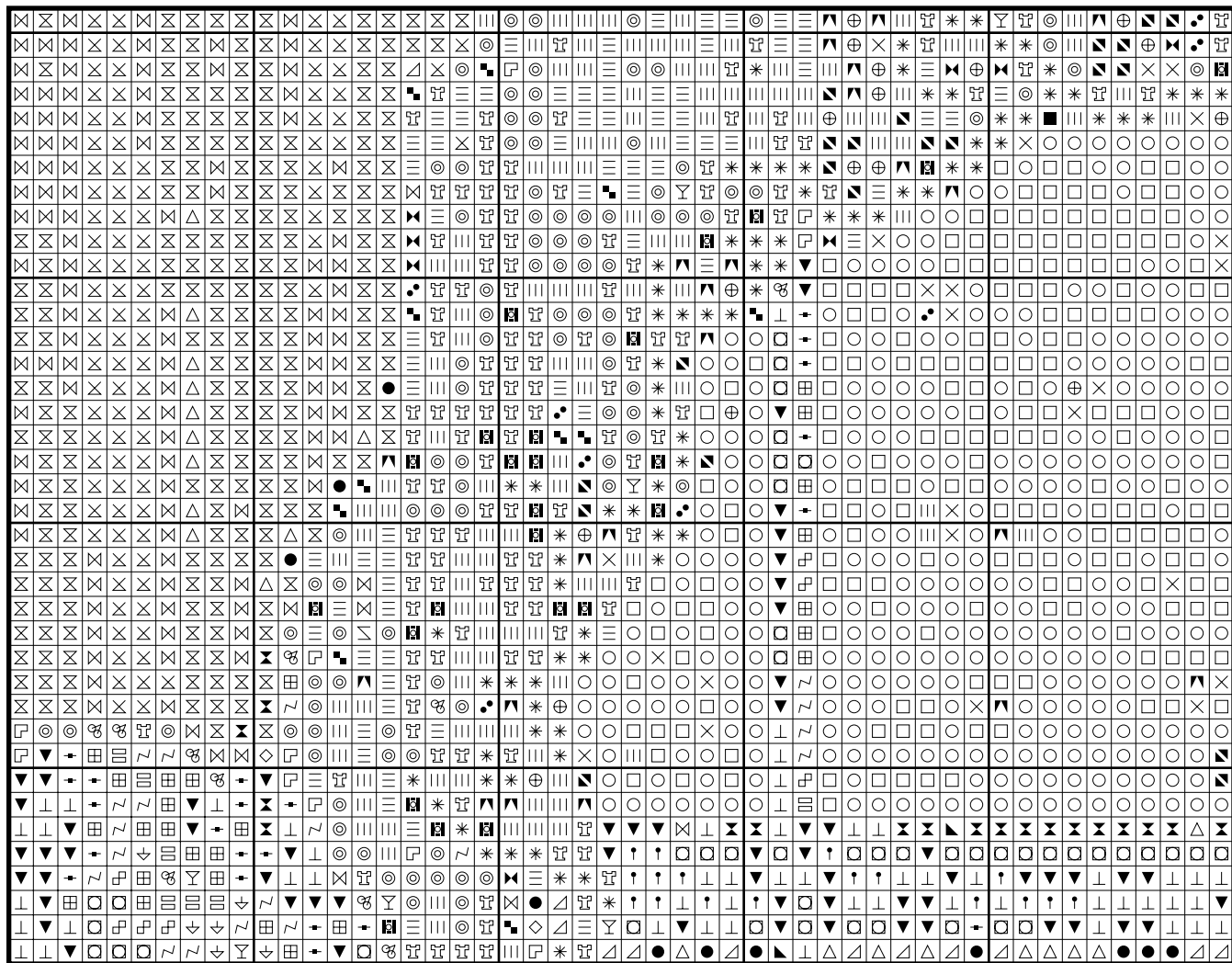
Home Cat by Ruth Sanderson



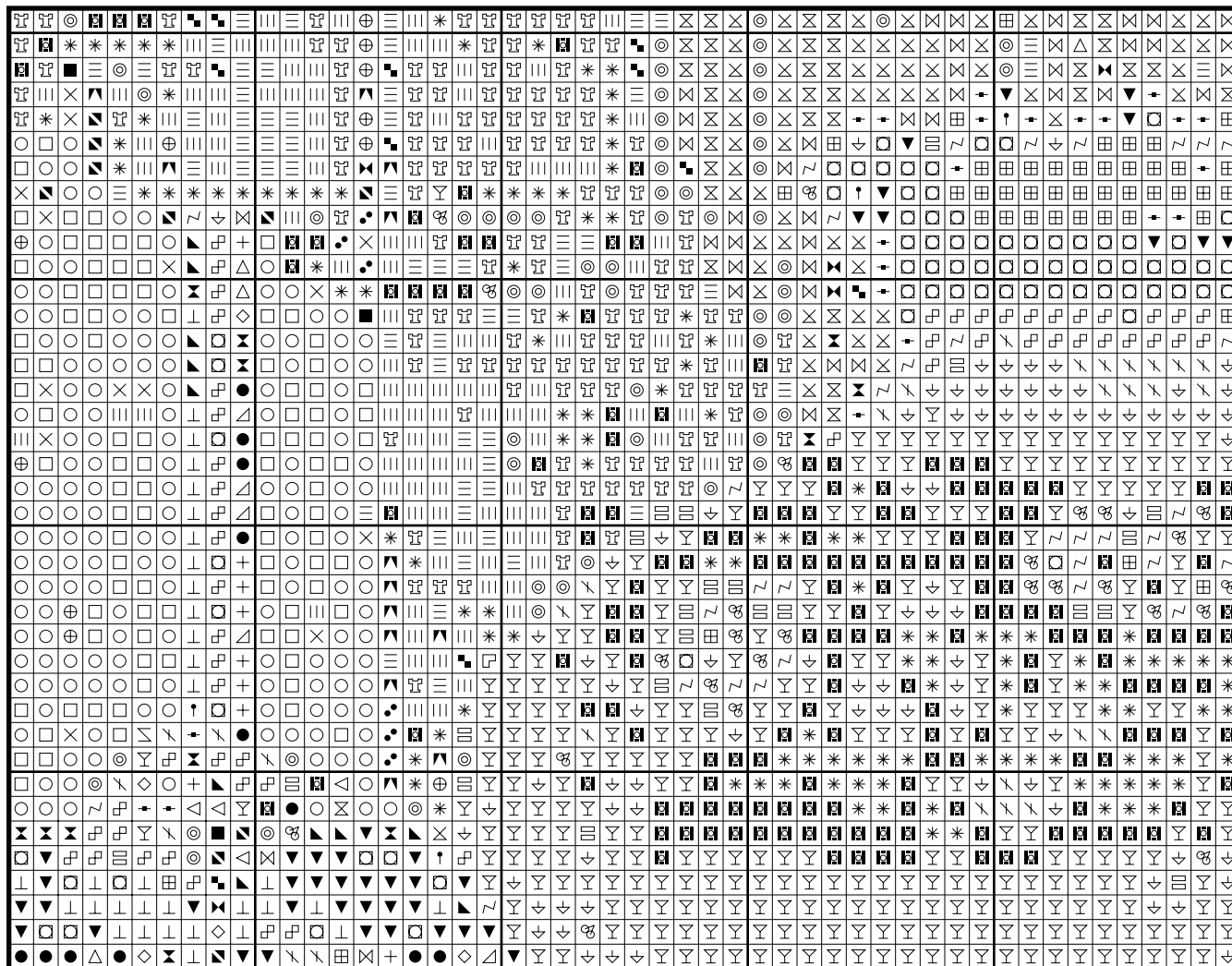
Home Cat by Ruth Sanderson



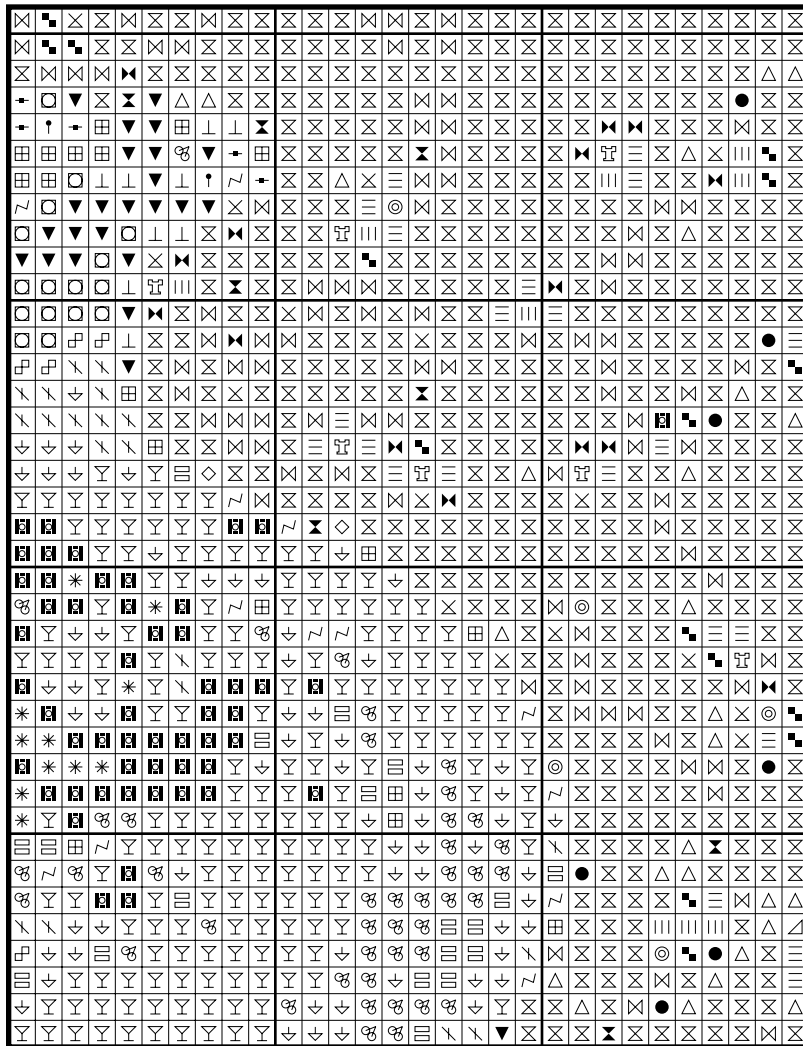
Home Cat by Ruth Sanderson



Home Cat by Ruth Sanderson



Home Cat by Ruth Sanderson



* To work out the size of the finished article, take the number of stitches and divide it by the count of your fabric (e.g 14,16,18 count aida etc) to get the size in inches. Times it by 2.5 to get centimetres.

* PLEASE NOTE: Our patterns are printed in a grid showing 10 x 10 stitches in each box. You may notice that the pages that run vertical have a maximum number of 9 rows at the top or bottom of a page. You are not missing a row or rows of stitches, this is the way our patterns print. It allows us to have larger print for your symbols.

* You should begin at the centre of the pattern which has been marked by a circle for you. To find the centre of the pattern it is just a matter of counting the vertical and horizontal stitches and divide them by half. Where the two points meet that is the centre.

* Pattern is for personal use only and is not to be sold, copied or redistributed in any form. Copyright of Artec Cross Stitch.

* 230 stitches wide by 157 stitches high, 42 colours used

DMC 820 Very Dark Royal Blue: 103 stitches
 DMC 939 Very Dark Navy Blue: 682 stitches
 DMC 310 Black: 3918 stitches
 DMC 3371 Black Brown: 3063 stitches
 DMC 934 Black Avocado Green: 927 stitches
 DMC 938 Ultra Dark Coffee Brown: 2217 stitches
 DMC 839 Dark Beige Brown: 929 stitches
 DMC 3802 Very Dark Antique Mauve: 2317 stitches
 DMC 3781 Dark Mocha Brown: 333 stitches
 DMC 3362 Dark Pine Green: 451 stitches
 DMC 3021 Very Dark Brown Gray: 581 stitches
 DMC 645 Very Dark Beaver Gray: 491 stitches
 DMC 798 Dark Delft Blue: 55 stitches
 DMC 3346 Hunter Green: 155 stitches
 DMC 931 Medium Antique Blue: 489 stitches
 DMC 3777 Very Dark Terra Cotta: 518 stitches
 DMC 300 Very Dark Mahogany: 1658 stitches
 DMC 869 Very Dark Hazelnut Brown: 531 stitches
 DMC 975 Dark Golden Brown: 1308 stitches
 DMC 611 Drab Brown: 817 stitches
 DMC 780 Ultra Very Dark Topaz: 1464 stitches
 DMC 782 Dark Topaz: 1323 stitches
 DMC 3726 Dark Antique Mauve: 323 stitches
 DMC 3740 Dark Antique Violet: 312 stitches
 DMC 581 Moss Green: 170 stitches
 DMC 3012 Medium Khaki Green: 242 stitches
 DMC 976 Medium Golden Brown: 654 stitches
 DMC 783 Medium Topaz: 1204 stitches
 DMC 437 Light Tan: 782 stitches
 DMC 973 Bright Canary: 390 stitches
 DMC 3822 Light Straw: 208 stitches
 DMC 932 Light Antique Blue: 407 stitches
 DMC 317 Pewter Gray: 975 stitches
 DMC 3782 Light Mocha Brown: 564 stitches
 DMC 729 Medium Old Gold: 713 stitches
 DMC 3855 Light Autumn Gold: 336 stitches
 DMC 834 Very Light Golden Olive: 372 stitches
 DMC 945 Tawny: 620 stitches
 DMC 677 Very Light Old Gold: 973 stitches
 DMC 3042 Light Antique Violet: 464 stitches
 DMC 3047 Light Yellow Beige: 819 stitches
 DMC 3865 Winter White: 1252 stitches

* Generally 30 stitches will use 1 metre of DMC floss.

PATTERN LAYOUT				
12	13	14	15	16
7	8	9	10	11
2	3	4	5	6

