

PORCELAIN EGG^{© 2000}

A Joan Lohr Design for Rainbow Gallery

MATERIALS: 6" x 8"—#18 mono canvas; Stretcher bars to fit; #22 Tapestry Needle; Laying Tool
1 card each of the following:

Pastel Pinks —Tudor Rose Canvas				
Rainbow Cashmere-H09	Fyre Werks-F3 [®]	Silk & Cream-BG24	Splendor [®] -S816	Very Velvet™-V210
Pastel Blues —French Blue Canvas				
Rainbow Cashmere-H08	Fyre Werks-F3 [®]	Silk & Cream-BG50	Splendor [®] -S860	Very Velvet™-V241

OR pick contrasting colors of your choice.

Splendor is made up of three bundles of four plies each. To separate into individual plies for stitching, pull out one bundle at a time and ply it.

1. Find the center of the canvas. Count 28 canvas threads to the left and down 4 canvas threads. This point is #1 on Diagram #1. With Fyre Werks (F3) work the Long-armed Cross Stitch over 26 canvas threads, ending with the compensating stitch shown at far right of diagram.
2. Work a 4 x 4 Rhodes Stitch in same Fyre Werks. See Master Chart for placement and Diagram #2 for count. This stitch drops 2 threads below the row of Long-armed Crosses just completed. It is meant to simulate the clasp of a porcelain box.
3. Complete the first row of Long-armed Crosses, again covering 26 canvas threads. Work a second row. See Master Chart.
4. Begin at the top left edge of Long-armed Cross Stitches, less one canvas thread, count up 6 threads and begin Bargello pattern. See Master Chart. Work from top to bottom, or turn the canvas, whichever makes you feel more comfortable. Whenever possible work from an empty hole to a full one in this design. The thread sequence for the Bargello is also given on the Master Chart. Feel free to experiment with both the order of the threads and the colors used.

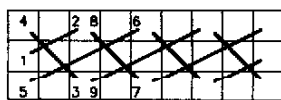


DIAGRAM #1

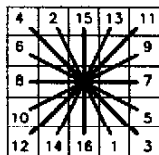
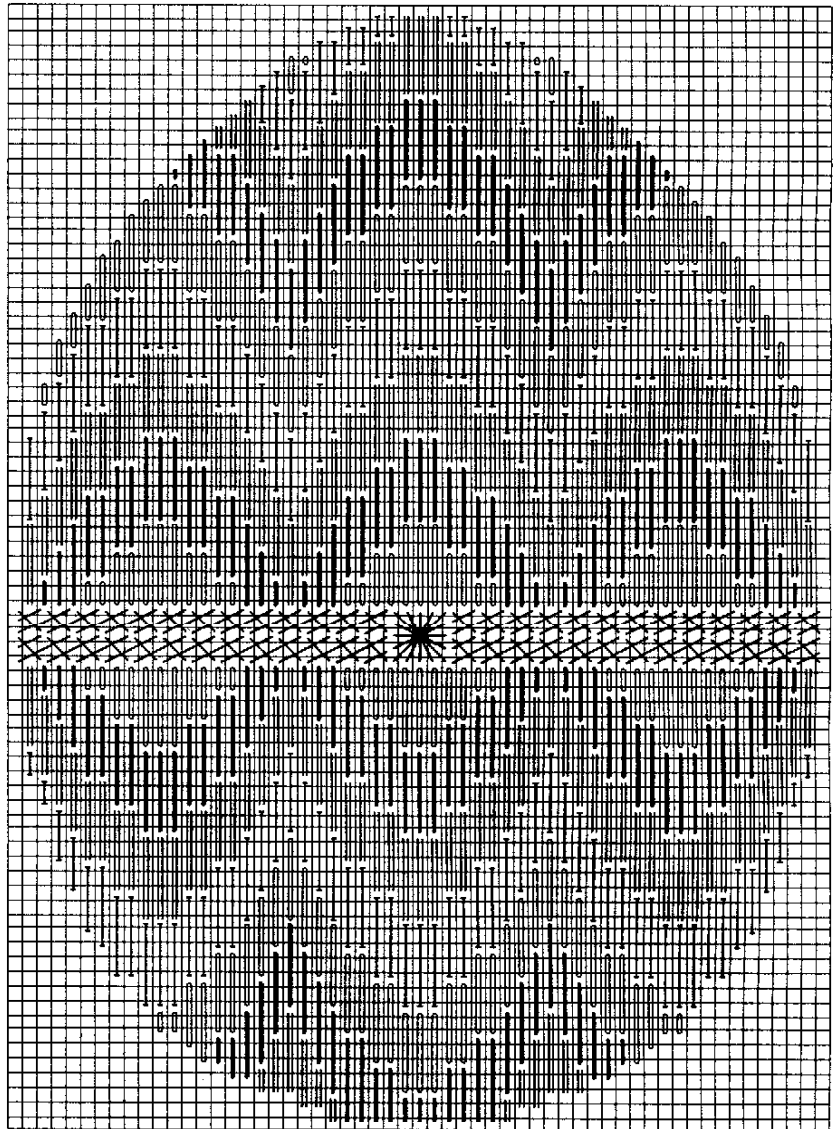
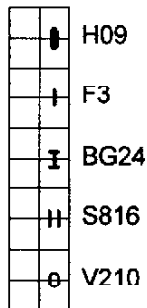


DIAGRAM #2



Rainbow Gallery

7412 Fulton Ave., #5, North Hollywood, CA 91605

Photocopying of this design is invited.