

Faery by Mette Melander

☒	DMC 437 Light Tan
□	DMC 436 Tan
○	DMC 783 Medium Topaz
+	DMC 680 Dark Old Gold
■	DMC 610 Dark Drab Brown
▲	DMC 869 Very Dark Hazelnut Brown
●	DMC 782 Dark Topaz
⊗	DMC 434 Light Brown
◇	DMC 3781 Dark Mocha Brown
▣	DMC 3776 Light Mahogany
⌂	DMC 522 Fern Green
◉	DMC 833 Light Golden Olive
⊕	DMC 3828 Hazelnut Brown
◌	DMC 3864 Light Mocha Beige
⌆	DMC 3362 Dark Pine Green
↑	DMC 562 Medium Jade
△	DMC 322 Dark Dark Baby Blue
⌘	DMC 518 Light Wedgewood
▶	DMC 791 Very Dark Cornflower Blue
⊠	DMC 3856 Ultra Very Light Mahogany
⊥	DMC 3808 Ultra Very Dark Turquoise
▼	DMC 911 Medium Emerald Green
⊗	DMC 500 Very Dark Blue Green
■	DMC 400 Dark Mahogany
◀	DMC 838 Very Dark Beige Brown
◻	DMC 976 Medium Golden Brown
◻	DMC 608 Bright Orange
→	DMC 3033 Very Light Mocha Brown
▣	DMC 842 Very Light Beige Brown
◻	DMC 341 Light Blue Violet
⌘	DMC 368 Light Pistachio Green
▣	DMC 3810 Dark Turquoise

* To work out the size of the finished article, take the number of stitches and divide it by the count of your fabric (e.g 14,16,18 count aida etc) to get the size in inches. Times it by 2.5 to get centimetres.

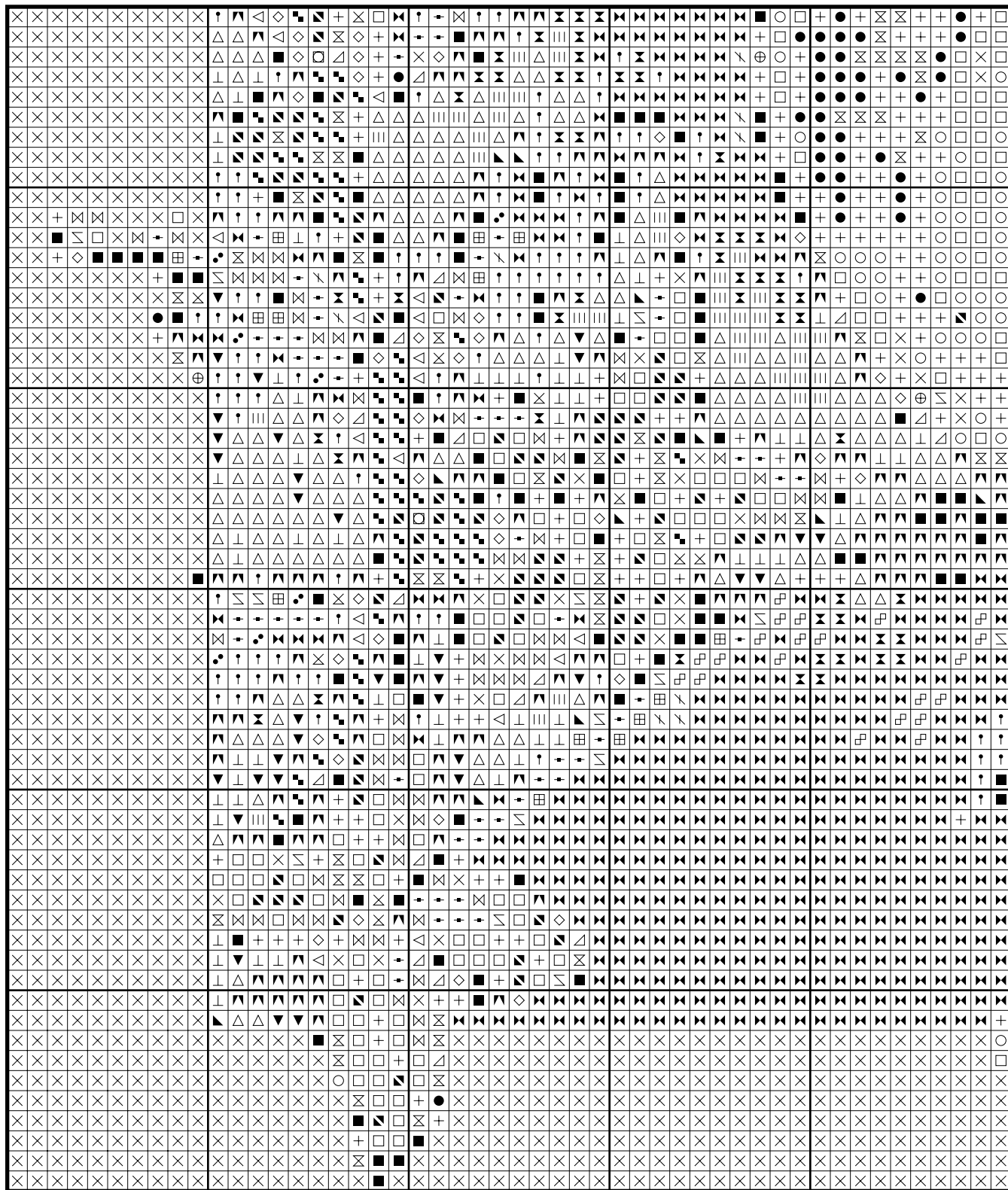
* PLEASE NOTE: Our patterns are printed in a grid showing 10 x 10 stitches in each box. You may notice that the pages that run vertical have a maximum number of 9 rows at the top or bottom of a page. You are not missing a row or rows of stitches, this is the way our patterns print. It allows us to have larger print for your symbols.

* You should begin at the centre of the pattern which has been marked by a circle for you. To find the centre of the pattern it is just a matter of counting the vertical and horizontal stitches and divide them by half. Where the two points meet that is the centre.

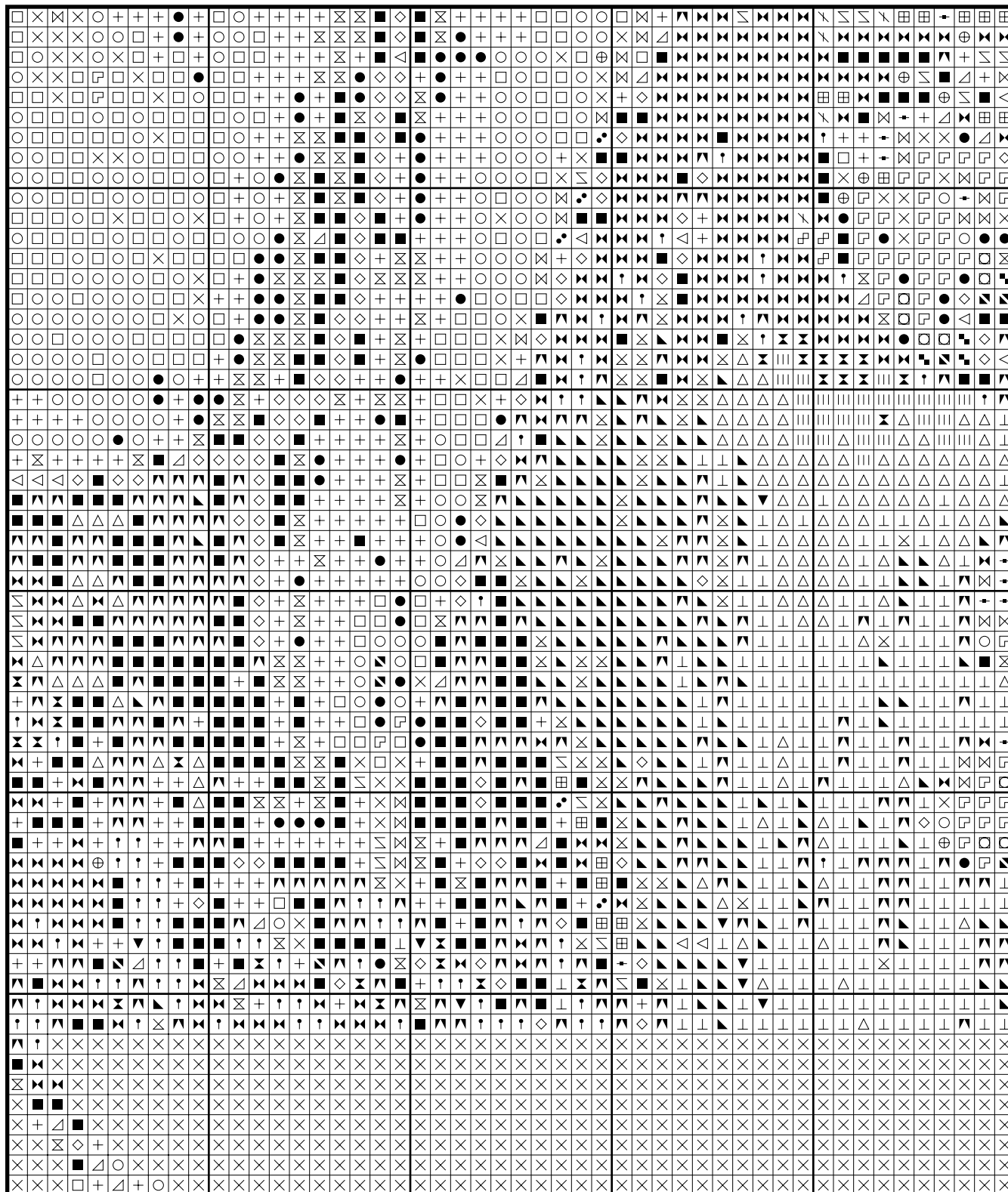
* Pattern is for personal use only and is not to be sold, copied or redistributed in any form. Copyright of Artec Cross Stitch.

* 130 stitches wide by 200 stitches high, 32 colours used

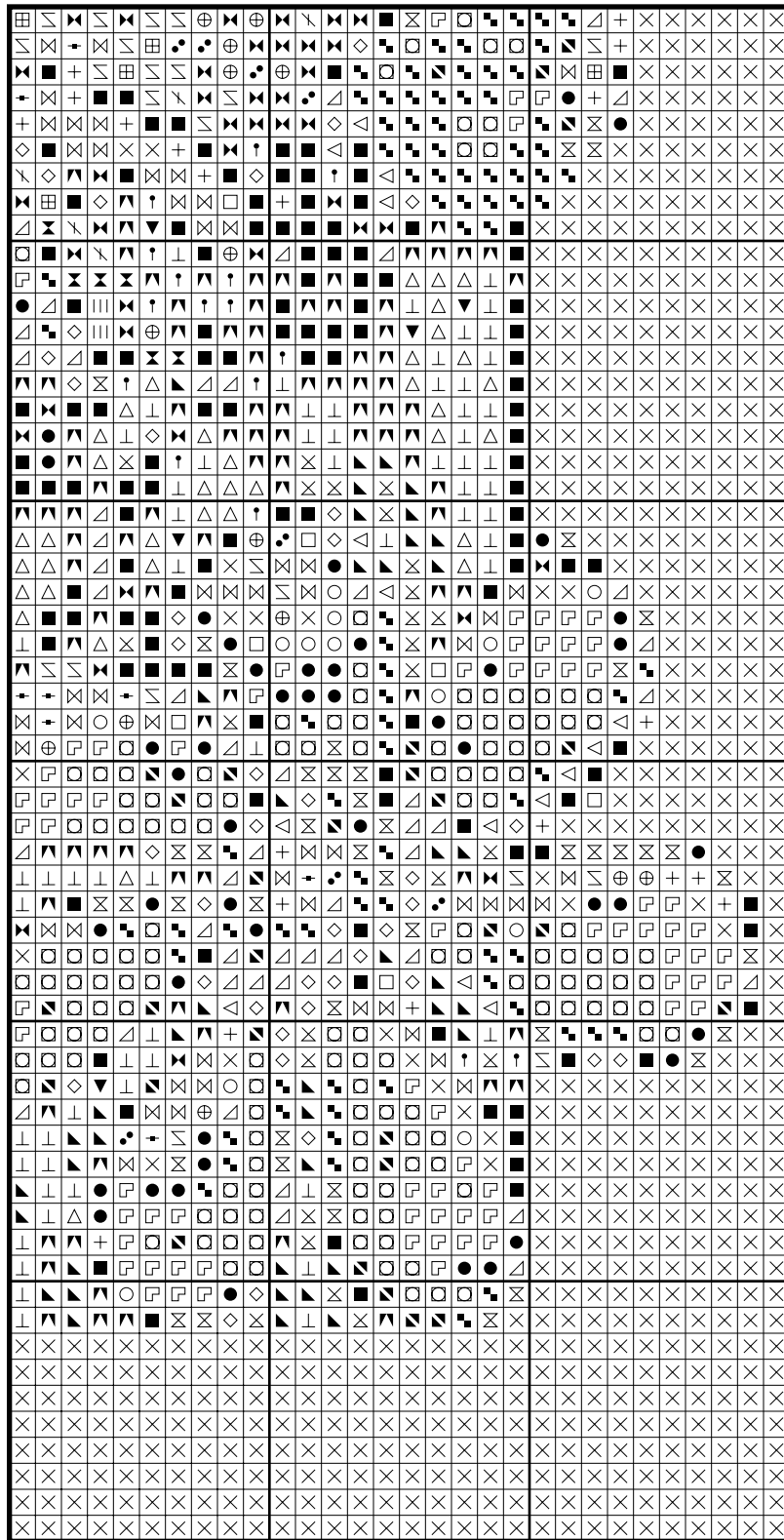
Faery by Mette Melander



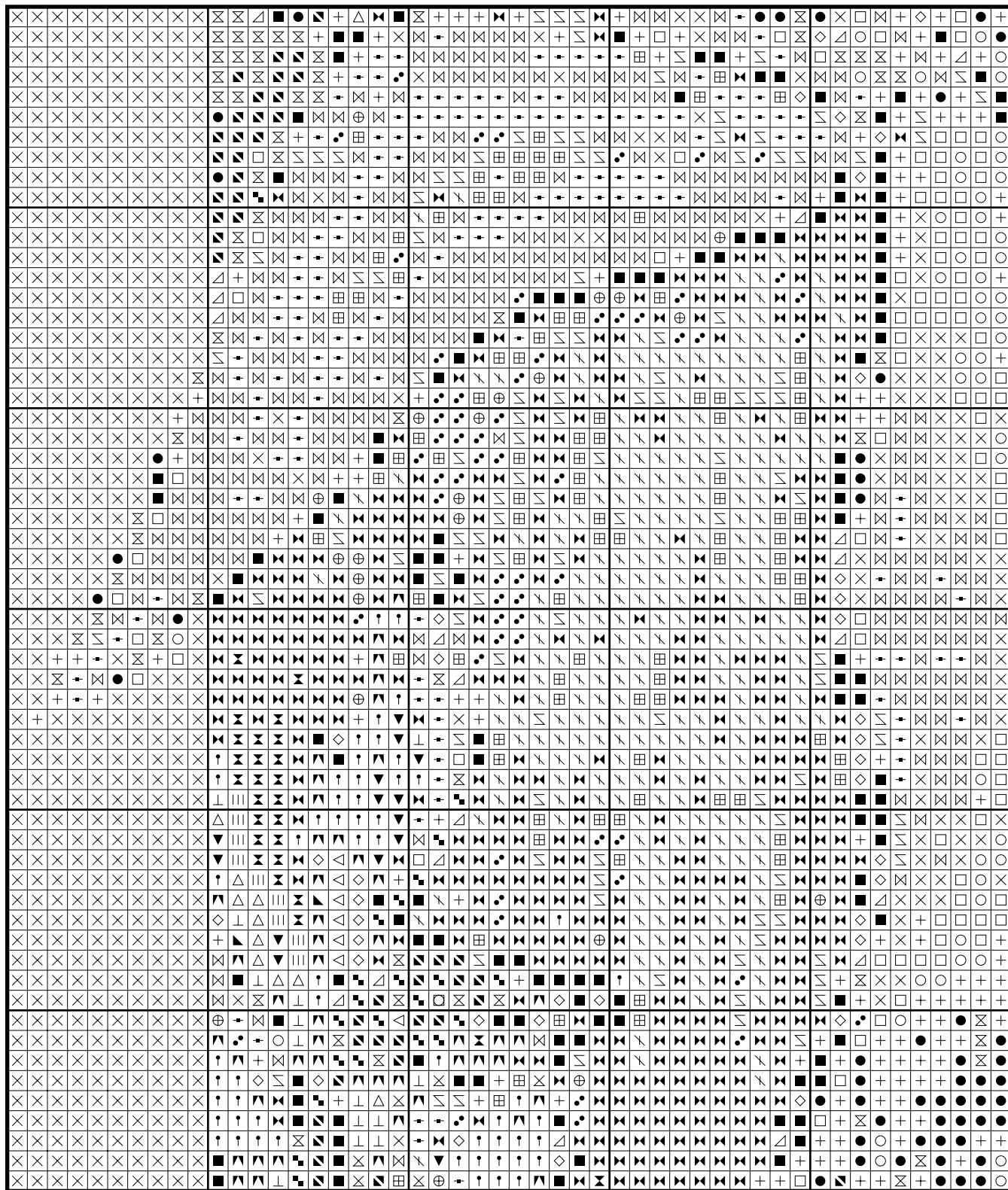
Faery by Mette Melander



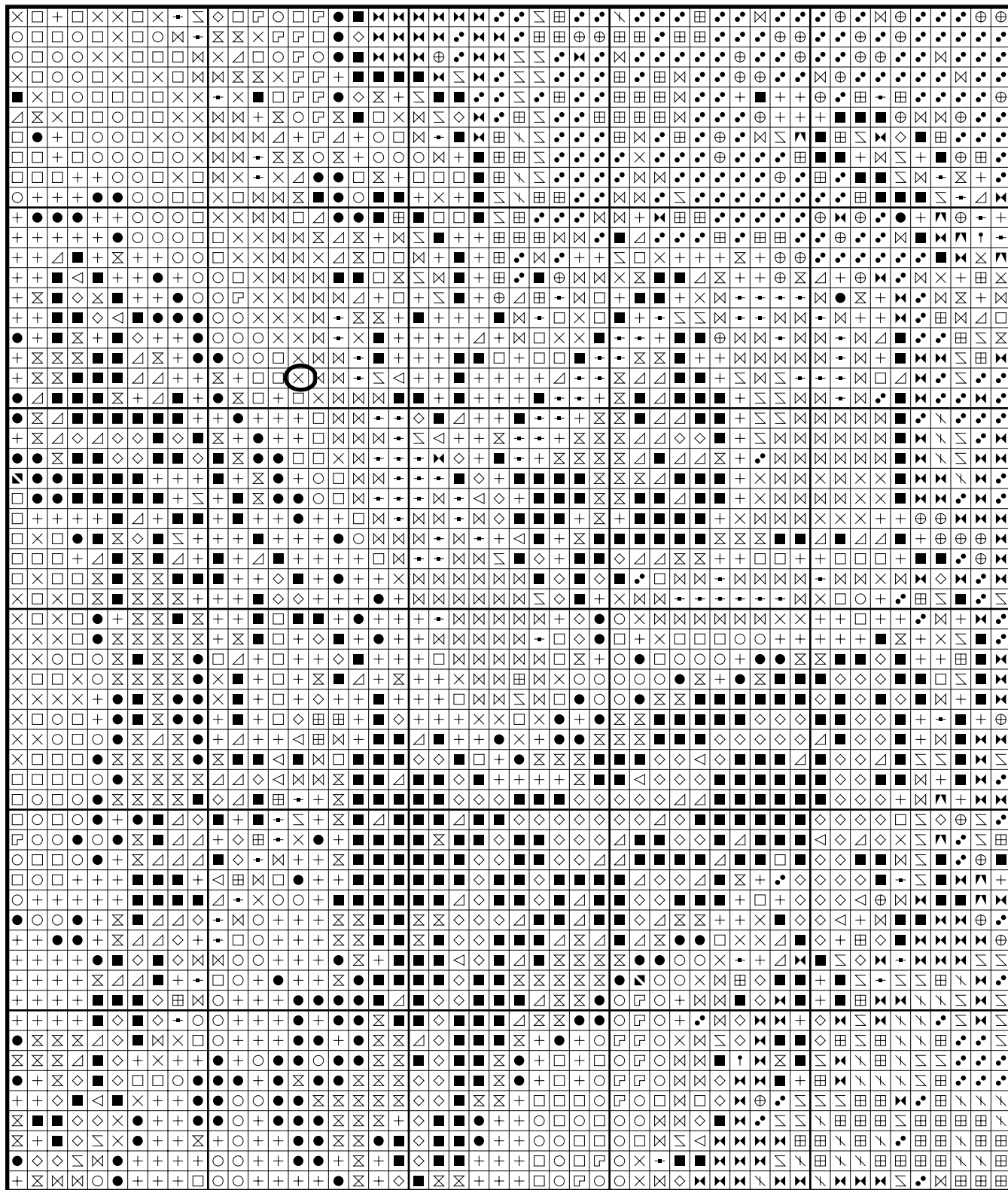
Faery by Mette Melander



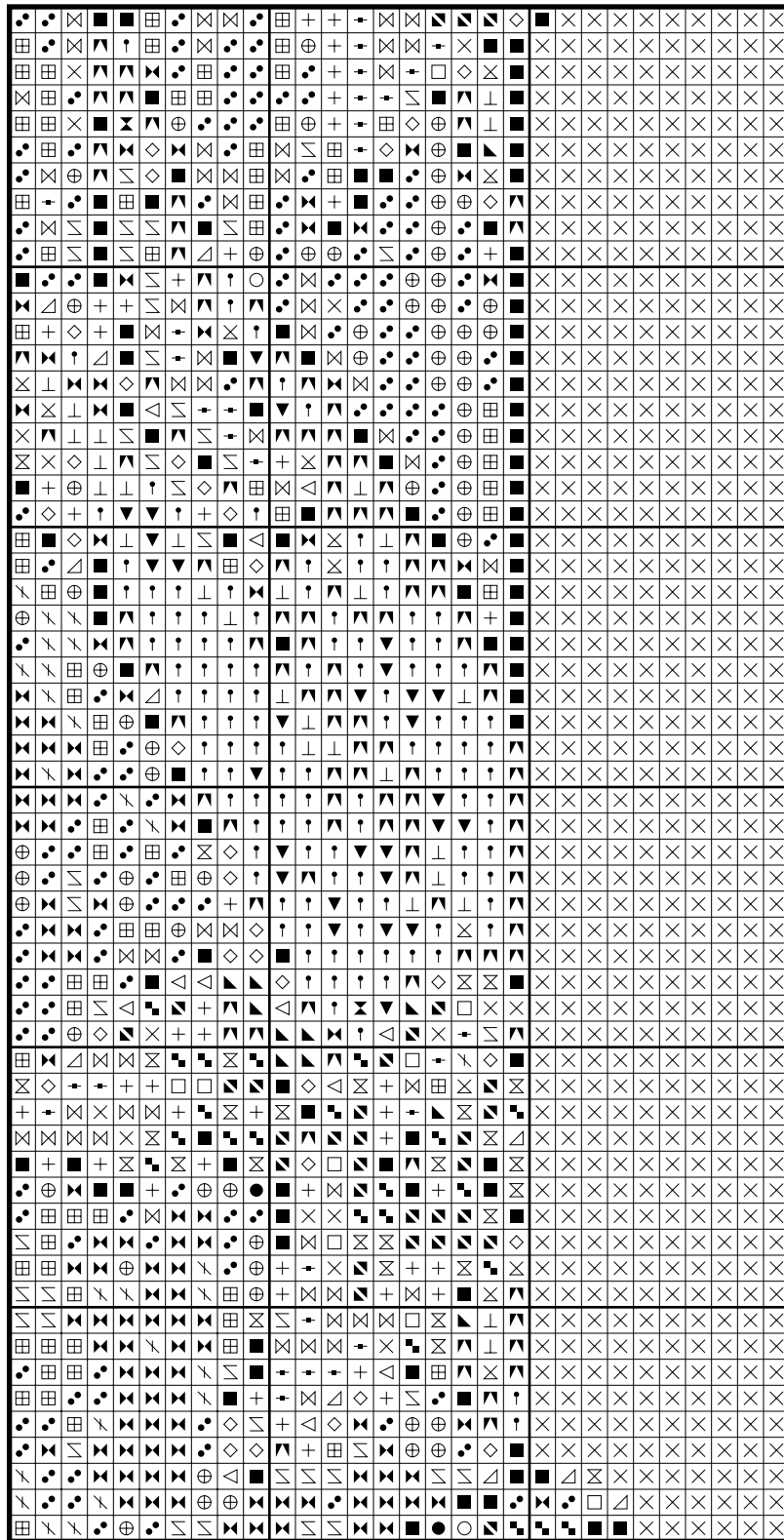
Faery by Mette Melander



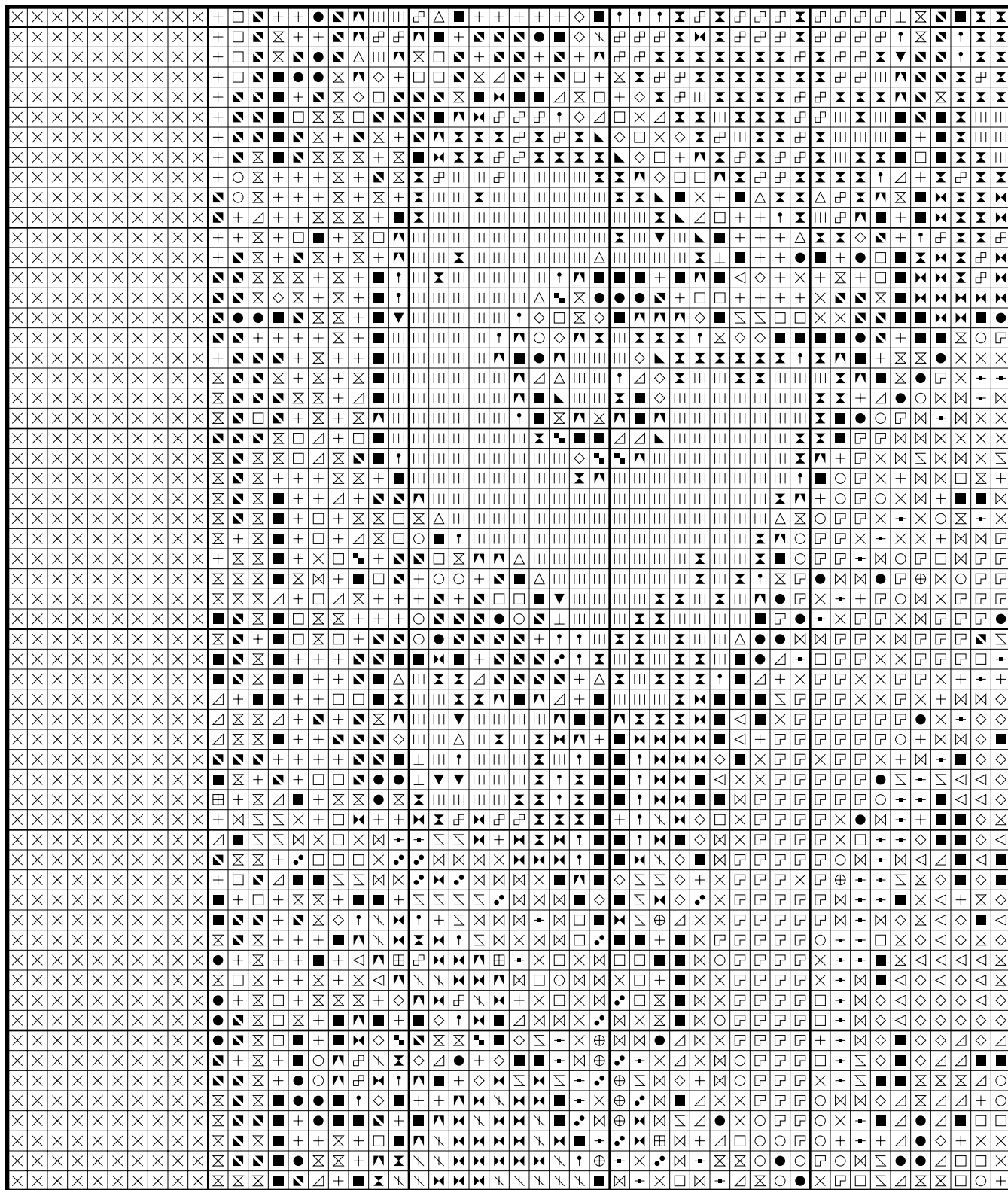
Faery by Mette Melander



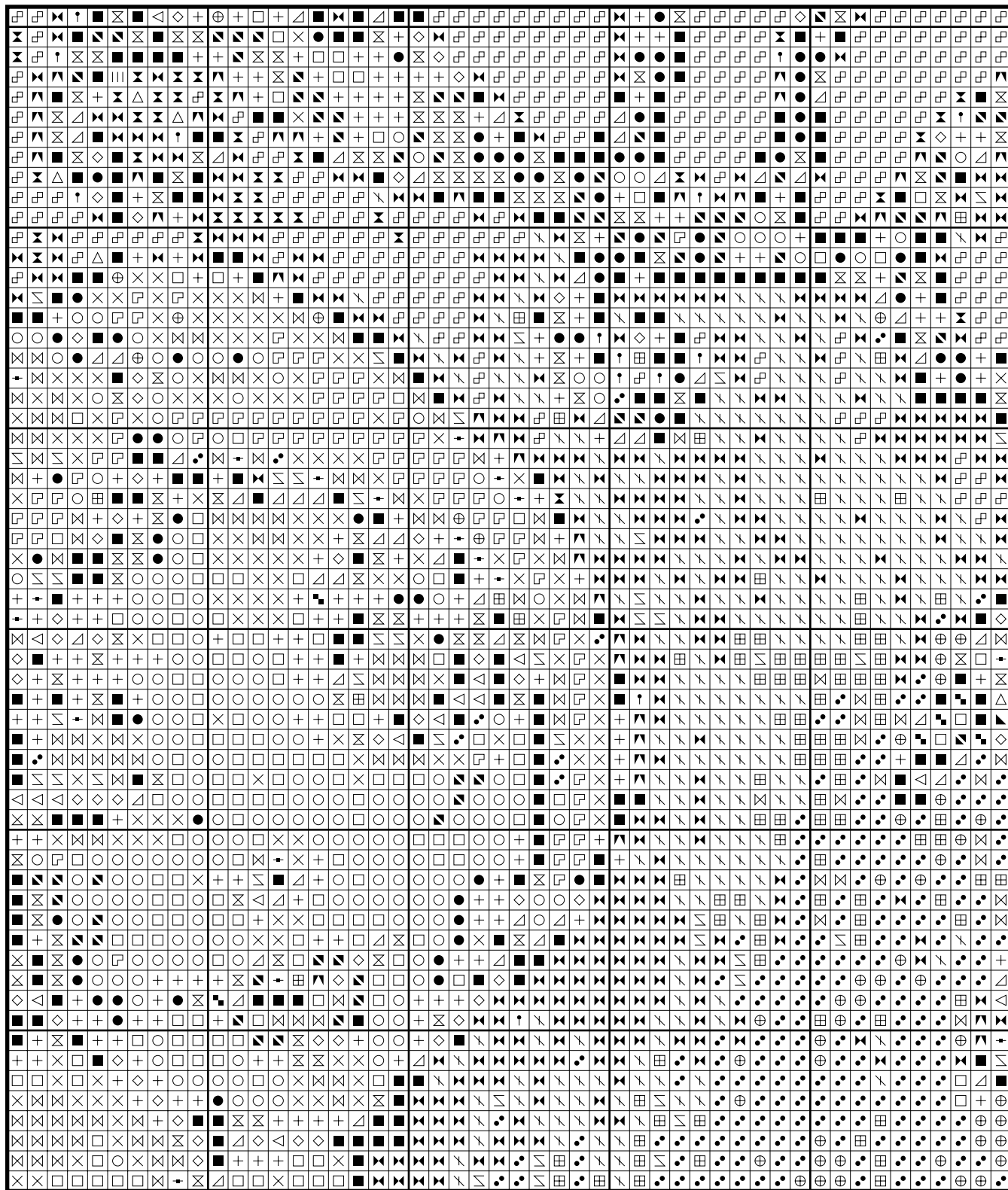
Faery by Mette Melander



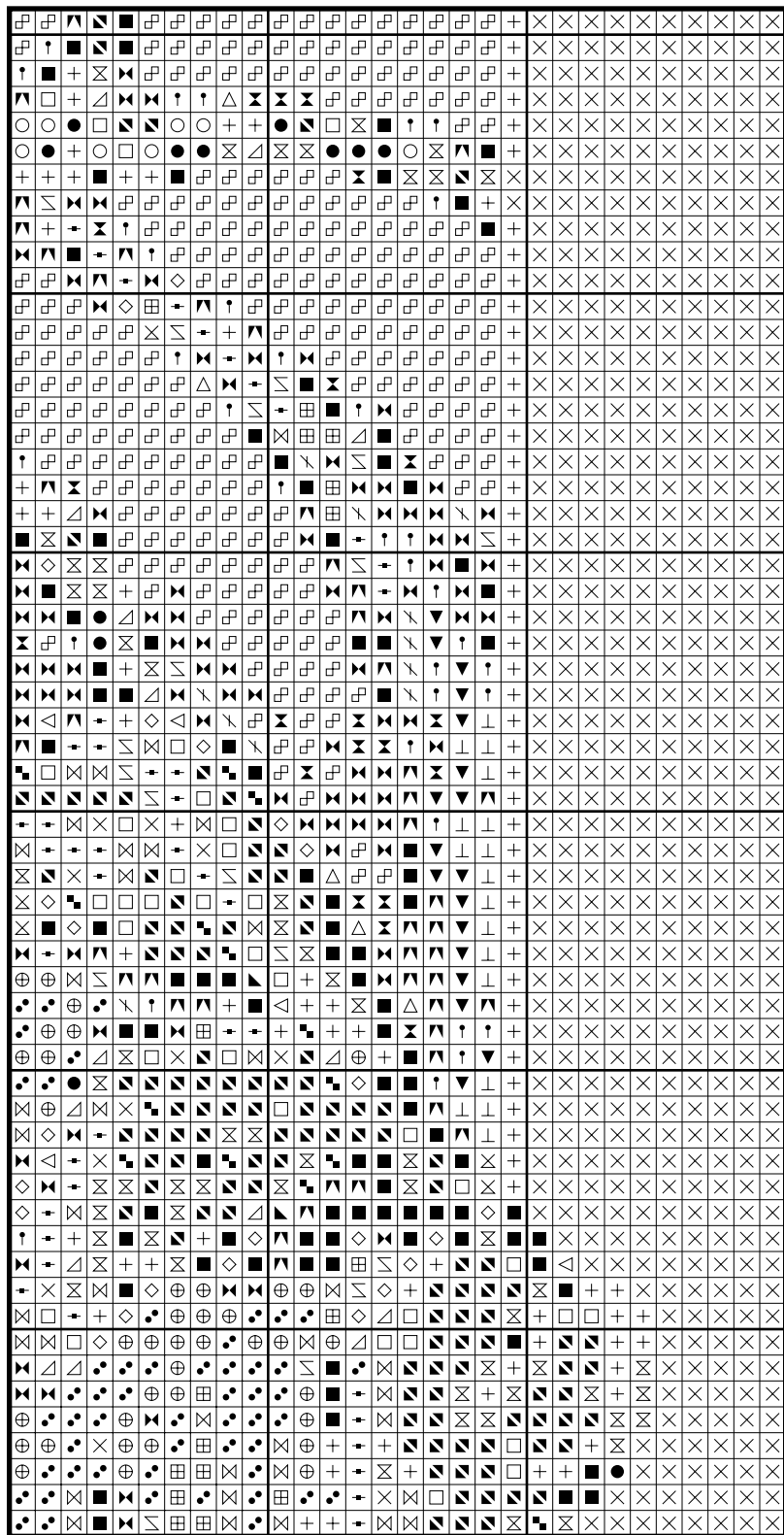
Faery by Mette Melander



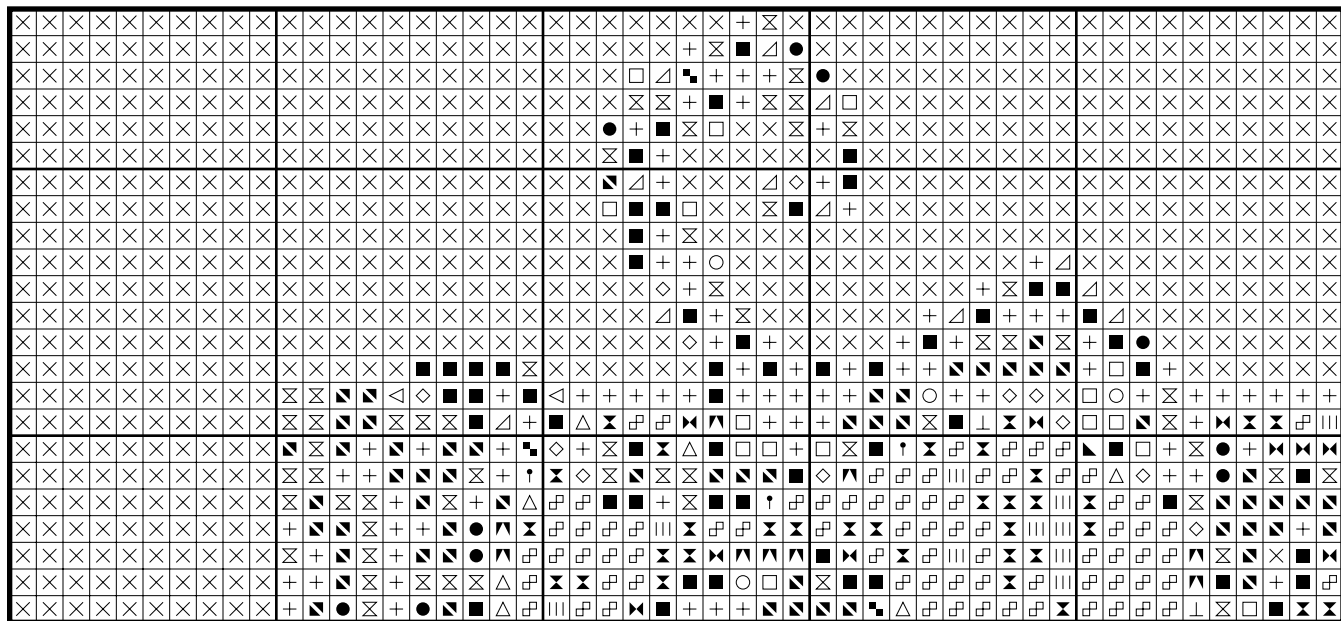
Faery by Mette Melander



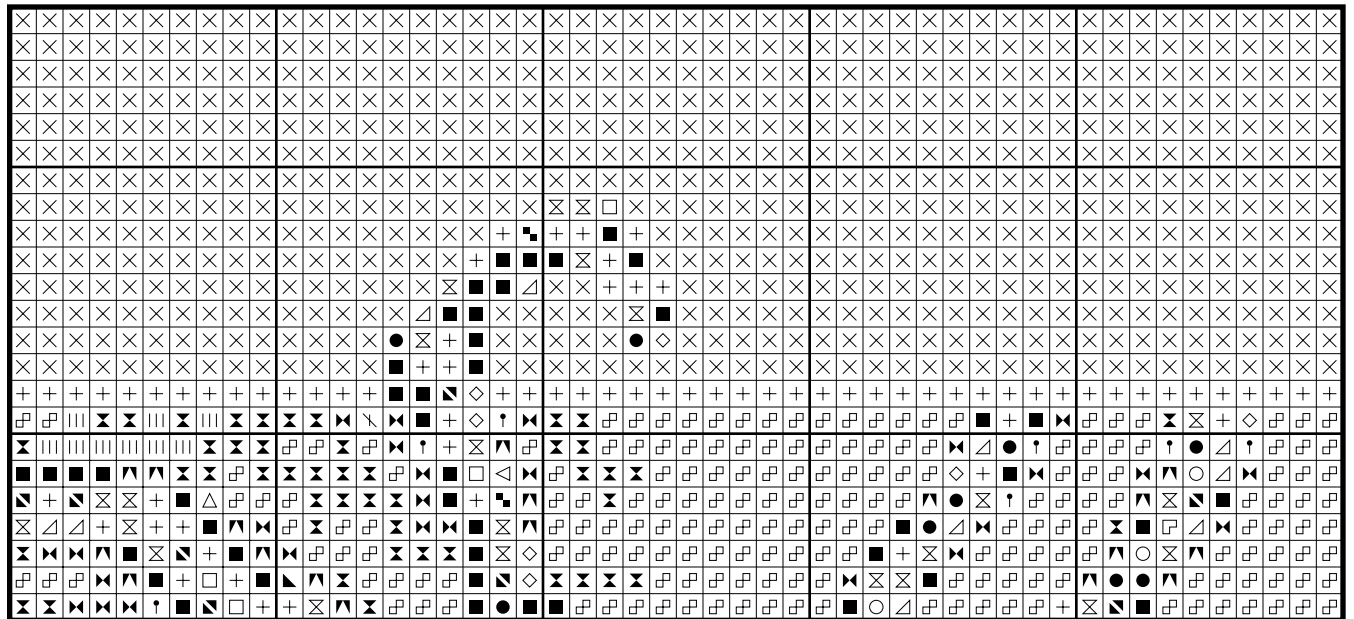
Faery by Mette Melander



Faery by Mette Melander



Faery by Mette Melander



Color distribution - faery

DMC 437 Light Tan: 6503 stitches
DMC 436 Tan: 884 stitches
DMC 783 Medium Topaz: 669 stitches
DMC 680 Dark Old Gold: 1770 stitches
DMC 610 Dark Drab Brown: 1923 stitches
DMC 869 Very Dark Hazelnut Brown: 374 stitches
DMC 782 Dark Topaz: 522 stitches
DMC 434 Light Brown: 918 stitches
DMC 3781 Dark Mocha Brown: 604 stitches
DMC 3776 Light Mahogany: 586 stitches
DMC 522 Fern Green: 2004 stitches
DMC 833 Light Golden Olive: 698 stitches
DMC 3828 Hazelnut Brown: 260 stitches
DMC 3864 Light Mocha Beige: 401 stitches
DMC 3362 Dark Pine Green: 826 stitches
DMC 562 Medium Jade: 472 stitches
DMC 322 Dark Dark Baby Blue: 369 stitches
DMC 518 Light Wedgewood: 437 stitches
DMC 791 Very Dark Cornflower Blue: 285 stitches
DMC 3856 Ultra Very Light Mahogany: 1017 stitches
DMC 3808 Ultra Very Dark Turquoise: 406 stitches
DMC 911 Medium Emerald Green: 113 stitches
DMC 500 Very Dark Blue Green: 135 stitches
DMC 400 Dark Mahogany: 224 stitches
DMC 838 Very Dark Beige Brown: 133 stitches
DMC 976 Medium Golden Brown: 372 stitches
DMC 608 Bright Orange: 155 stitches
DMC 3033 Very Light Mocha Brown: 469 stitches
DMC 842 Very Light Beige Brown: 423 stitches
DMC 341 Light Blue Violet: 1002 stitches
DMC 368 Light Pistachio Green: 653 stitches
DMC 3810 Dark Turquoise: 393 stitches

* Generally 30 stitches will use 1 metre of DMC floss.

PATTERN LAYOUT		
11	12	13
8	9	10
5	6	7
2	3	4

