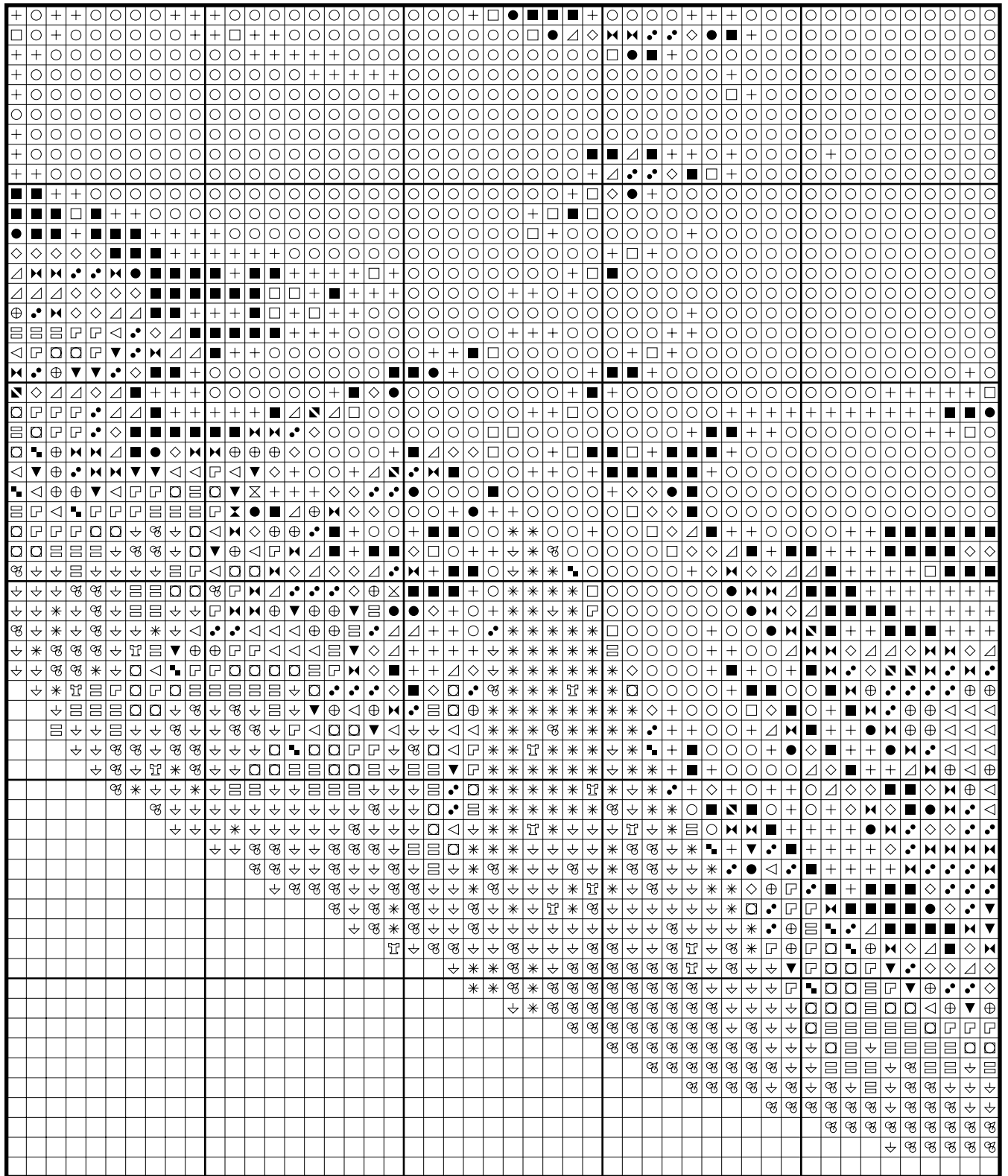


# Samantha by Sara Moon

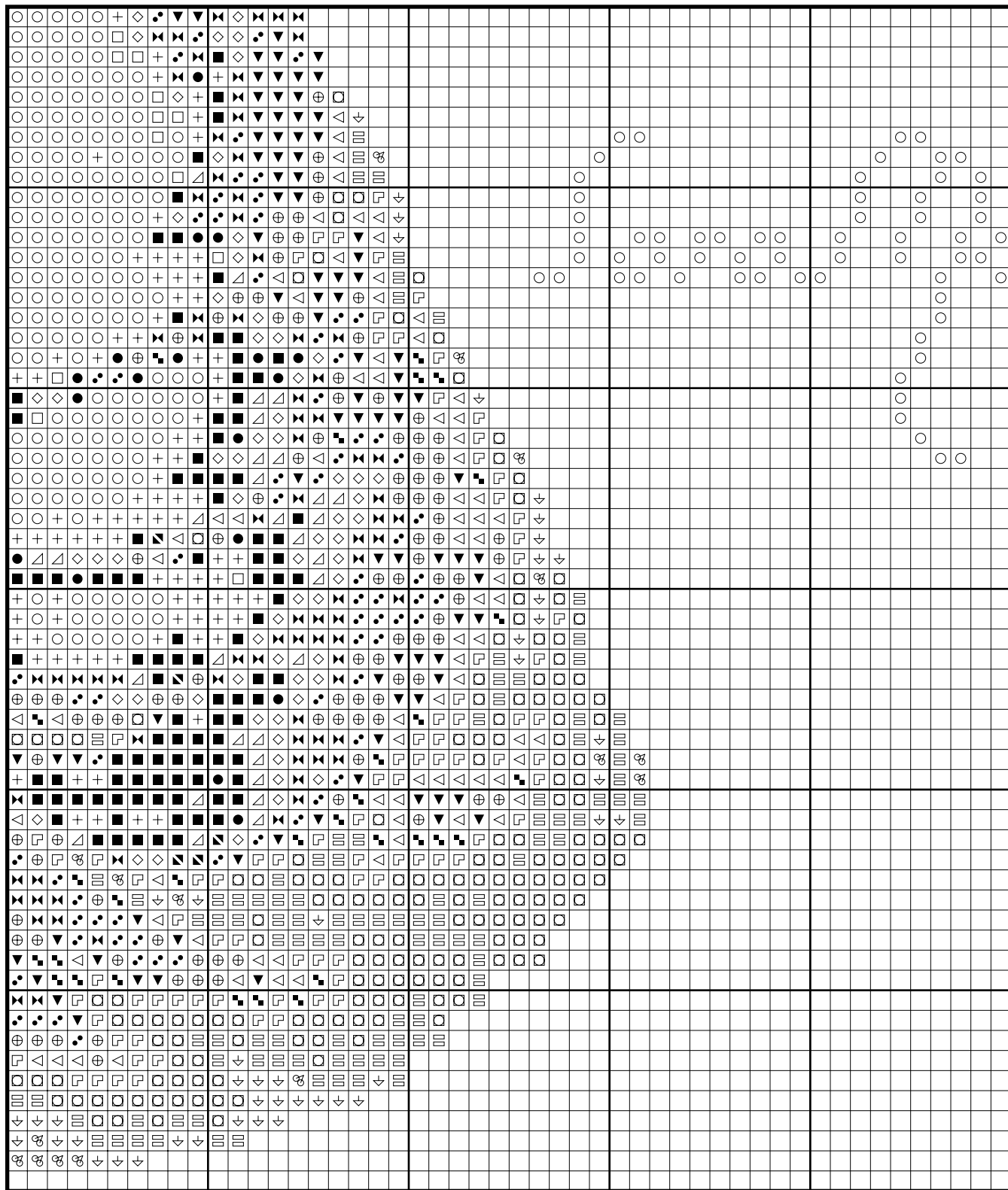
☒	DMC 838 Very Dark Beige Brown
◻	DMC 500 Very Dark Blue Green
○	DMC 310 Black
+	DMC 939 Very Dark Navy Blue
■	DMC 820 Very Dark Royal Blue
▴	DMC 336 Navy Blue
●	DMC 791 Very Dark Cornflower Blue
⊠	DMC 413 Dark Pewter Gray
◇	DMC 312 Very Dark Baby Blue
▾	DMC 3842 Dark Wedgewood
⊞	DMC 3807 Cornflower Blue
◐	DMC 798 Dark Delft Blue
⊕	DMC 334 Medium Baby Blue
◌	DMC 3802 Very Dark Antique Mauve
▴	DMC 611 Drab Brown
↑	DMC 3726 Dark Antique Mauve
△	DMC 340 Medium Blue Violet
⊠	DMC 3740 Dark Antique Violet
▾	DMC 3860 Cocoa
⊠	DMC 680 Dark Old Gold
⊥	DMC 317 Pewter Gray
▾	DMC 793 Medium Cornflower Blue
⊠	DMC 3041 Medium Antique Violet
▣	DMC 3022 Medium Brown Gray
◀	DMC 3839 Medium Lavender Blue
◻	DMC 932 Light Antique Blue
◻	DMC 809 Delft Blue
+	DMC 316 Medium Antique Mauve
⊞	DMC 209 Dark Lavender
◻	DMC 3782 Light Mocha Brown
⊞	DMC 3836 Light Grape
▯	DMC 3608 Very Light Plum
▯	DMC 452 Medium Shell Gray
⊙	DMC 604 Light Cranberry
⌒	DMC 453 Light Shell Gray
⊕	DMC 415 Pearl Gray
◻	DMC 3024 Very Light Brown Gray
⊞	DMC 827 Very Light Blue
⊞	DMC 210 Medium Lavender
⊞	DMC 211 Light Lavender
⊞	DMC 3866 Ultra Very Light Mocha Brown
*	DMC 3743 Very Light Antique Violet
••	DMC 746 Off White



# Samantha by Sara Moon

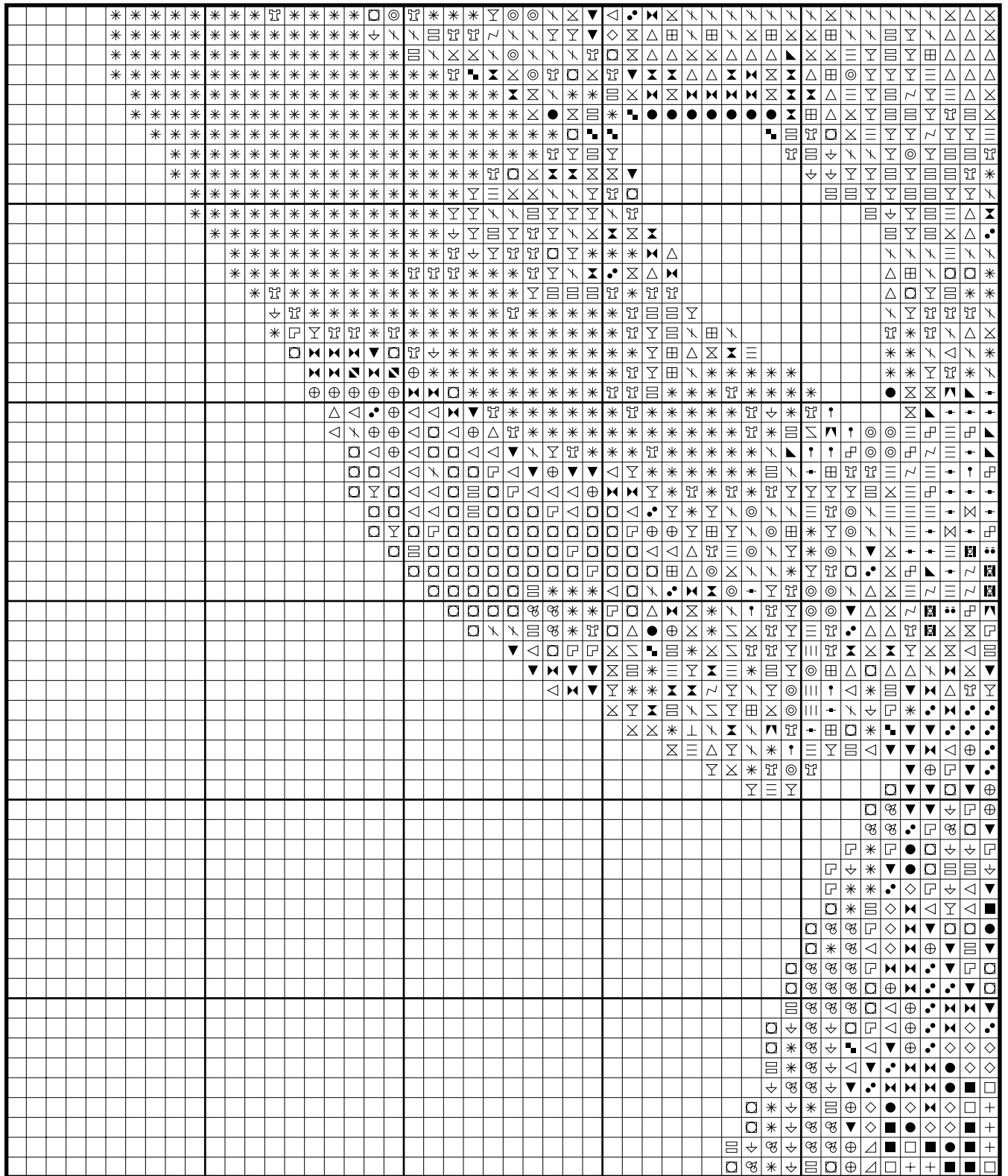


# Samantha by Sara Moon

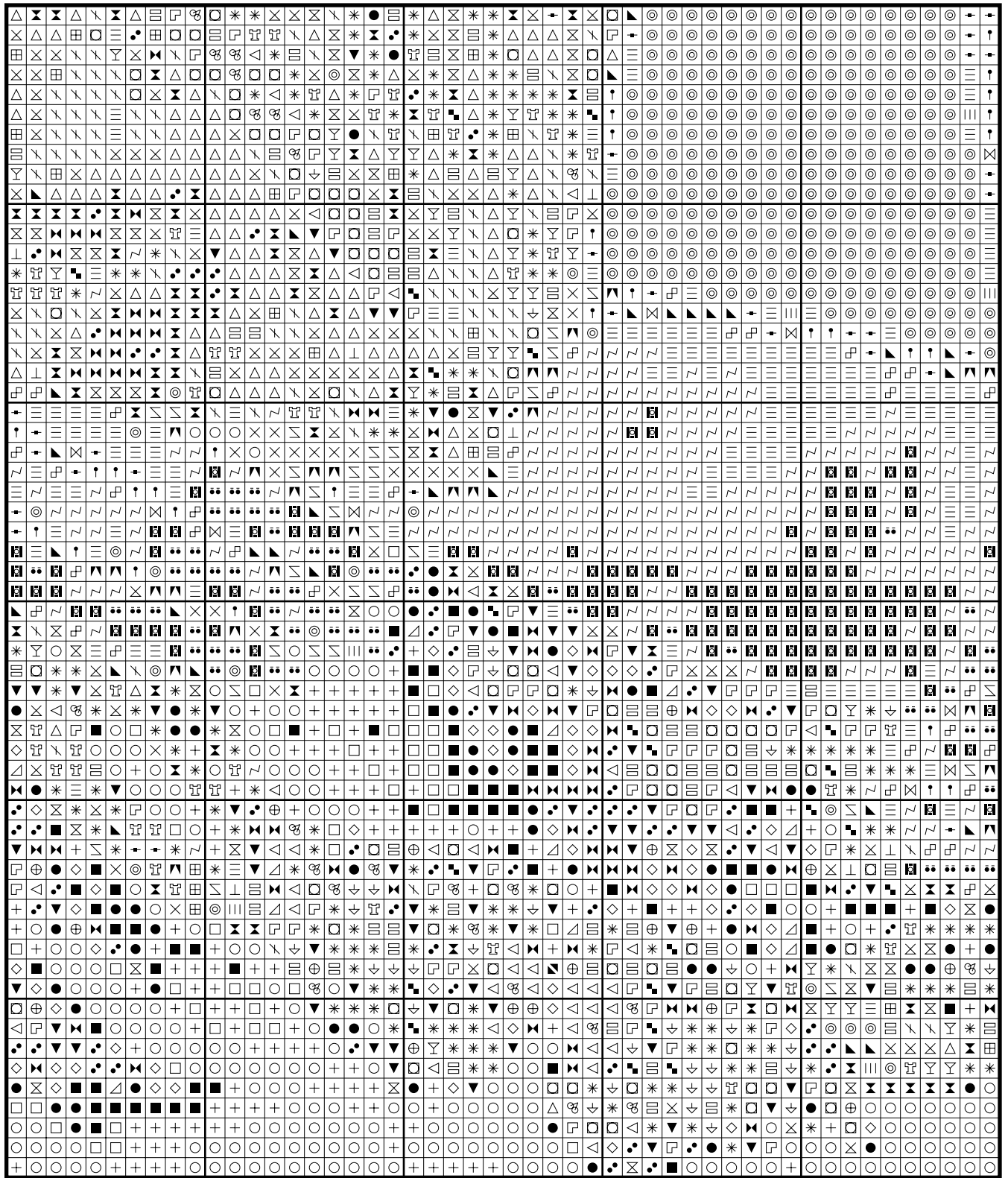




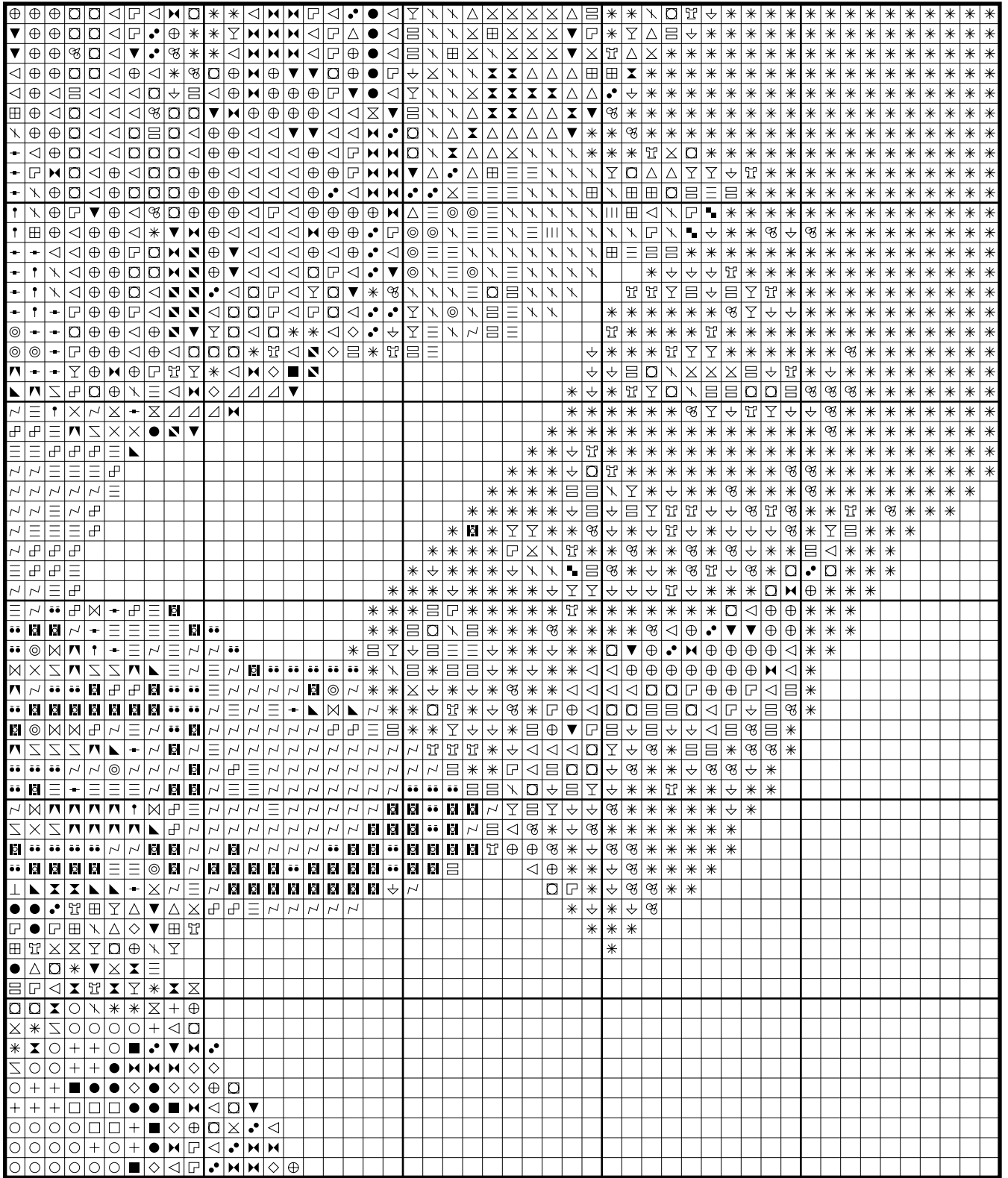
# Samantha by Sara Moon



# Samantha by Sara Moon

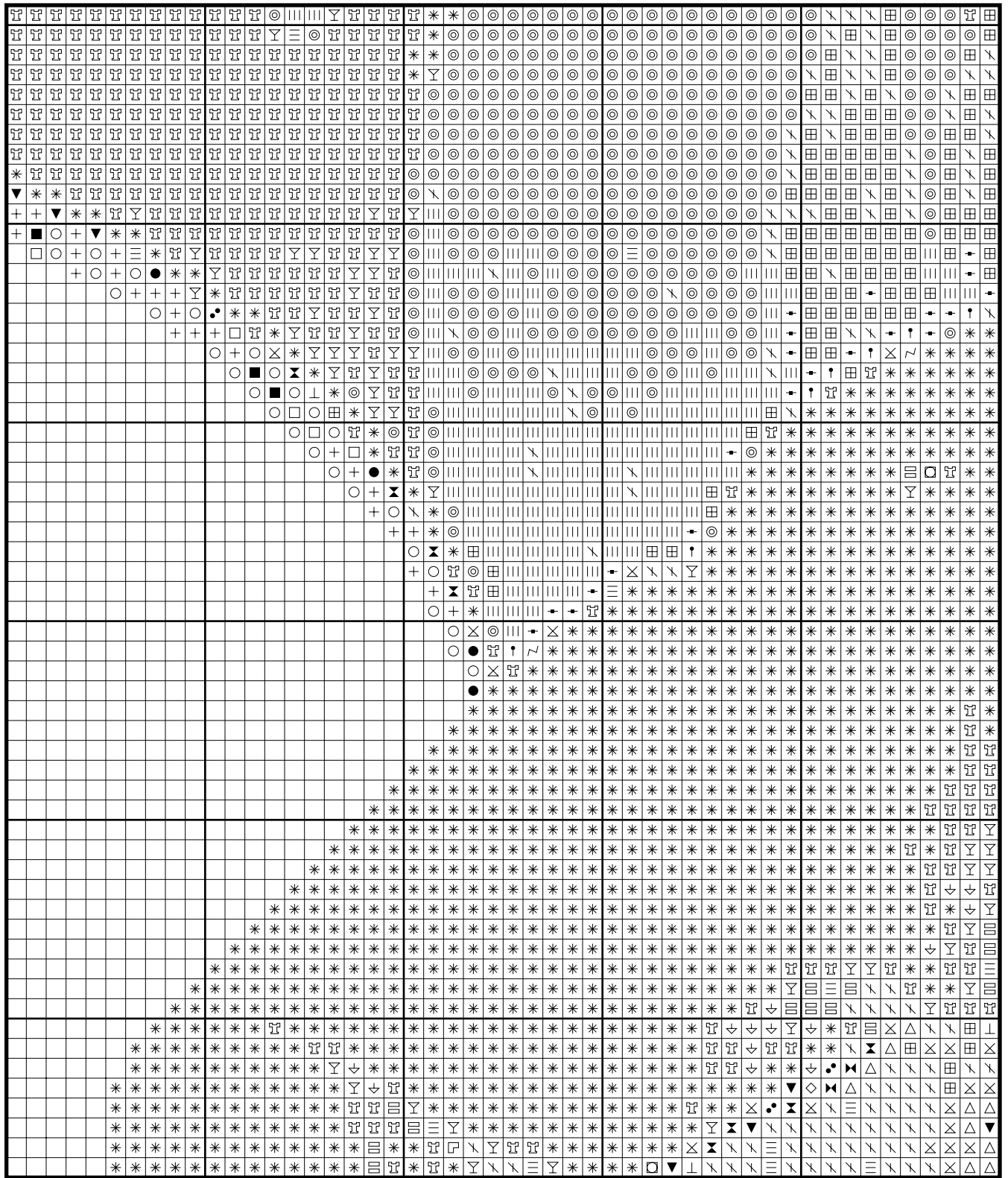


# Samantha by Sara Moon

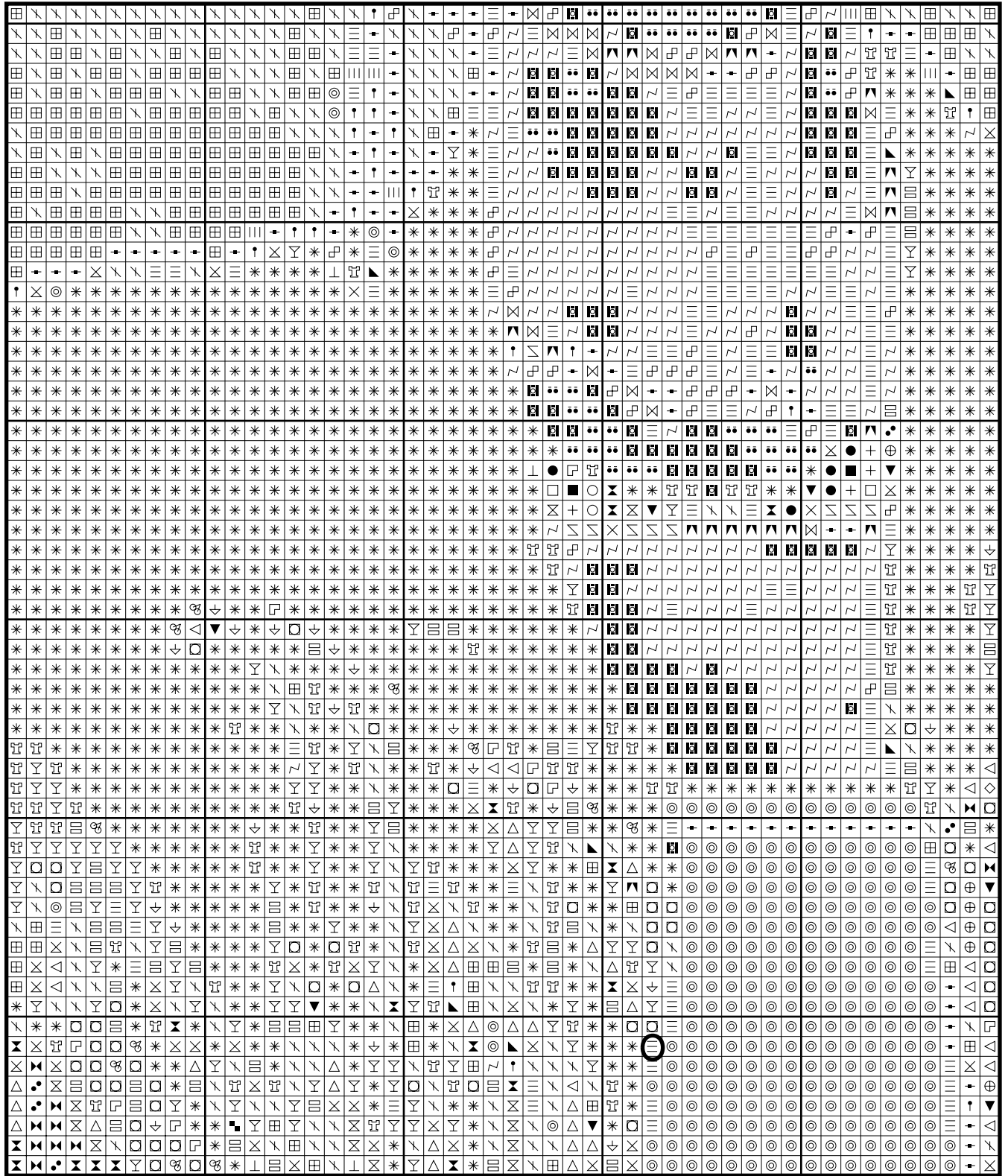




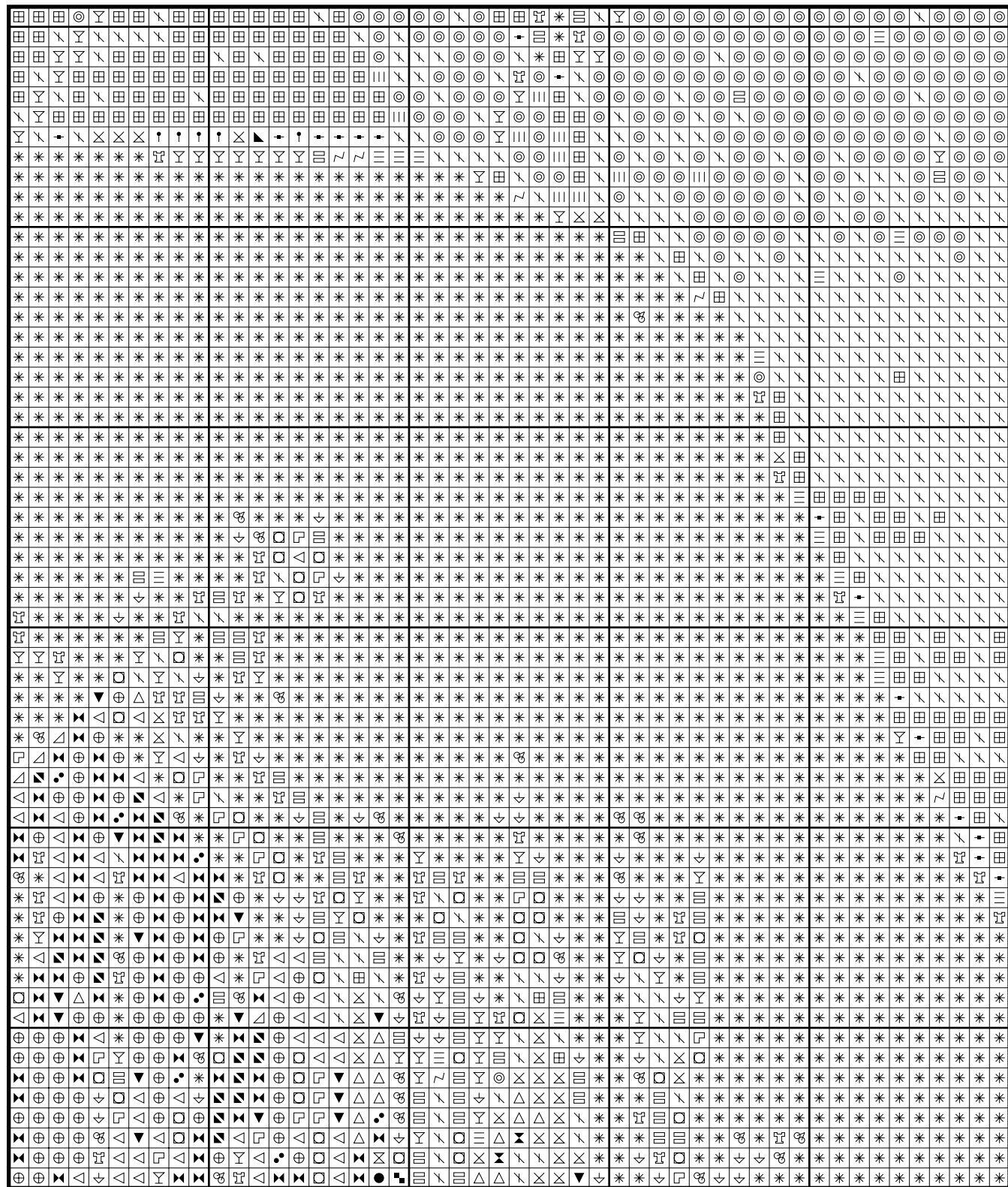
# Samantha by Sara Moon



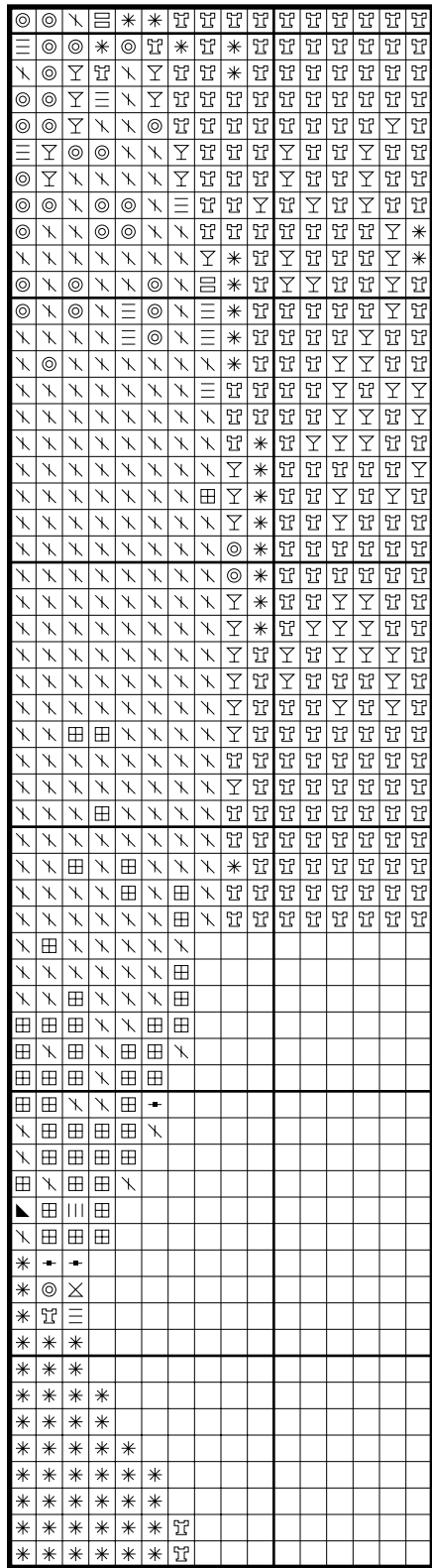
# Samantha by Sara Moon



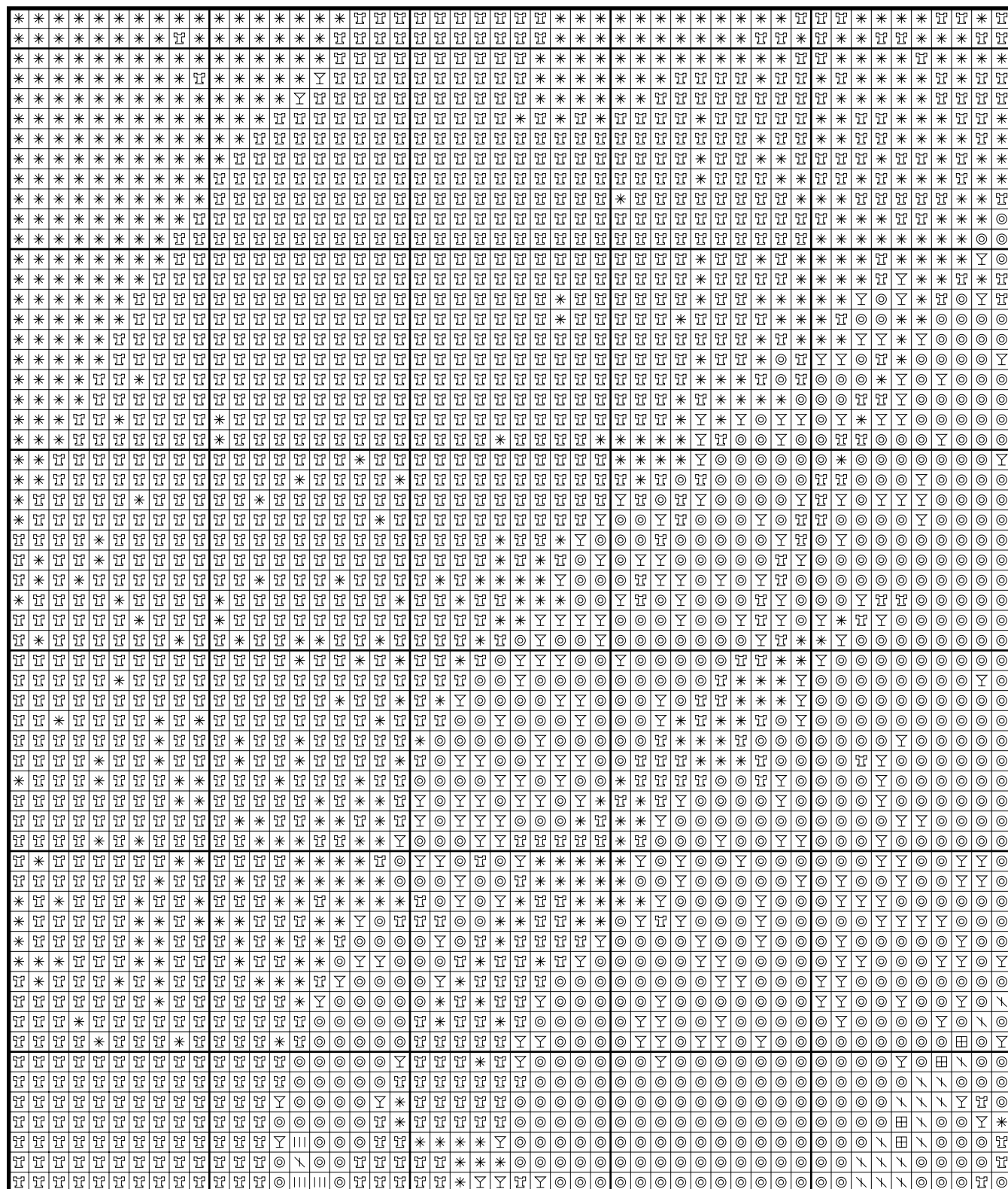
# Samantha by Sara Moon



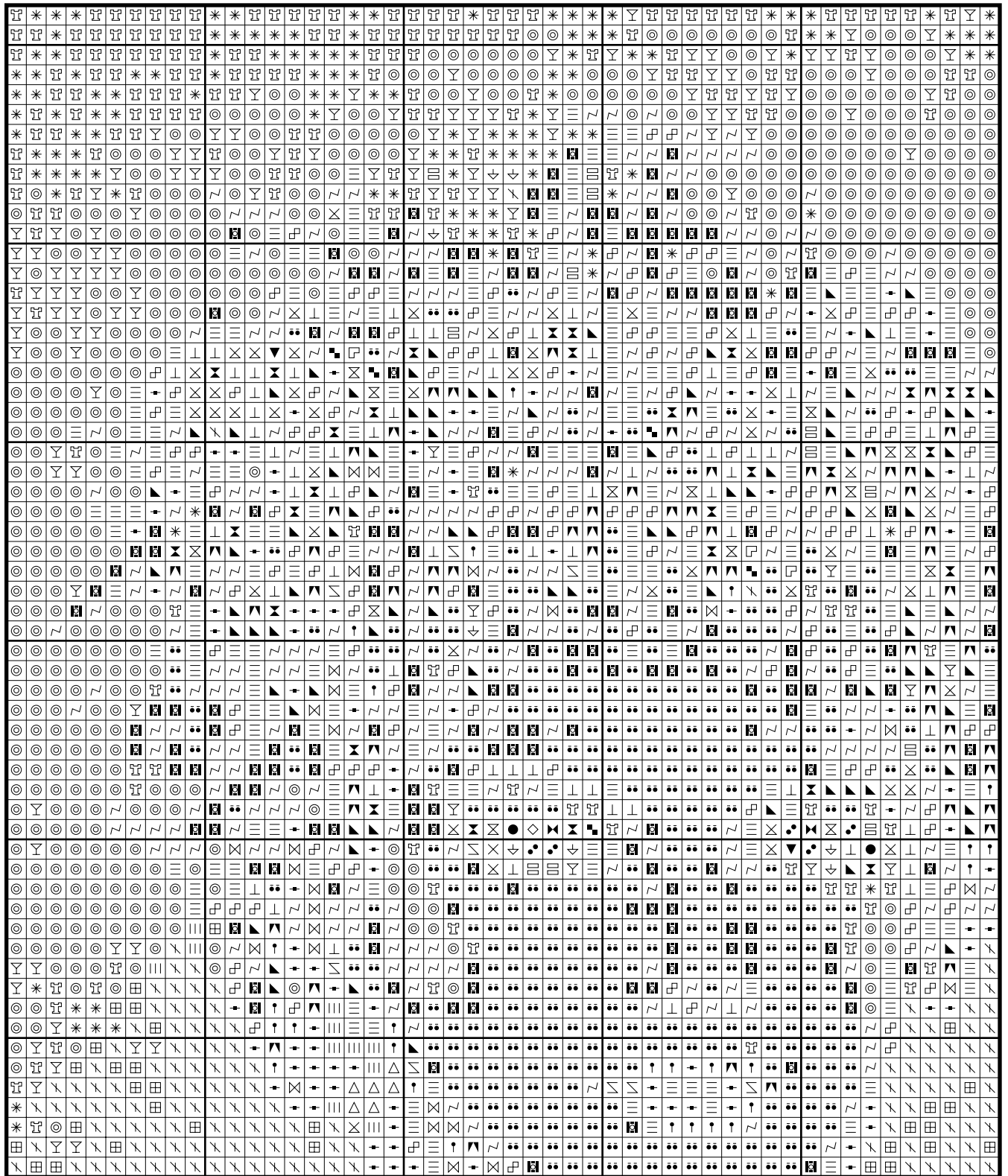
# Samantha by Sara Moon



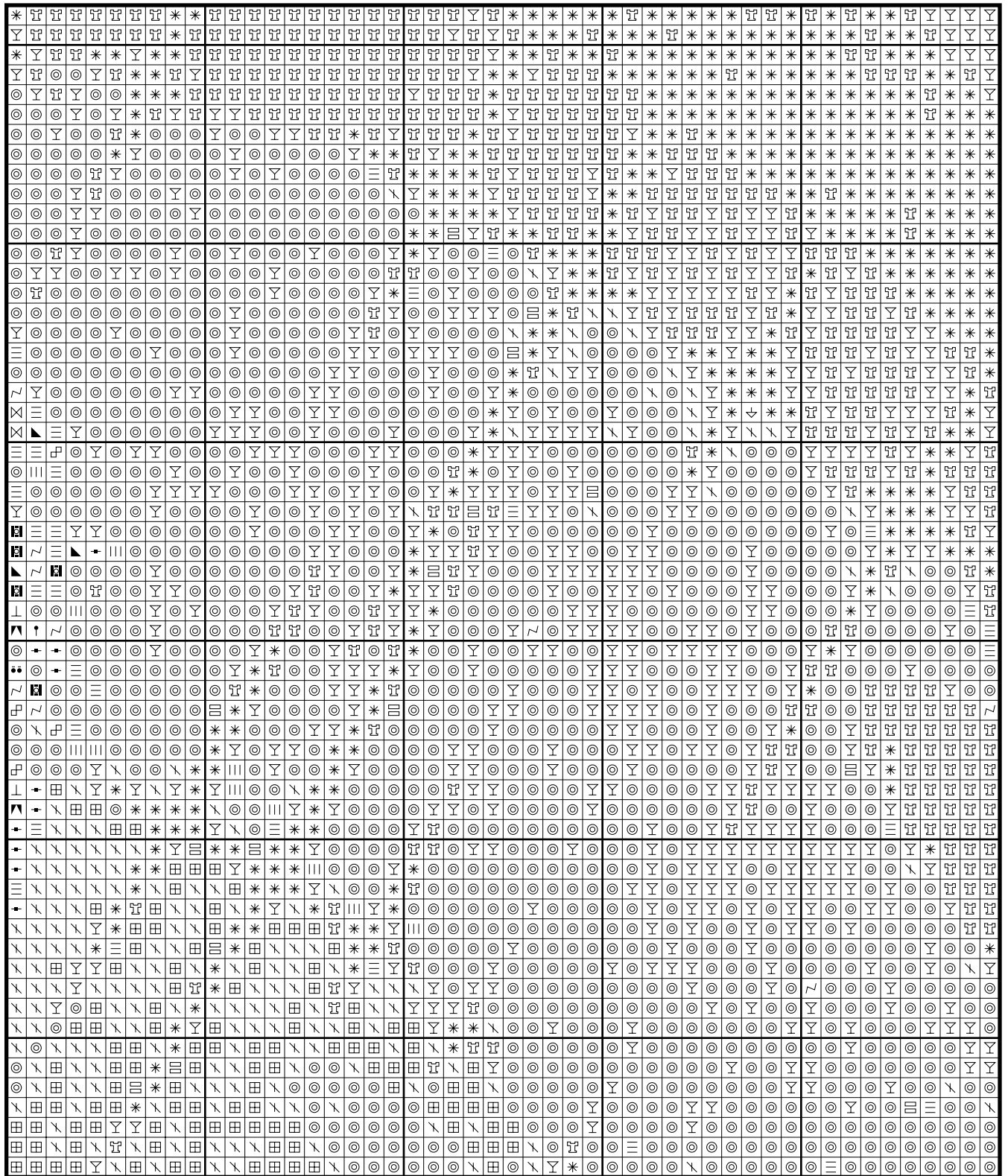
# Samantha by Sara Moon



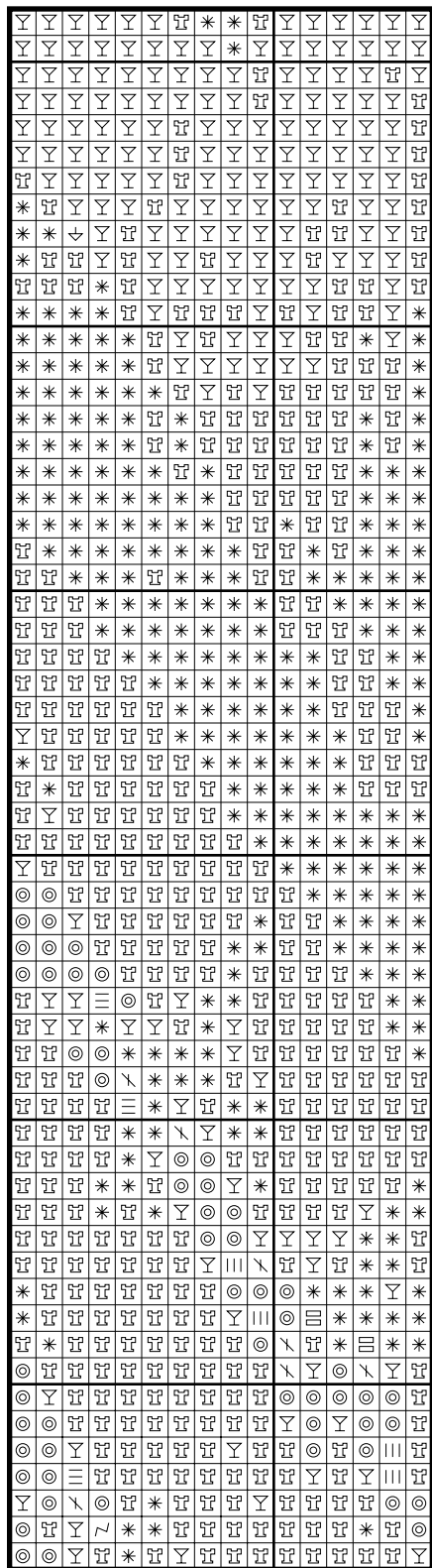
# Samantha by Sara Moon



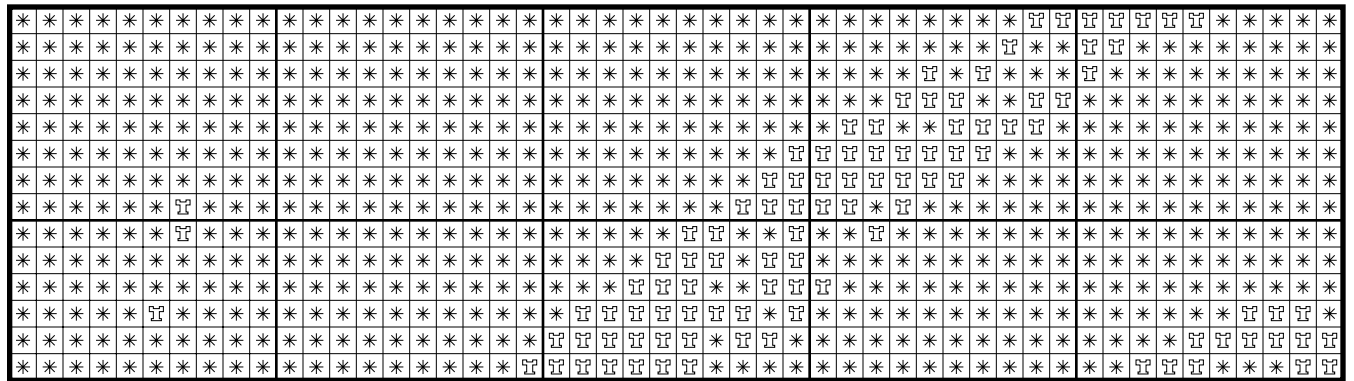
# Samantha by Sara Moon



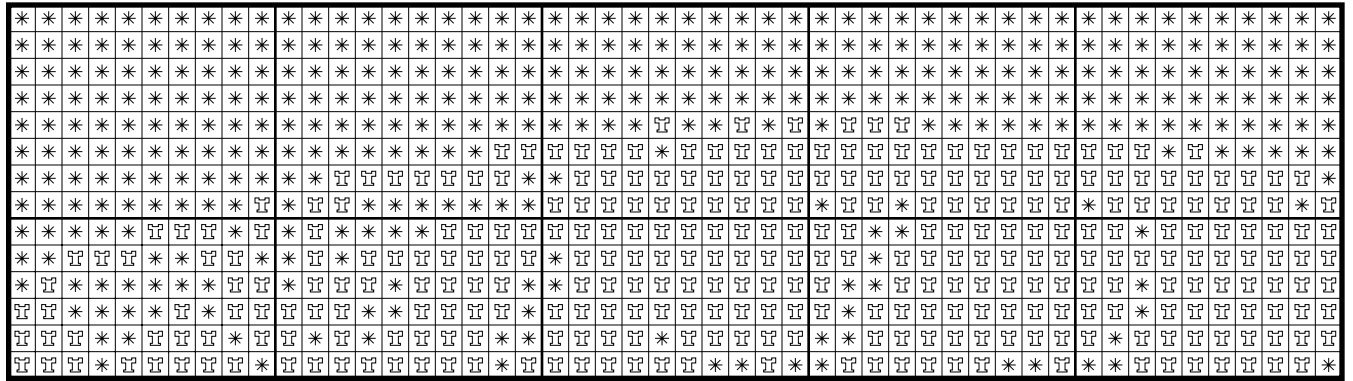
# Samantha by Sara Moon



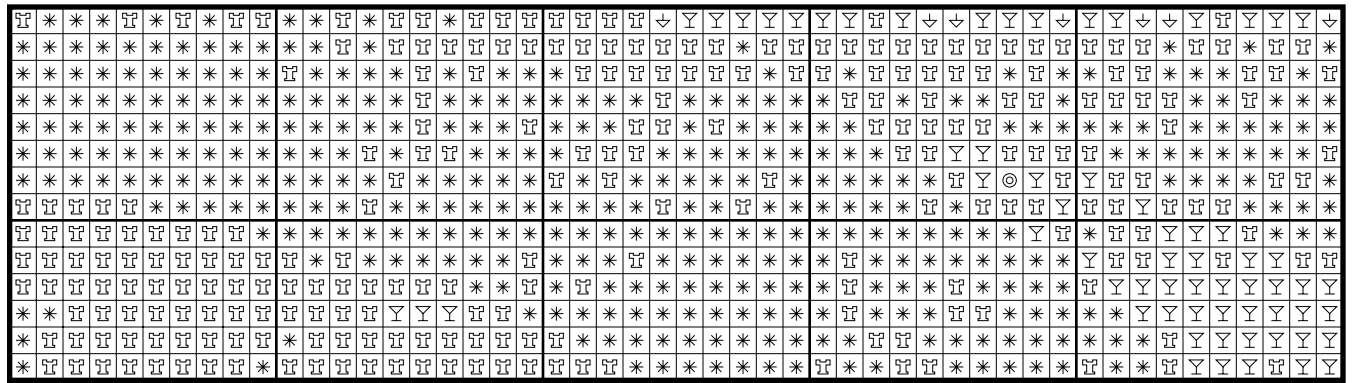
# Samantha by Sara Moon



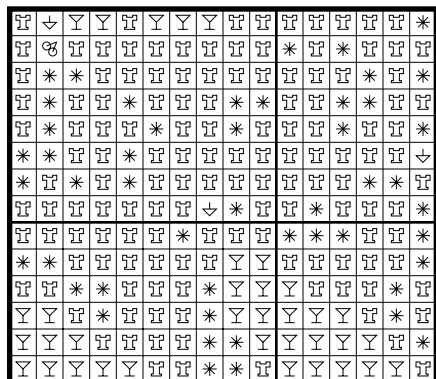
# Samantha by Sara Moon



# Samantha by Sara Moon



# Samantha by Sara Moon



\* To work out the size of the finished article, take the number of stitches and divide it by the count of your fabric (e.g 14,16,18 count aida etc) to get the size in inches. Times it by 2.5 to get centimetres.

\* PLEASE NOTE: Our patterns are printed in a grid showing 10 x 10 stitches in each box. You may notice that the pages that run vertical have a maximum number of 9 rows at the top or bottom of a page. You are not missing a row or rows of stitches, this is the way our patterns print. It allows us to have larger print for your symbols.

\* You should begin at the centre of the pattern which has been marked by a circle for you. To find the centre of the pattern it is just a matter of counting the vertical and horizontal stitches and divide them by half. Where the two points meet that is the centre.

\* Pattern is for personal use only and is not to be sold,copied or redistributed in any form.Copyright of Artecy Cross Stitch.

\* 166 stitches wide by 250 stitches high, 43 colours used

Color distribution - samantha

DMC 838 Very Dark Beige Brown: 33 stitches  
 DMC 500 Very Dark Blue Green: 124 stitches  
 DMC 310 Black: 1456 stitches  
 DMC 939 Very Dark Navy Blue: 521 stitches  
 DMC 820 Very Dark Royal Blue: 362 stitches  
 DMC 336 Navy Blue: 105 stitches  
 DMC 791 Very Dark Cornflower Blue: 161 stitches  
 DMC 413 Dark Pewter Gray: 109 stitches  
 DMC 312 Very Dark Baby Blue: 263 stitches  
 DMC 3842 Dark Wedgewood: 43 stitches  
 DMC 3807 Cornflower Blue: 395 stitches  
 DMC 798 Dark Delft Blue: 300 stitches  
 DMC 334 Medium Baby Blue: 387 stitches  
 DMC 3802 Very Dark Antique Mauve: 64 stitches  
 DMC 611 Drab Brown: 131 stitches  
 DMC 3726 Dark Antique Mauve: 108 stitches  
 DMC 340 Medium Blue Violet: 242 stitches  
 DMC 3740 Dark Antique Violet: 178 stitches  
 DMC 3860 Cocoa: 148 stitches  
 DMC 680 Dark Old Gold: 70 stitches  
 DMC 317 Pewter Gray: 88 stitches  
 DMC 793 Medium Cornflower Blue: 320 stitches  
 DMC 3041 Medium Antique Violet: 323 stitches  
 DMC 3022 Medium Brown Gray: 83 stitches  
 DMC 3839 Medium Lavender Blue: 404 stitches  
 DMC 932 Light Antique Blue: 307 stitches  
 DMC 809 Delft Blue: 650 stitches  
 DMC 316 Medium Antique Mauve: 306 stitches  
 DMC 209 Dark Lavender: 680 stitches  
 DMC 3782 Light Mocha Brown: 268 stitches  
 DMC 3836 Light Grape: 1489 stitches  
 DMC 3608 Very Light Plum: 228 stitches  
 DMC 452 Medium Shell Gray: 702 stitches  
 DMC 604 Light Cranberry: 3679 stitches  
 DMC 453 Light Shell Gray: 934 stitches  
 DMC 415 Pearl Gray: 568 stitches  
 DMC 3024 Very Light Brown Gray: 557 stitches  
 DMC 827 Very Light Blue: 379 stitches  
 DMC 210 Medium Lavender: 1616 stitches  
 DMC 211 Light Lavender: 4063 stitches  
 DMC 3866 Ultra Very Light Mocha Brown: 565 stitches  
 DMC 3743 Very Light Antique Violet: 7870 stitches  
 DMC 746 Off White: 560 stitches

\* Generally 30 stitches will use 1 metre of DMC floss.

PATTERN LAYOUT			
18	19	20	21
14	15	16	17
10	11	12	13
6	7	8	9
2	3	4	5



Lara Lynn