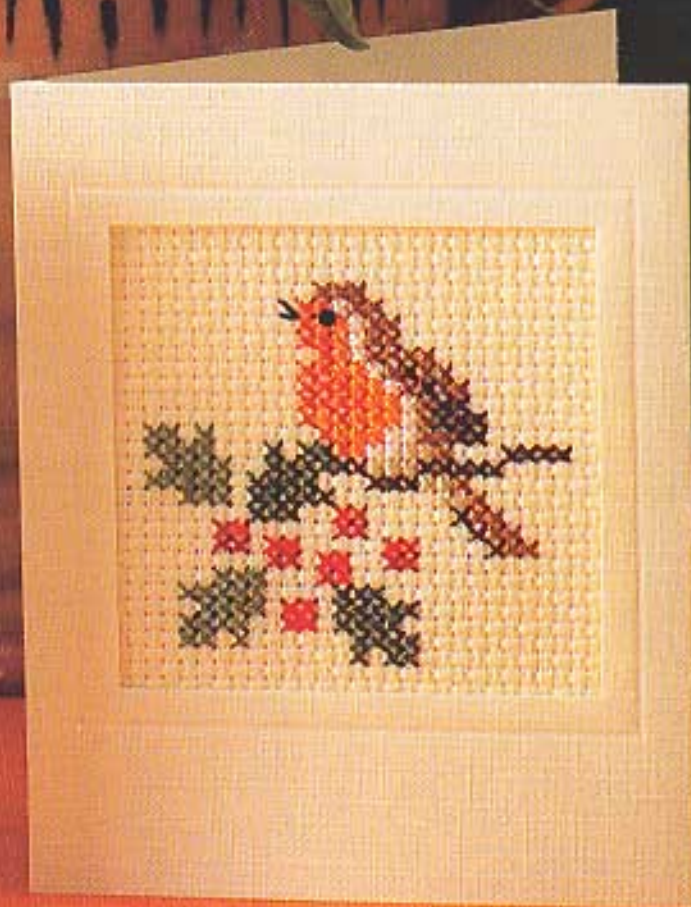





Garden Birds

These cards, each featuring a miniature study of a favourite garden visitor, may be used to say many things: the goldfinch for good luck, perhaps, or the robin for Christmas greetings; whatever the occasion, the recipient will feel special





GARDEN BIRDS

YOU WILL NEED

For each card, with a square aperture measuring 6.8cm (2 $\frac{3}{8}$ in) each way:

12.5cm (5in) square of cream, 11-count Aida fabric
Stranded embroidery cotton in the colours given in the appropriate panel
No.24 tapestry needle
Card, as specified above (for suppliers, see page 254)

NOTE: One skein of each colour on the combined list is sufficient for all five designs. The fabric quantity quoted above includes an allowance of 6.5cm (2 $\frac{1}{2}$ in) each way, for framing; if you are making more than one card, allow a 10cm (4in) square for each, plus a 5cm (2in) margin around the total area.

THE EMBROIDERY

Find the centre by folding the fabric in half and then in half again, and lightly pressing the folded corner, or by marking the horizontal and vertical centre lines with basting stitches in a light-coloured thread (see *Basic Skills* pages 8–11). If you are stitching several designs at once, separate the card areas (10cm/4in square) with basting stitches, and mark the centre of each area and separate when you have finished the embroidery. Mount in a hoop or frame.

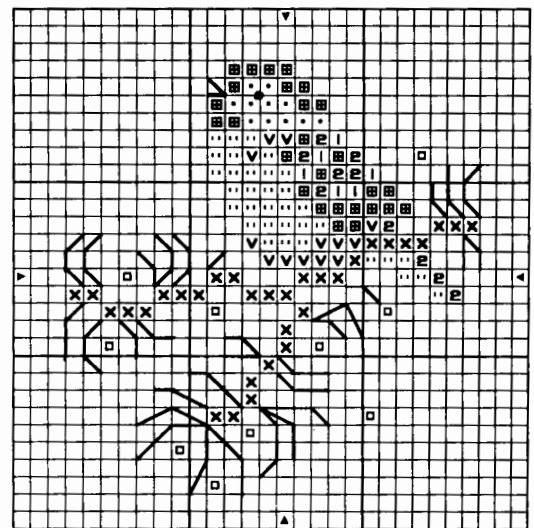
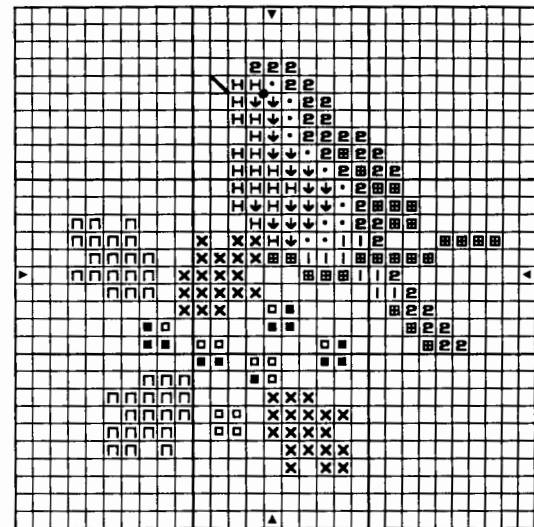
Complete all cross stitching, using two strands of thread in the needle. Do not take dark threads across the back of the work in such a way that they show on the right side. Complete the backstitching using two strands of thread. Stitch each bird's eye, indicated by a black dot on the chart, with a French knot.

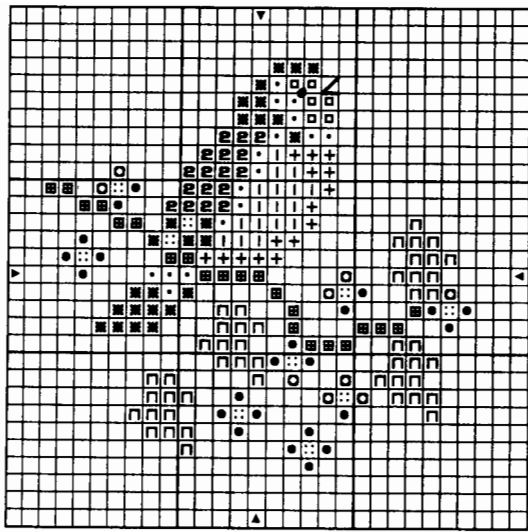
▶ TREE SPARROW	ANCHOR	DMC	MADEIRA
◻	White	1	White
◼	Black*	403	Black
▣	Dark brown	360	898
▤	Light brown	310	780
▥	Light beige	852	3033
▦	Light grey	398	415
▧	Medium grey	399	318
▨	Dark green	268	937
◻	Red	19	347
		510	

Note: Backstitch the fir cone outlines in dark green and the beak in black* (*used for backstitch only); make the eye with a black French knot.

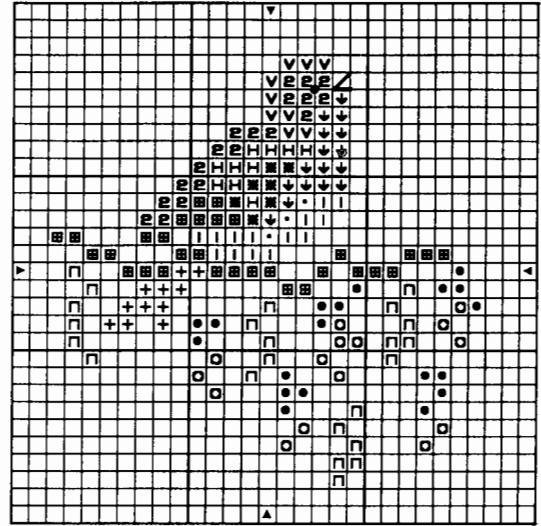
COMPLETE THREAD LIST

	ANCHOR	DMC	MADEIRA
◼	Black	403	Black
◻	White	1	White
▤	Medium grey	399	318
▥	Light grey	398	415
▦	Light beige	852	3033
▧	Yellow beige	373	422
▨	Light brown	310	780
▩	Dark brown	360	898
◼	Dark red	20	498
◻	Red	19	347
◼	Deep pink	39	309
◻	Light pink	33	3706
▨	Deep orange	332	946
▩	Light orange	316	740
▤	Yellow green	278	472
▥	Olive	280	733
▦	Medium green	257	905
▧	Dark green	268	937
▨	Blue	979	312
			1010



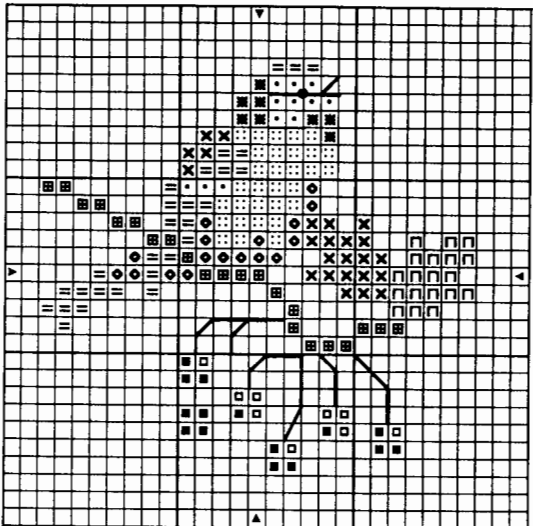


◀ GOLDFINCH	ANCHOR	DMC	MADEIRA	
■ Black	403	Black	Black	<i>Note: Backstitch the beak in black and make the eye with a black French knot.</i>
• White	1	White	White	
▣ Dark brown	360	898	2005	
▣ 2 Light brown	310	780	2009	
▣ 1 Light beige	852	3033	2109	
⊕ Yellow beige	373	422	2103	
▣ Red	19	347	510	
▣ Medium green	257	905	1412	
⊙ Yellow green	278	472	1414	
● Deep pink	39	309	507	
○ Light pink	33	3706	409	



◀ ROBIN	ANCHOR	DMC	MADEIRA	
Black*	403	Black	Black	<i>Note: Backstitch the beak in black* (*used for backstitch and French knot only) and make the eye with a black French knot.</i>
• White	1	White	White	
▣ 1 Light beige	852	3033	2109	
▣ 2 Light brown	310	780	2009	
▣ Deep brown	360	898	2005	
▣ Medium green	257	905	1412	
⊗ Dark green	268	937	1504	
▣ Red	19	347	510	
■ Dark red	20	498	513	
⬇ Light orange	316	740	204	
▣ H Deep orange	332	946	0207	

▲ BRAMBLING	ANCHOR	DMC	MADEIRA	
• White	1	White	White	<i>Note: Backstitch the beak in black and make the eye with a black French knot.</i>
✱ Black	403	Black	Black	
▣ Dark brown	360	898	2005	
▣ 2 Light brown	310	780	2009	
▣ 1 Light beige	852	3033	2109	
⊕ Yellow beige	373	422	2103	
⬇ Light orange	316	740	0204	
▣ H Deep orange	332	946	0207	
○ Light pink	33	3706	409	
● Deep pink	39	309	507	
∇ Medium grey	399	318	1802	
▣ Medium green	257	905	1412	



◀ BLUE TIT	ANCHOR	DMC	MADEIRA	
• White	1	White	White	<i>Note: Backstitch the cherry stems in dark green, and the head and beak in black; make the eye with a black French knot.</i>
✱ Black	403	Black	Black	
▣ Blue	979	312	1010	
▣ Dark brown	360	898	2005	
▣ Medium green	257	905	1412	
⊗ Dark green	268	937	1504	
▣ Red	19	347	510	
■ Dark red	20	498	513	
⊙ Yellow green	278	472	1414	
◇ Olive	280	733	1611	