

Geometric 1 (Exclusive Pattern)

- ☒ DMC 310 Black
- ◻ DMC 543 Ultra Very Light Beige Brown
- DMC 3823 Ultra Pale Yellow
- ⊕ DMC 352 Light Coral
- DMC 783 Medium Topaz

* To work out the size of the finished article, take the number of stitches and divide it by the count of your fabric (e.g 14,16,18 count aida etc) to get the size in inches. Times it by 2.5 to get centimetres.

* PLEASE NOTE: Our patterns are printed in a grid showing 10 x 10 stitches in each box. You may notice that the pages that run vertical have a maximum number of 9 rows at the top or bottom of a page. You are not missing a row or rows of stitches, this is the way our patterns print. It allows us to have larger print for your symbols.

* You should begin at the centre of the pattern which has been marked by a circle for you. To find the centre of the pattern it is just a matter of counting the vertical and horizontal stitches and divide them by half. Where the two points meet that is the centre.

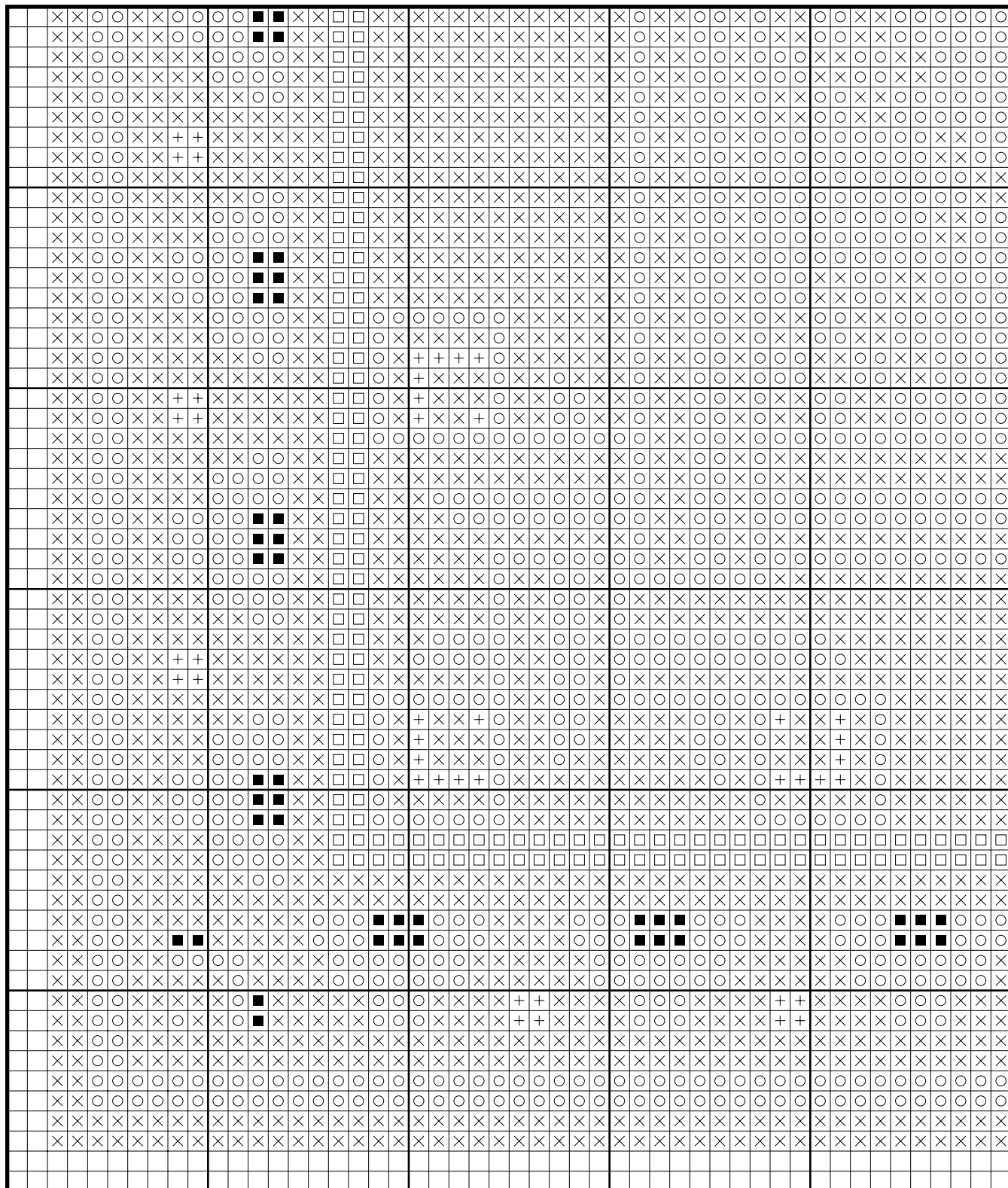
* Pattern is for personal use only and is not to be sold, copied or redistributed in any form. Copyright of Artecy Cross Stitch.

* 144 stitches wide by 144 stitches high, 5 colours used

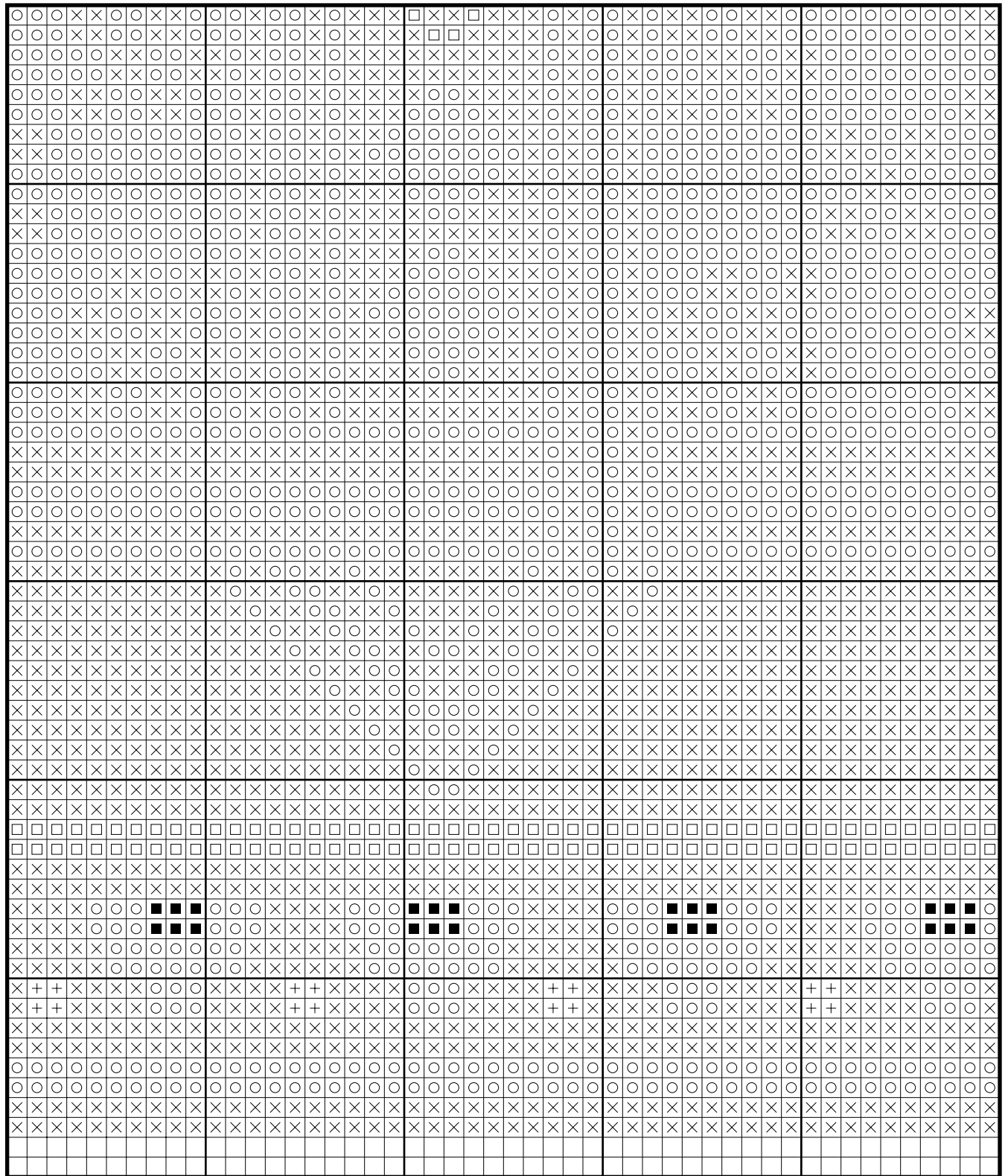
Artecy Cross Stitch and artist/designer Anne Shelton have teamed up to bring you this original custom designed pattern.

Anne Shelton has some of the most beautiful images I have found on the internet and I would highly recommend making a donation to her for the use of her graphics, the images are wonderful to work with. See her site here: <http://www.stamphistory.net/allpics/>

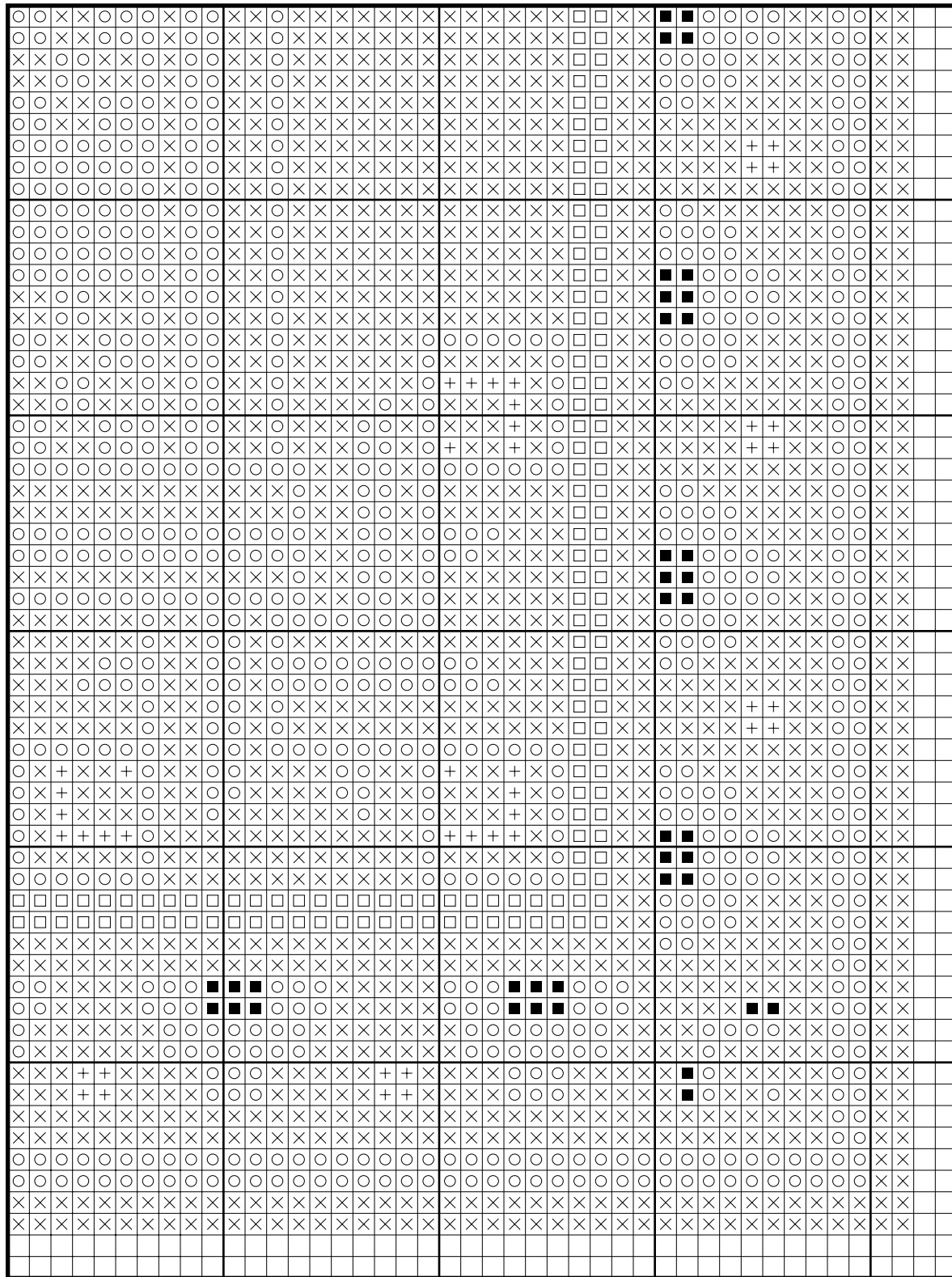
Geometric 1 (Exclusive Pattern)



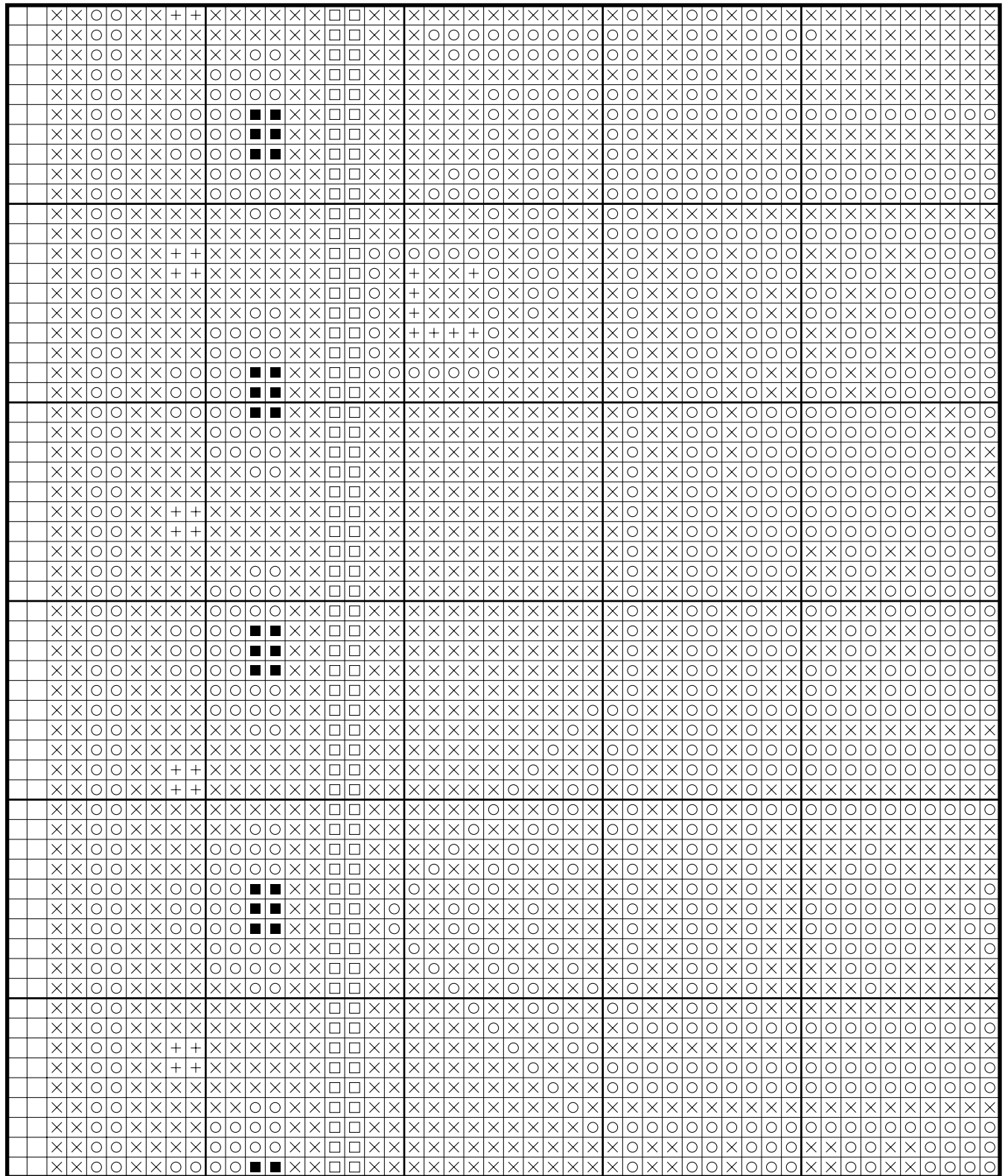
Geometric 1 (Exclusive Pattern)



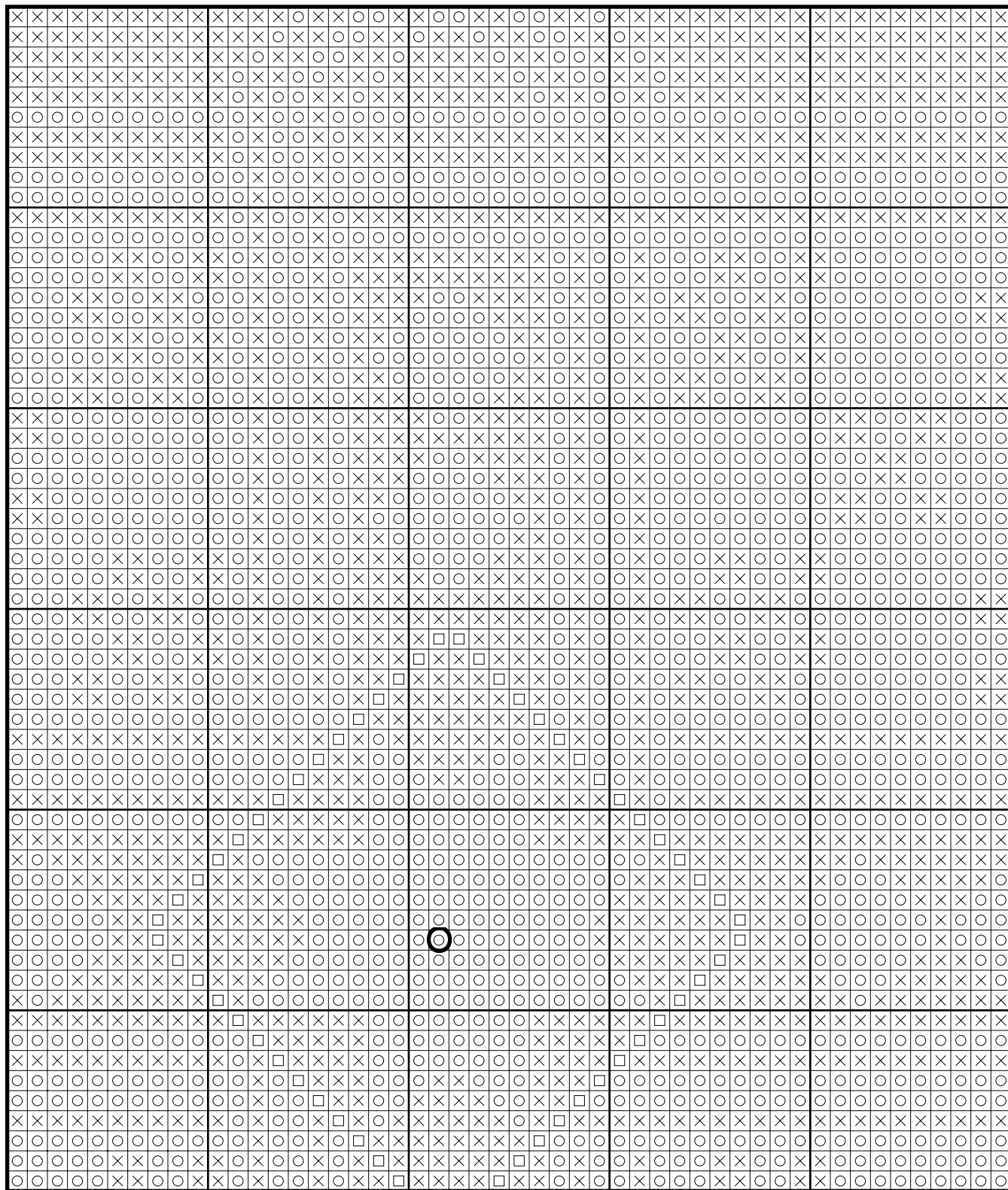
Geometric 1 (Exclusive Pattern)



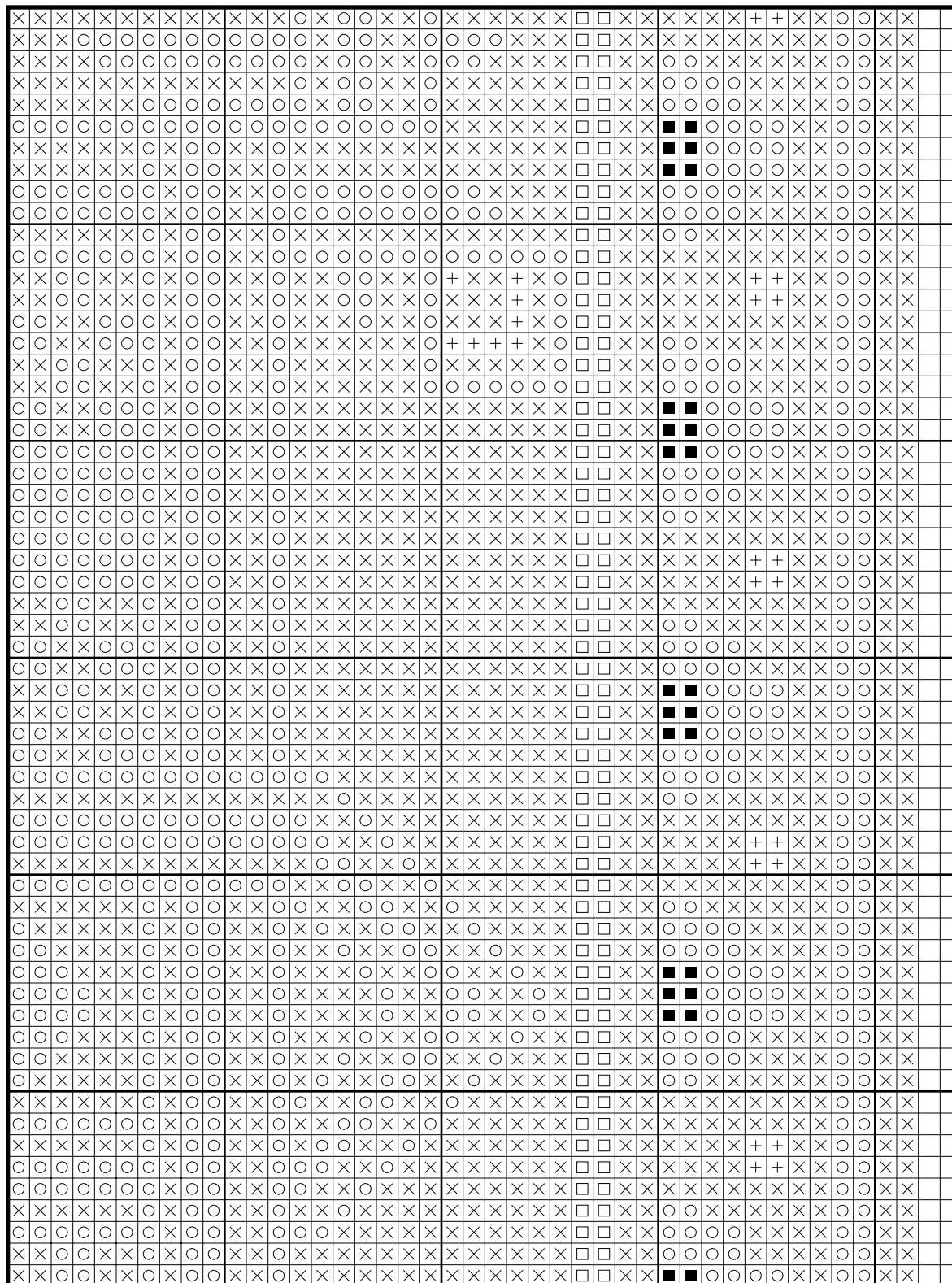
Geometric 1 (Exclusive Pattern)



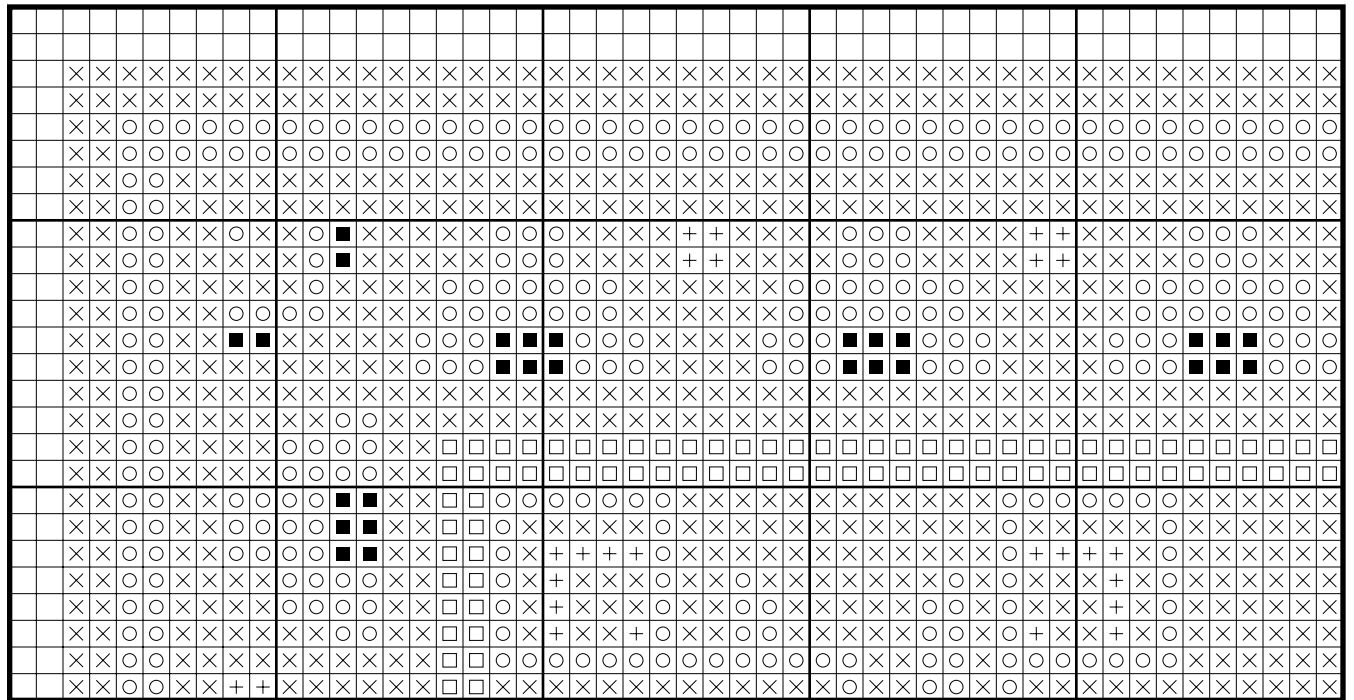
Geometric 1 (Exclusive Pattern)



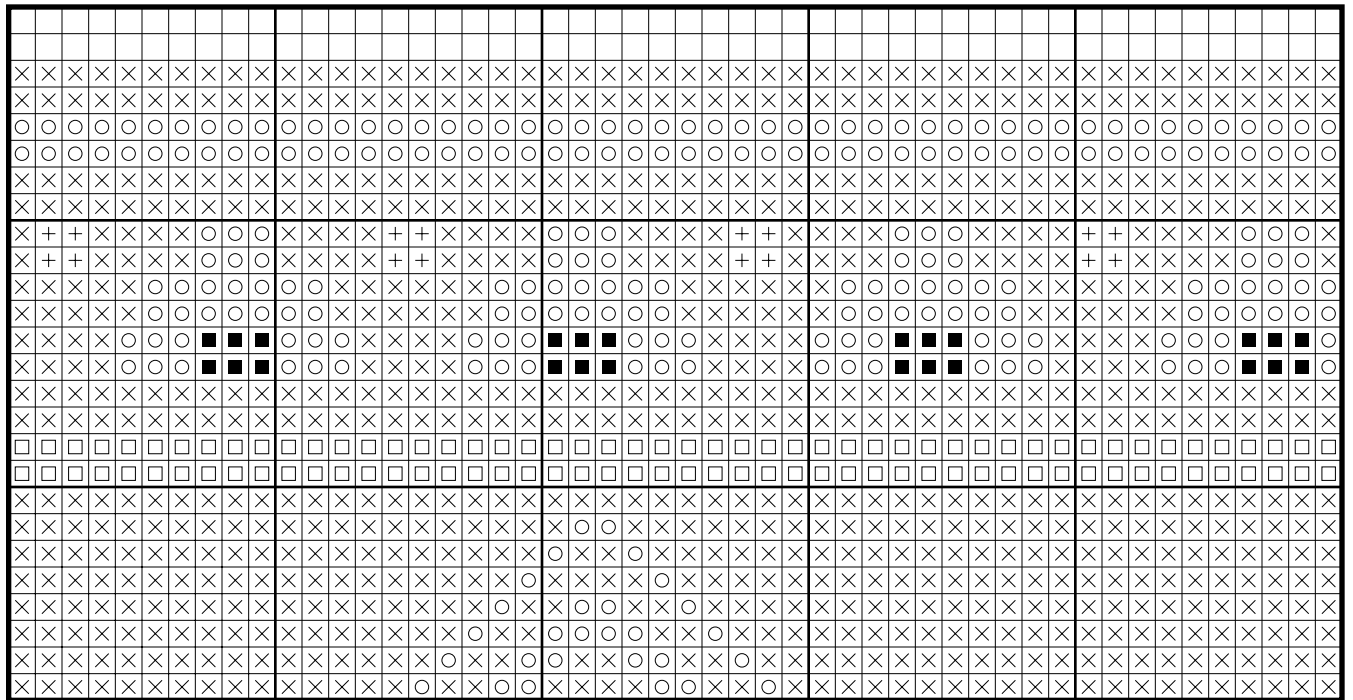
Geometric 1 (Exclusive Pattern)



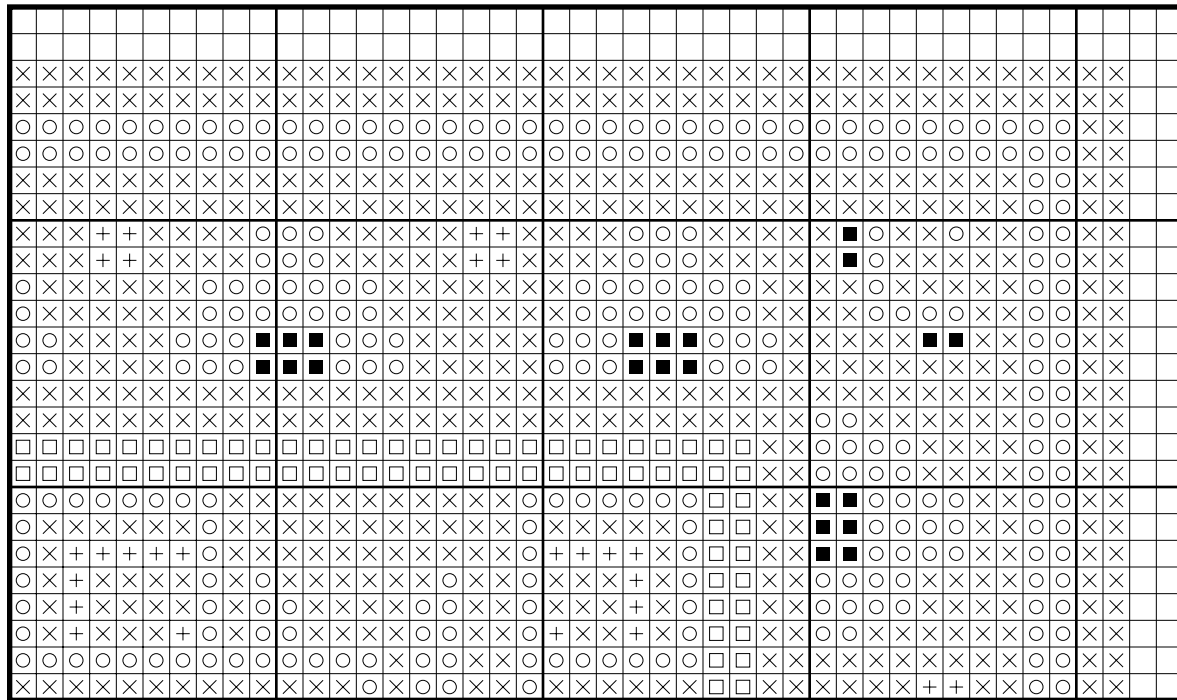
Geometric 1 (Exclusive Pattern)



Geometric 1 (Exclusive Pattern)



Geometric 1 (Exclusive Pattern)



Color distribution - geometric1

DMC 310 Black: 10931 stitches

DMC 543 Ultra Very Light Beige Brown: 940 stitches

DMC 3823 Ultra Pale Yellow: 7272 stitches

DMC 352 Light Coral: 225 stitches

DMC 783 Medium Topaz: 232 stitches

* Generally 30 stitches will use 1 metre of DMC floss.

PATTERN LAYOUT		
8	9	10
5	6	7
2	3	4

