

Summer by Alphonse Mucha

☒	DMC 934 Black Avocado Green
◻	DMC 938 Ultra Dark Coffee Brown
◉	DMC 3781 Dark Mocha Brown
+	DMC 300 Very Dark Mahogany
■	DMC 632 Ultra Very Dark Desert Sand
▴	DMC 781 Very Dark Topaz
●	DMC 611 Drab Brown
⊠	DMC 900 Dark Burnt Orange
◇	DMC 3857 Dark Rosewood
▾	DMC 782 Dark Topaz
⊞	DMC 970 Light Pumpkin
◉	DMC 356 Medium Terra Cotta
⊕	DMC 3829 Very Dark Old Gold
◻	DMC 370 Medium Mustard
▴	DMC 3826 Golden Brown
↑	DMC 976 Medium Golden Brown
△	DMC 372 Light Mustard
⊞	DMC 733 Medium Olive Green
▾	DMC 3854 Medium Autumn Gold
⊞	DMC 722 Light Orange Spice
⊥	DMC 977 Light Golden Brown
▾	DMC 3827 Pale Golden Brown
⊞	DMC 3822 Light Straw
▴	DMC 725 Topaz
◁	DMC 642 Dark Beige Gray
◻	DMC 959 Medium Seagreen
◻	DMC 996 Medium Electric Blue
+	DMC 3813 Light Blue Green
⊞	DMC 3782 Light Mocha Brown
◻	DMC 758 Very Light Terra Cotta
⊞	DMC 966 Medium Baby Green
▯	DMC 834 Very Light Golden Olive
▯	DMC 945 Tawny
⊞	DMC 743 Medium Yellow
⊞	DMC 744 Pale Yellow
⊞	DMC 564 Very Light Jade
▯	DMC 3811 Very Light Turquoise
⊞	DMC 369 Very Light Pistachio Green
⊞	DMC 3865 Winter White

* To work out the size of the finished article, take the number of stitches and divide it by the count of your fabric (e.g 14,16,18 count aida etc) to get the size in inches. Times it by 2.5 to get centimetres.

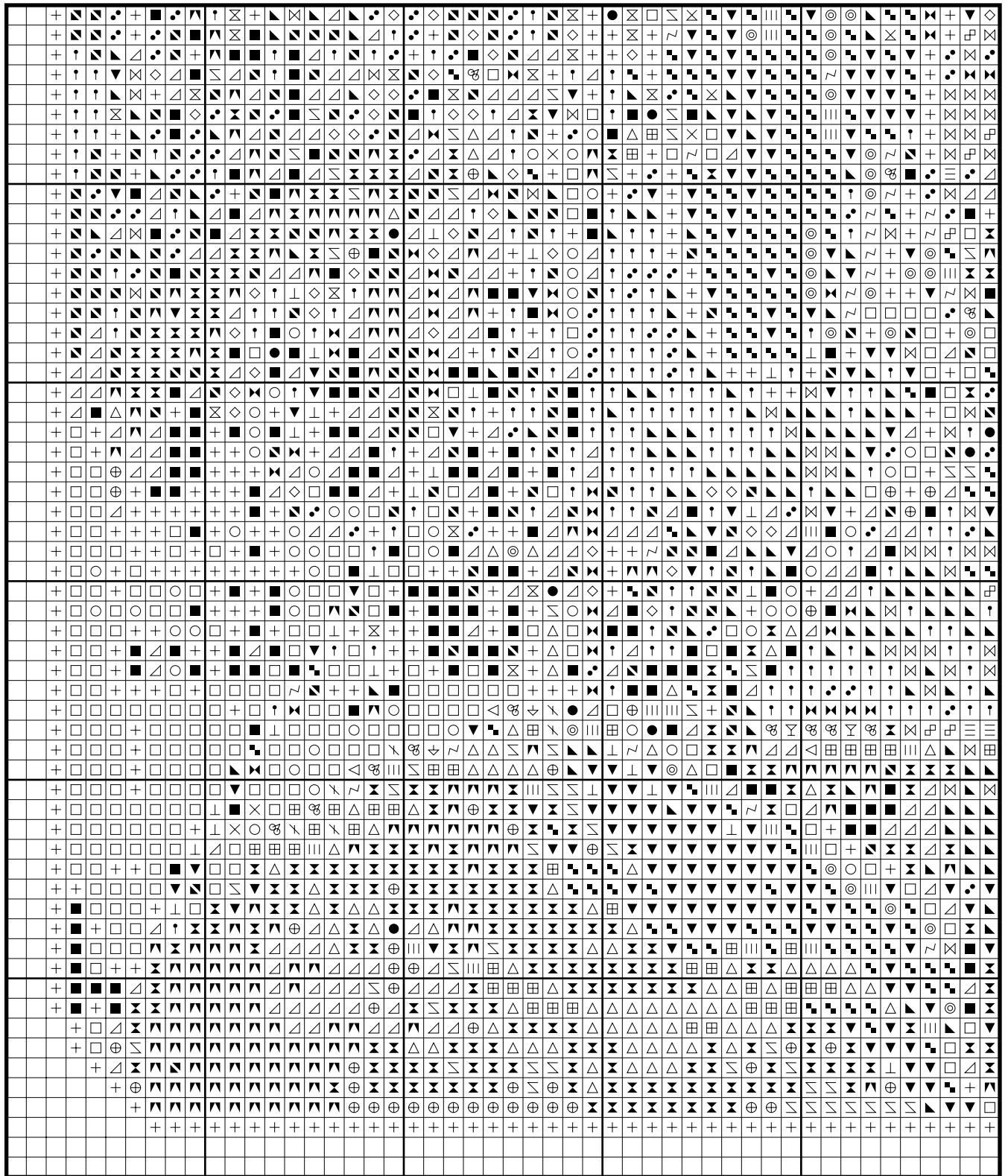
* PLEASE NOTE: Our patterns are printed in a grid showing 10 x 10 stitches in each box. You may notice that the pages that run vertical have a maximum number of 9 rows at the top or bottom of a page. You are not missing a row or rows of stitches, this is the way our patterns print. It allows us to have larger print for your symbols.

* You should begin at the centre of the pattern which has been marked by a circle for you. To find the centre of the pattern it is just a matter of counting the vertical and horizontal stitches and divide them by half. Where the two points meet that is the centre.

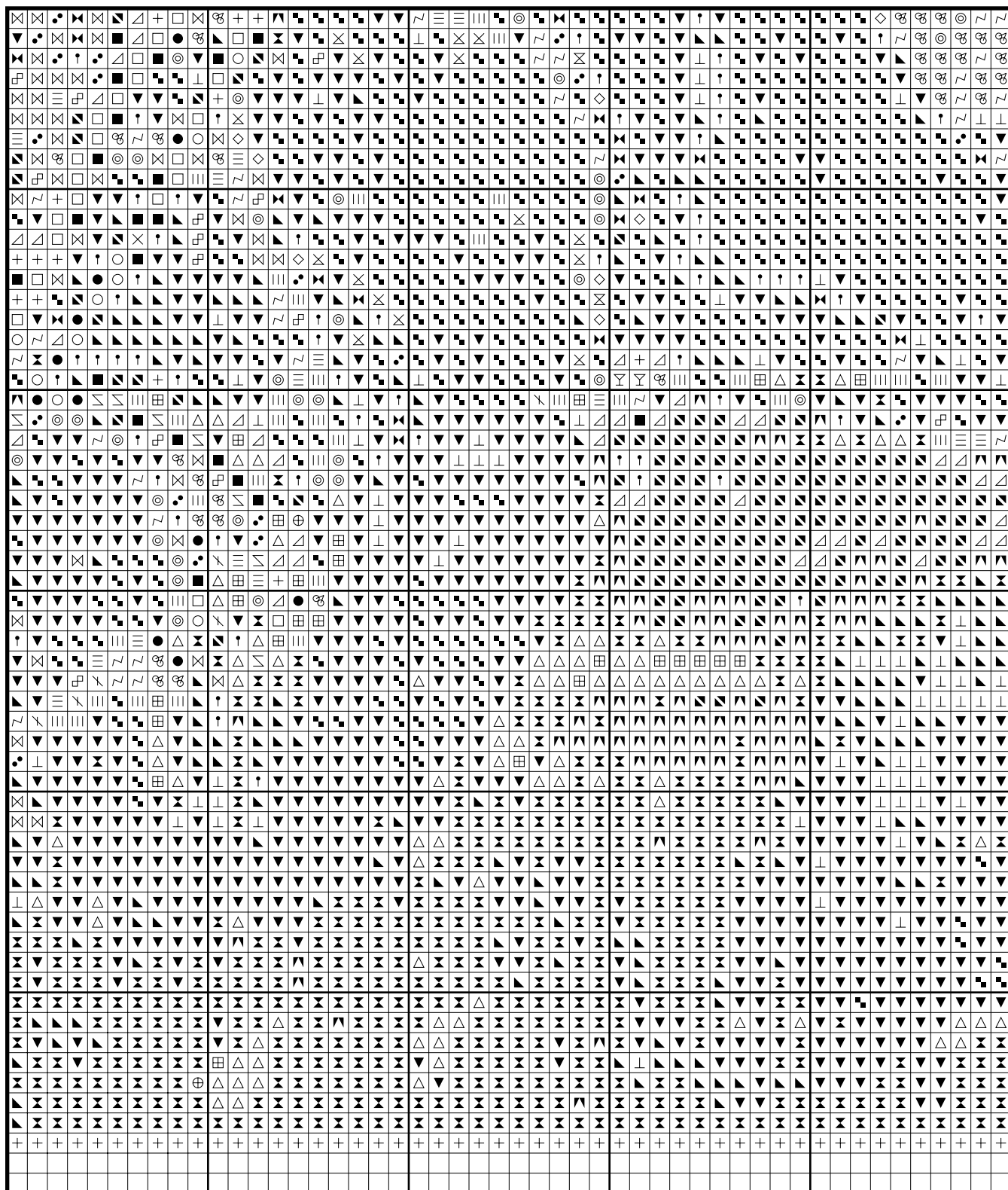
* Pattern is for personal use only and is not to be sold, copied or redistributed in any form. Copyright of Artec Cross Stitch.

* 120 stitches wide by 234 stitches high, 39 colours used

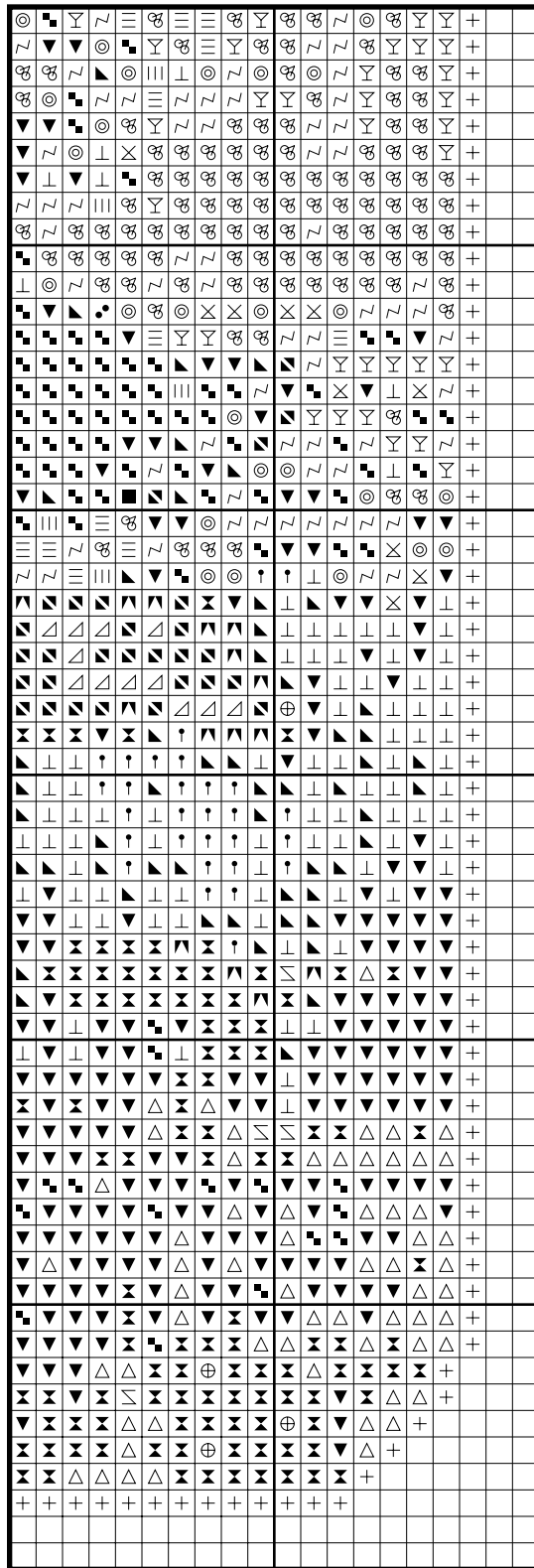
Summer by Alphonse Mucha



Summer by Alphonse Mucha



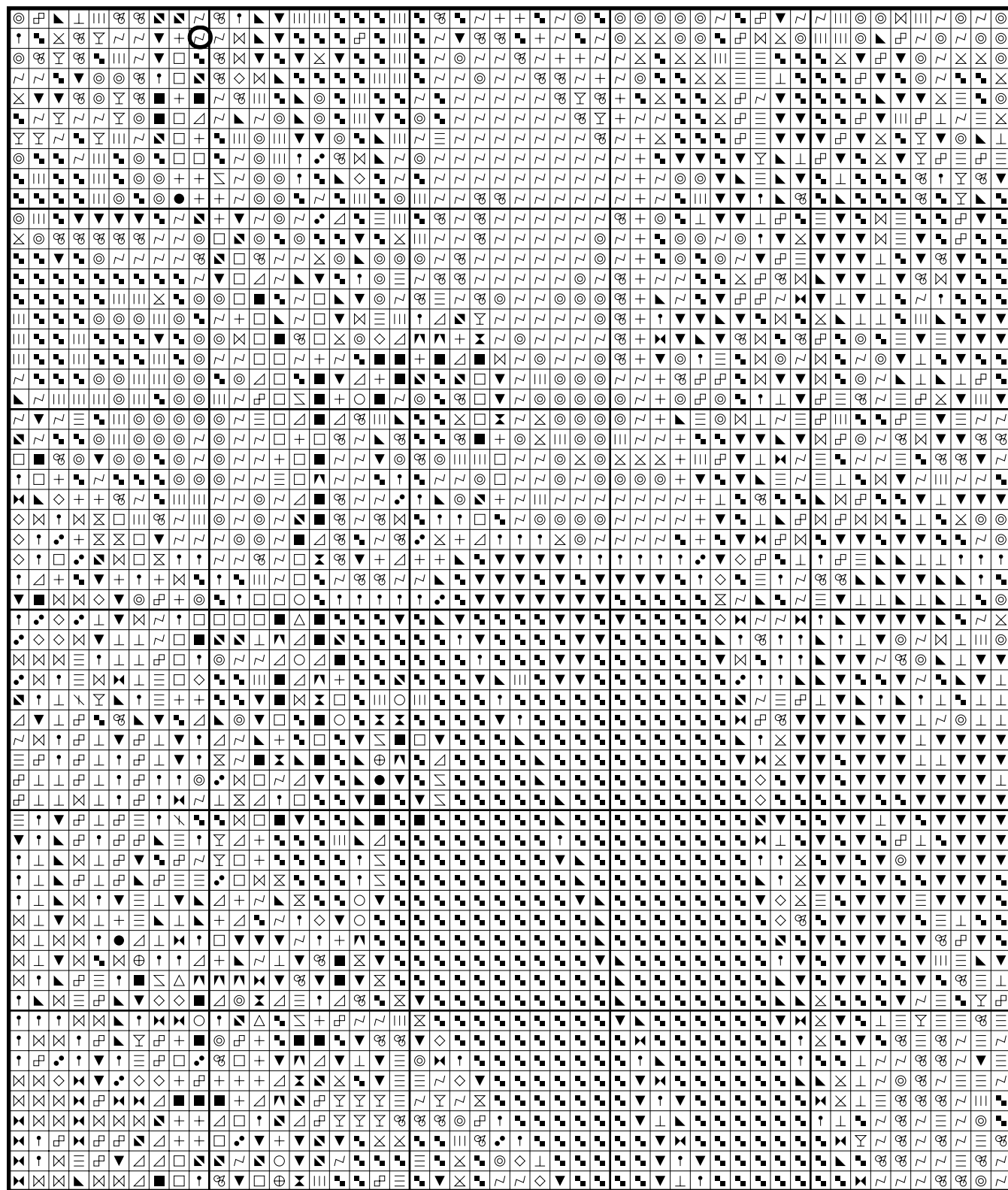
Summer by Alphonse Mucha



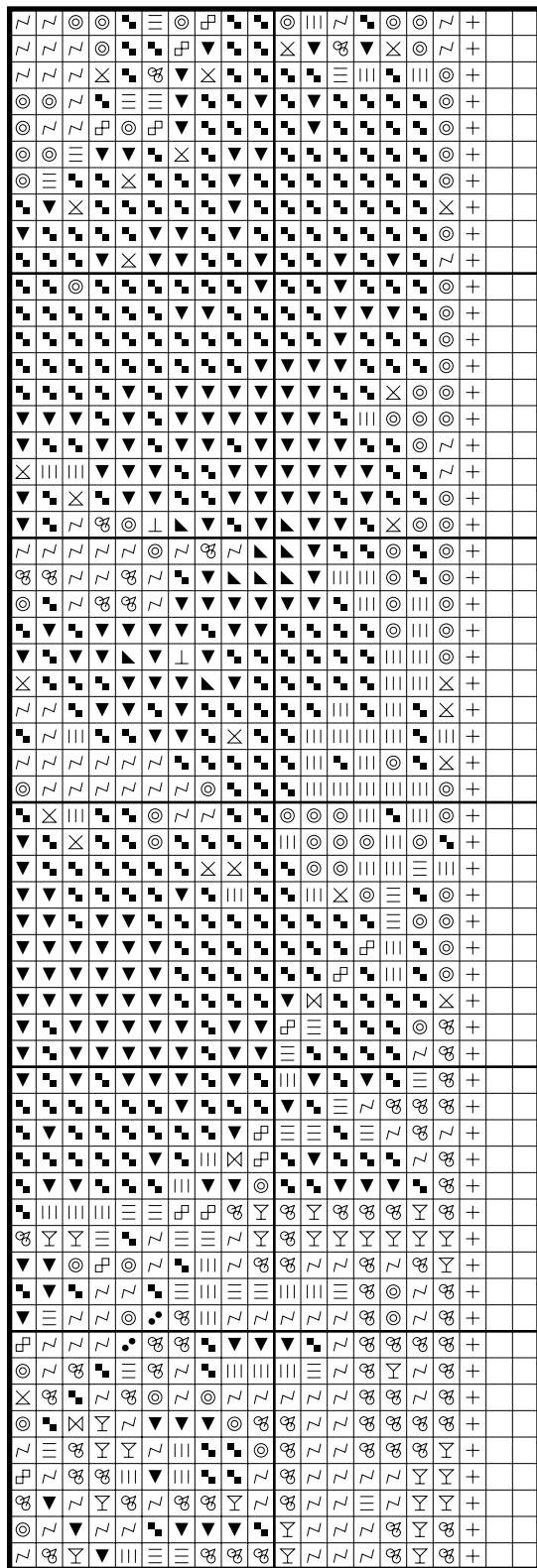
Summer by Alphonse Mucha



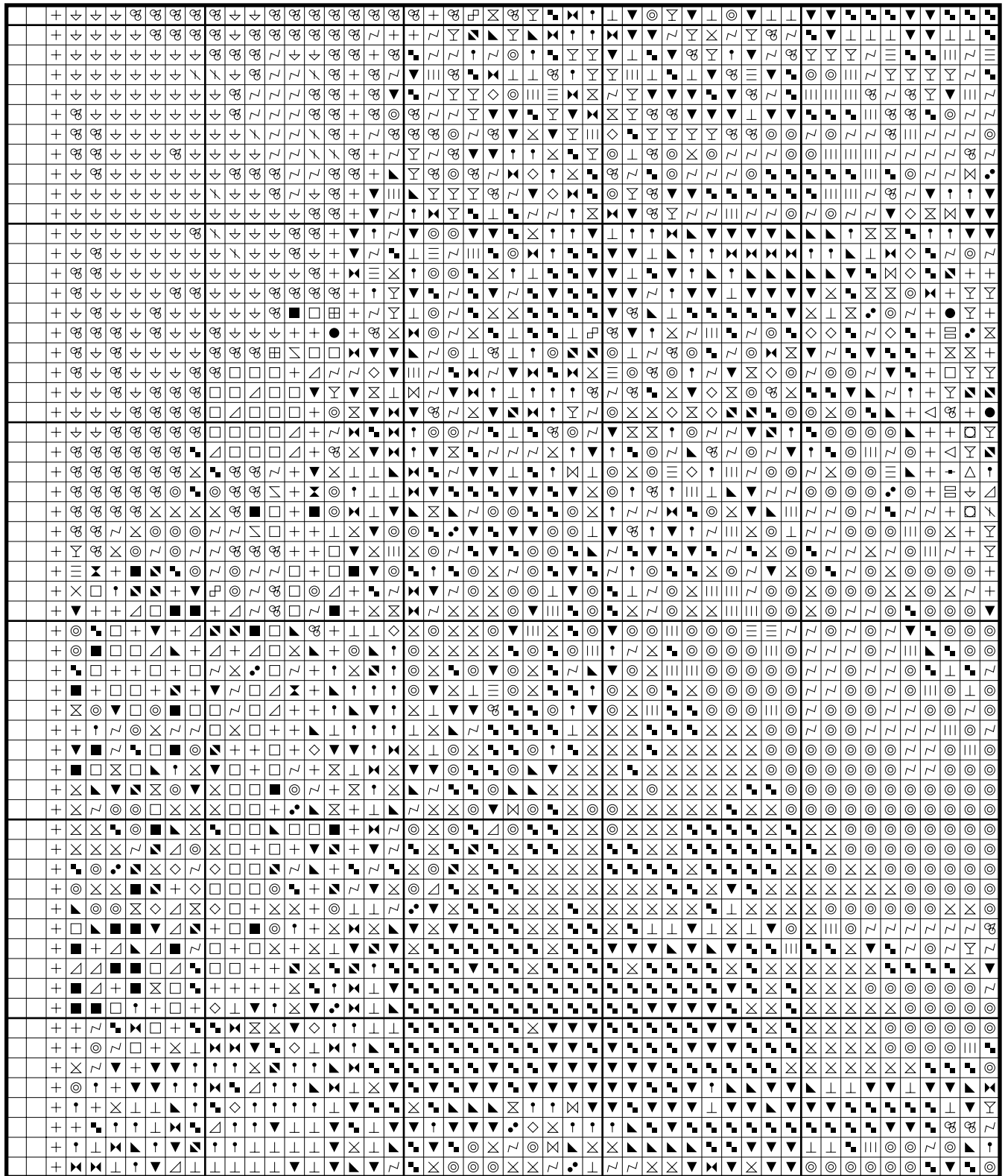
Summer by Alphonse Mucha



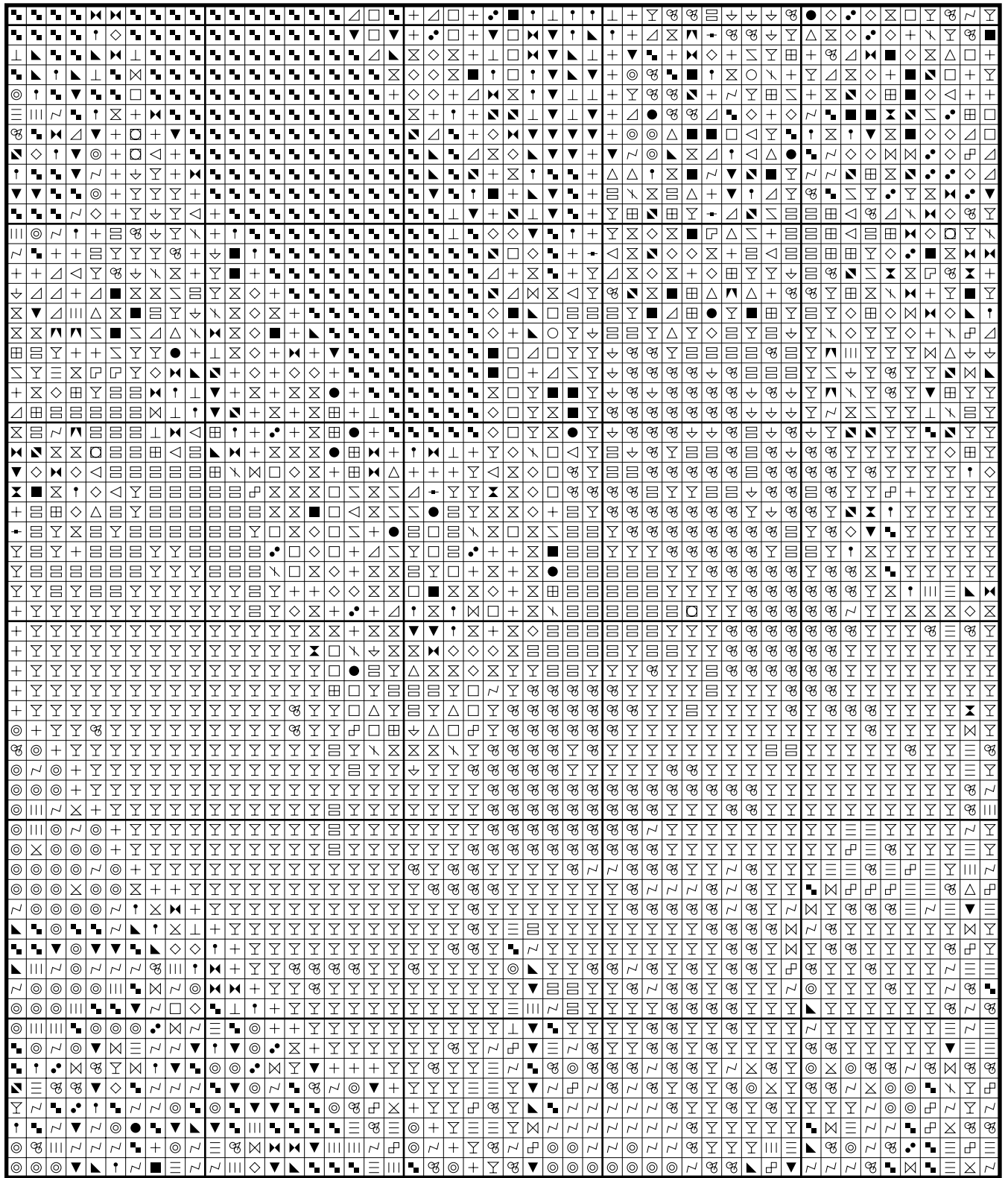
Summer by Alphonse Mucha



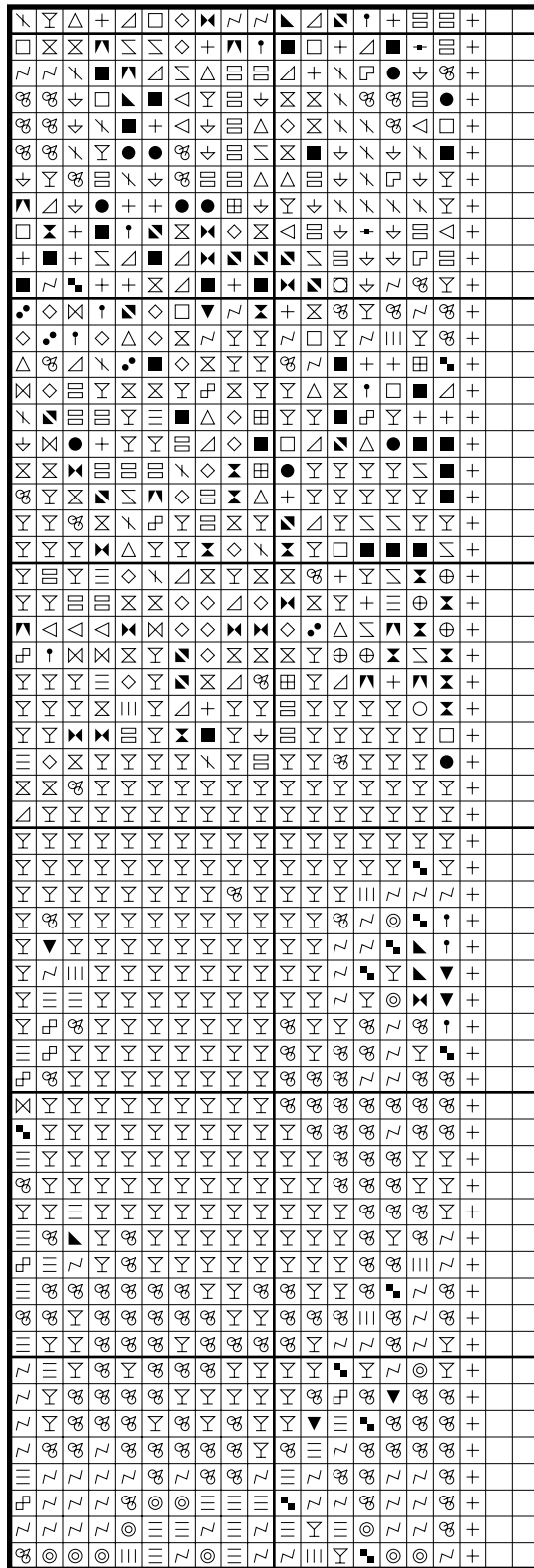
Summer by Alphonse Mucha



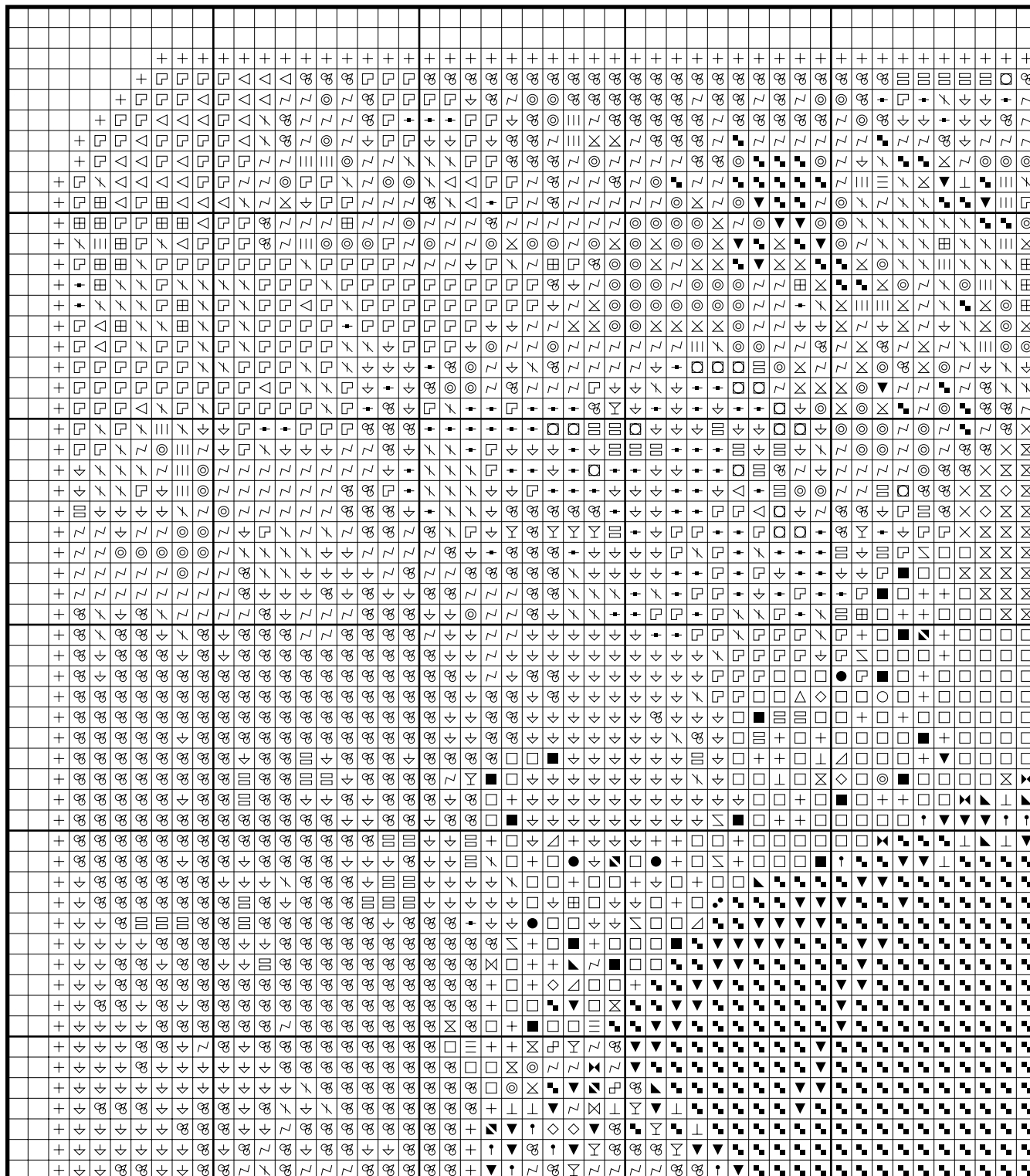
Summer by Alphonse Mucha



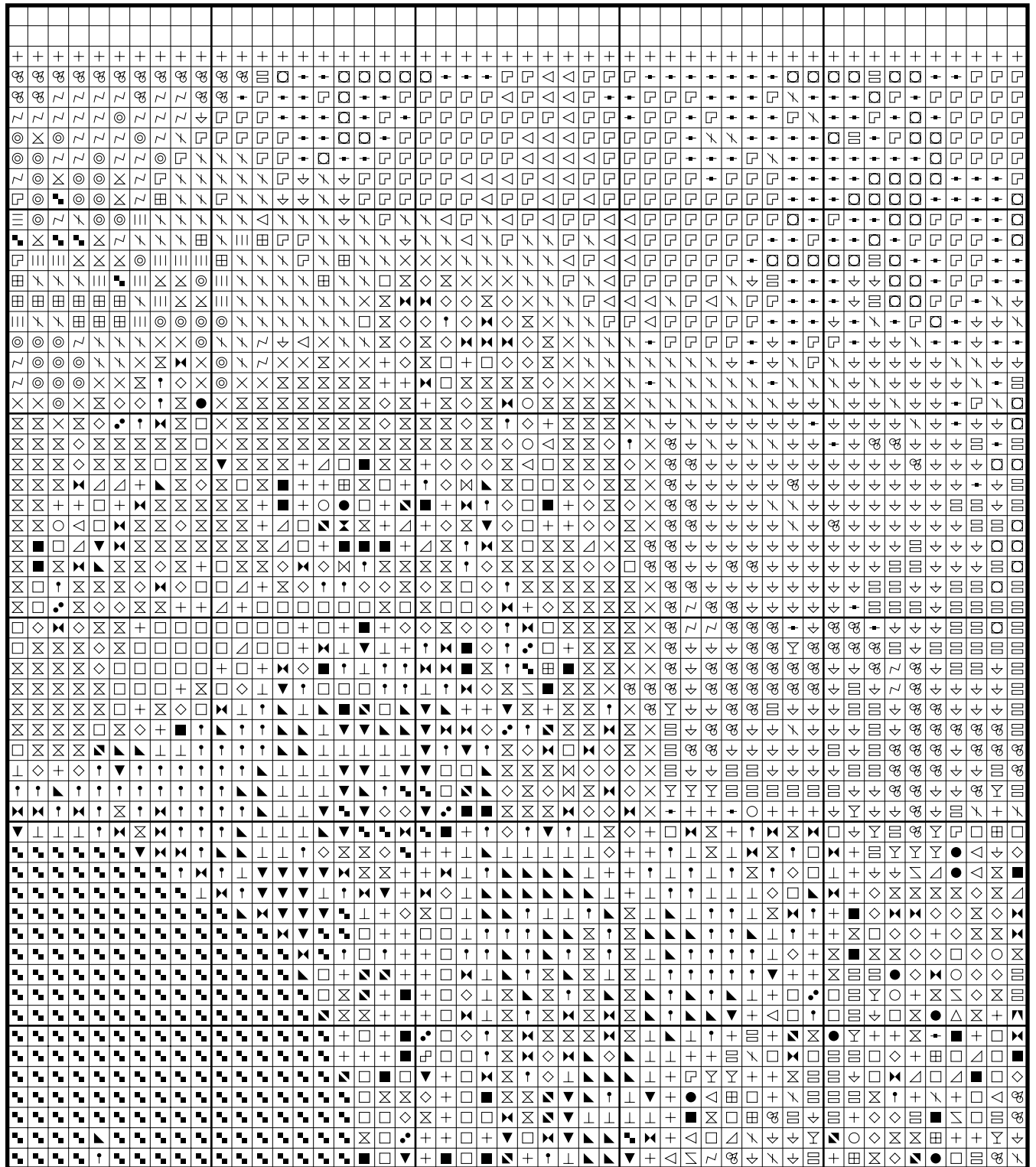
Summer by Alphonse Mucha



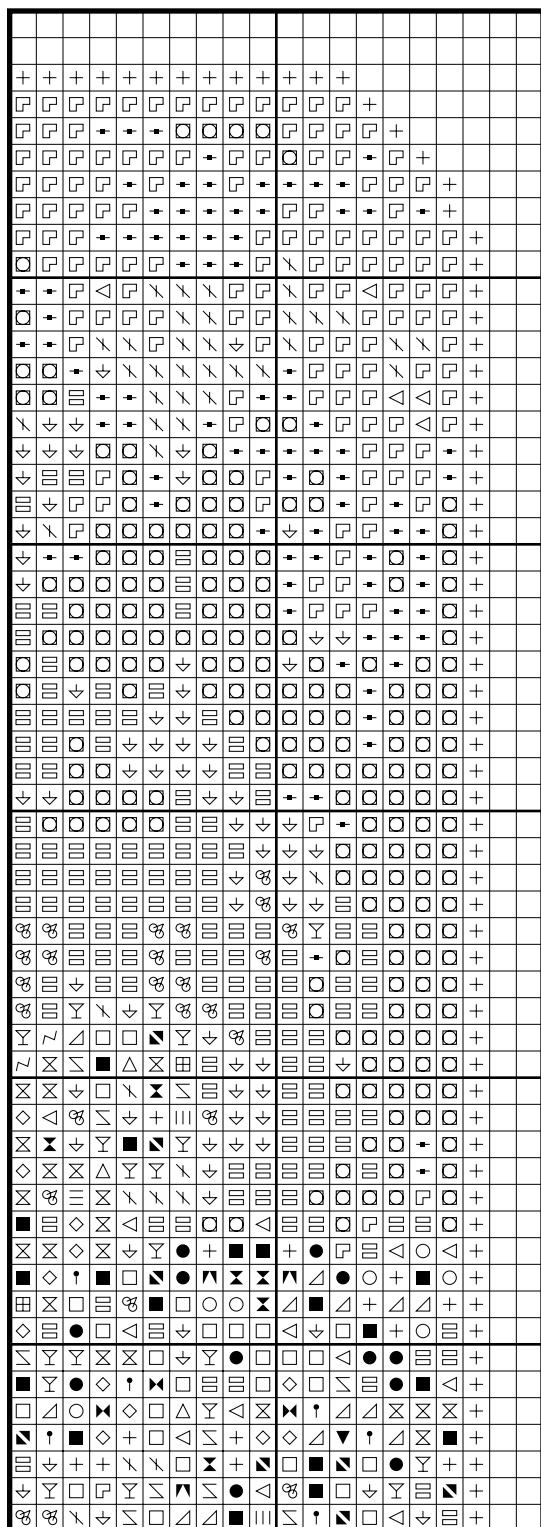
Summer by Alphonse Mucha



Summer by Alphonse Mucha



Summer by Alphonse Mucha



Color distribution - summerbymucha

DMC 934 Black Avocado Green: 68 stitches
 DMC 938 Ultra Dark Coffee Brown: 795 stitches
 DMC 3781 Dark Mocha Brown: 95 stitches
 DMC 300 Very Dark Mahogany: 1572 stitches
 DMC 632 Ultra Very Dark Desert Sand: 417 stitches
 DMC 781 Very Dark Topaz: 431 stitches
 DMC 611 Drab Brown: 79 stitches
 DMC 900 Dark Burnt Orange: 663 stitches
 DMC 3857 Dark Rosewood: 437 stitches
 DMC 782 Dark Topaz: 549 stitches
 DMC 970 Light Pumpkin: 329 stitches
 DMC 356 Medium Terra Cotta: 231 stitches
 DMC 3829 Very Dark Old Gold: 60 stitches
 DMC 370 Medium Mustard: 134 stitches
 DMC 3826 Golden Brown: 289 stitches
 DMC 976 Medium Golden Brown: 906 stitches
 DMC 372 Light Mustard: 282 stitches
 DMC 733 Medium Olive Green: 896 stitches
 DMC 3854 Medium Autumn Gold: 914 stitches
 DMC 722 Light Orange Spice: 317 stitches
 DMC 977 Light Golden Brown: 547 stitches
 DMC 3827 Pale Golden Brown: 2446 stitches
 DMC 3822 Light Straw: 563 stitches
 DMC 725 Topaz: 3663 stitches
 DMC 642 Dark Beige Gray: 134 stitches
 DMC 959 Medium Seagreen: 561 stitches
 DMC 996 Medium Electric Blue: 283 stitches
 DMC 3813 Light Blue Green: 318 stitches
 DMC 3782 Light Mocha Brown: 158 stitches
 DMC 758 Very Light Terra Cotta: 173 stitches
 DMC 966 Medium Baby Green: 414 stitches
 DMC 834 Very Light Golden Olive: 453 stitches
 DMC 945 Tawny: 255 stitches
 DMC 743 Medium Yellow: 1244 stitches
 DMC 744 Pale Yellow: 1407 stitches
 DMC 564 Very Light Jade: 859 stitches
 DMC 3811 Very Light Turquoise: 479 stitches
 DMC 369 Very Light Pistachio Green: 1782 stitches
 DMC 3865 Winter White: 1413 stitches

* Generally 30 stitches will use 1 metre of DMC floss.

PATTERN LAYOUT		
11	12	13
8	9	10
5	6	7
2	3	4

