

Geometric 2 (Exclusive Pattern)

⊗	DMC 310 Black
◻	DMC 912 Light Emerald Green
◉	DMC 986 Very Dark Forest Green
+	DMC 319 Very Dark Pistachio Green
■	DMC 3052 Medium Green Gray
◱	DMC 645 Very Dark Beaver Gray
●	DMC 937 Medium Avocado Green
⊗	DMC 453 Light Shell Gray
◊	DMC 3782 Light Mocha Brown
◼	DMC 3865 Winter White
⊞	DMC 739 Ultra Very Light Tan
◉	DMC 640 Very Dark Beige Gray
⊕	DMC 932 Light Antique Blue
◻	DMC 597 Turquoise
◼	DMC 3024 Very Light Brown Gray
↑	DMC 733 Medium Olive Green
△	DMC 3826 Golden Brown
⊗	DMC 3863 Medium Mocha Beige
◼	DMC 3862 Dark Mocha Beige
⊗	DMC 806 Dark Peacock Blue
⊥	DMC 913 Medium Nile Green
▼	DMC 807 Peacock Blue

* To work out the size of the finished article, take the number of stitches and divide it by the count of your fabric (e.g 14,16,18 count aida etc) to get the size in inches. Times it by 2.5 to get centimetres.

* PLEASE NOTE: Our patterns are printed in a grid showing 10 x 10 stitches in each box. You may notice that the pages that run vertical have a maximum number of 9 rows at the top or bottom of a page. You are not missing a row or rows of stitches, this is the way our patterns print. It allows us to have larger print for your symbols.

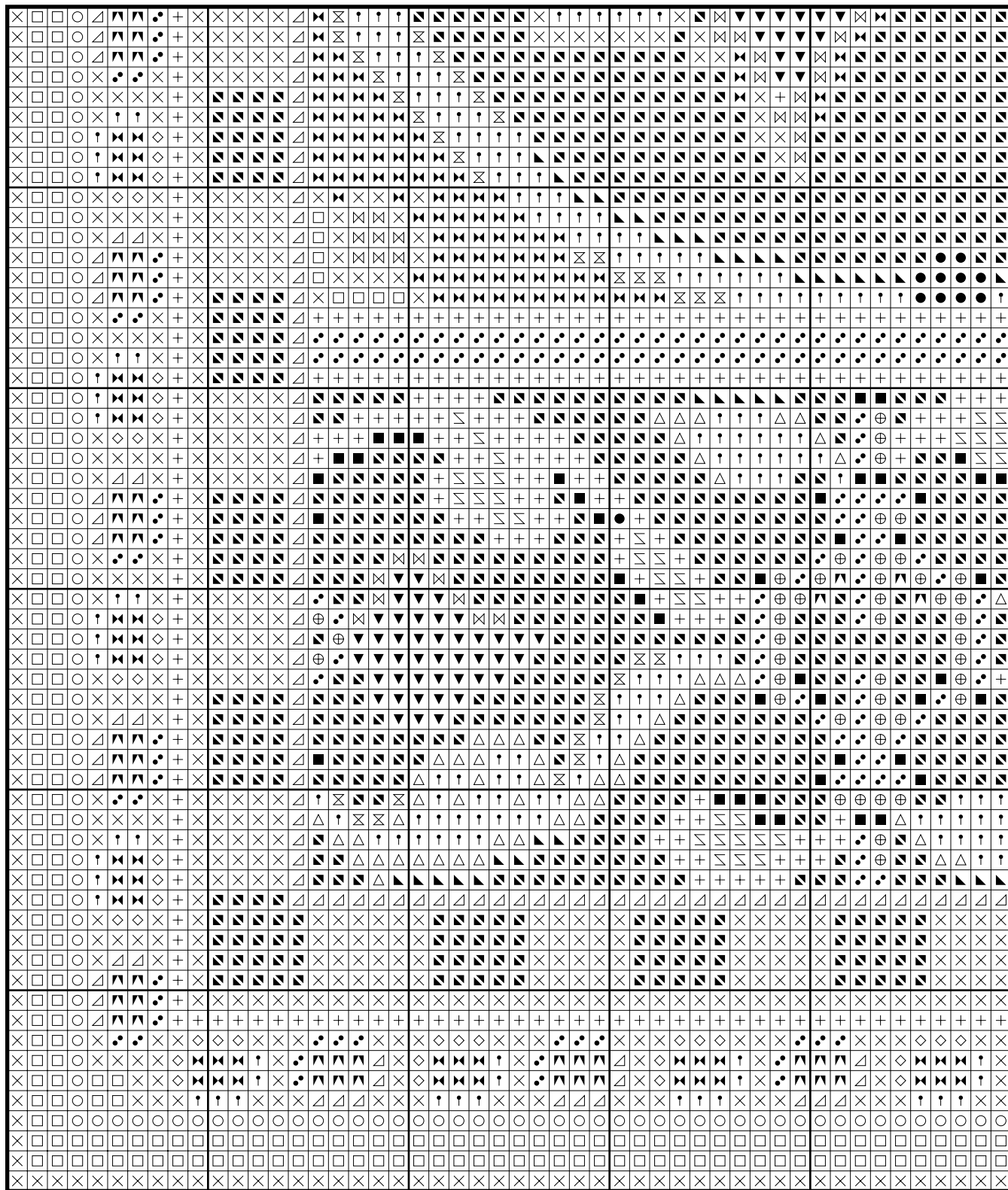
* You should begin at the centre of the pattern which has been marked by a circle for you. To find the centre of the pattern it is just a matter of counting the vertical and horizontal stitches and divide them by half. Where the two points meet that is the centre.

* Pattern is for personal use only and is not to be sold, copied or redistributed in any form. Copyright of Artecy Cross Stitch.

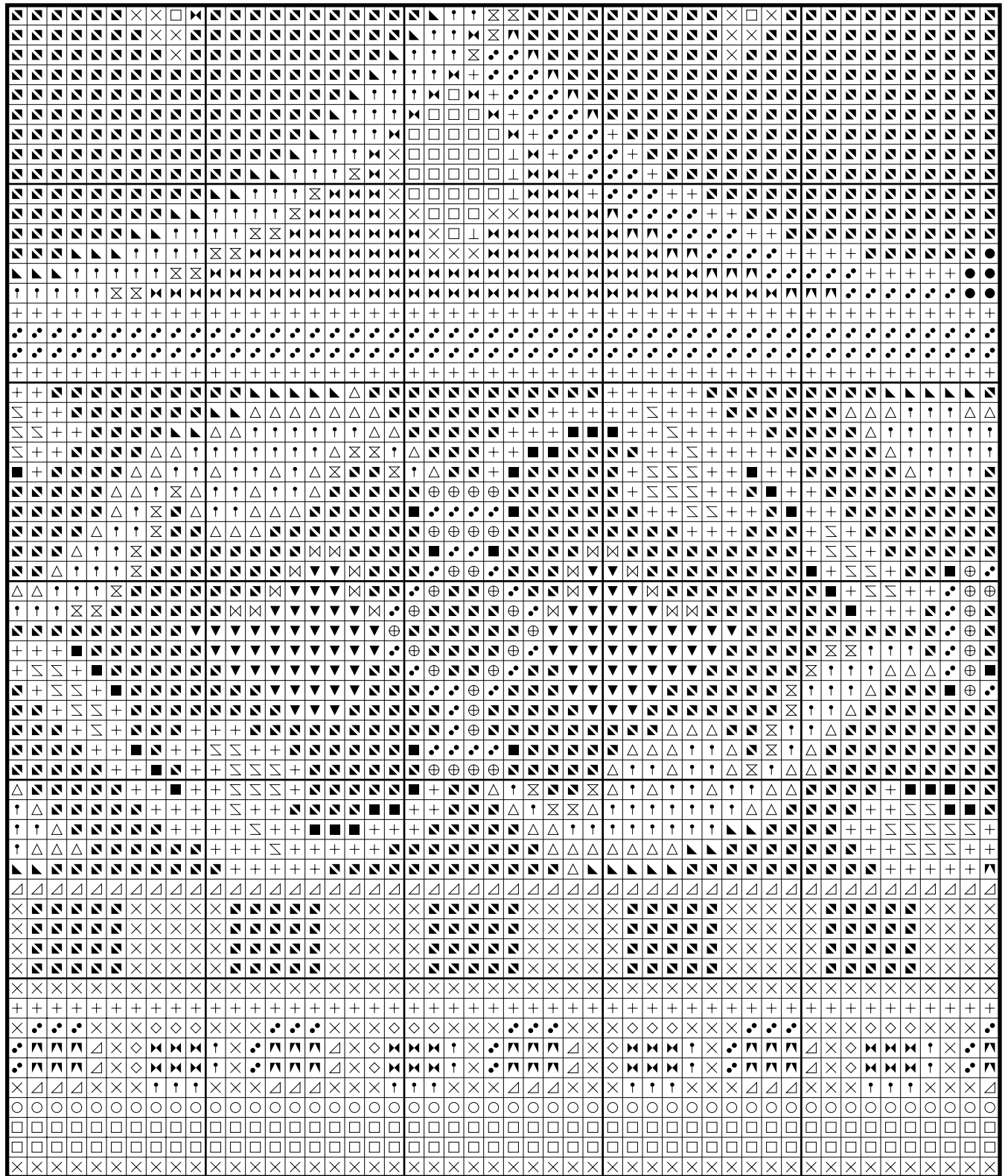
* 147 stitches wide by 175 stitches high, 22 colours used

Artecy Cross Stitch and artist/designer Anne Shelton have teamed up to bring you this original custom designed pattern.
Anne Shelton has some of the most beautiful images I have found on the internet and I would highly recommend making a donation to her for the use of her graphics, the images are wonderful to work with. See her site here: <http://www.stamphistory.net/allpics/>

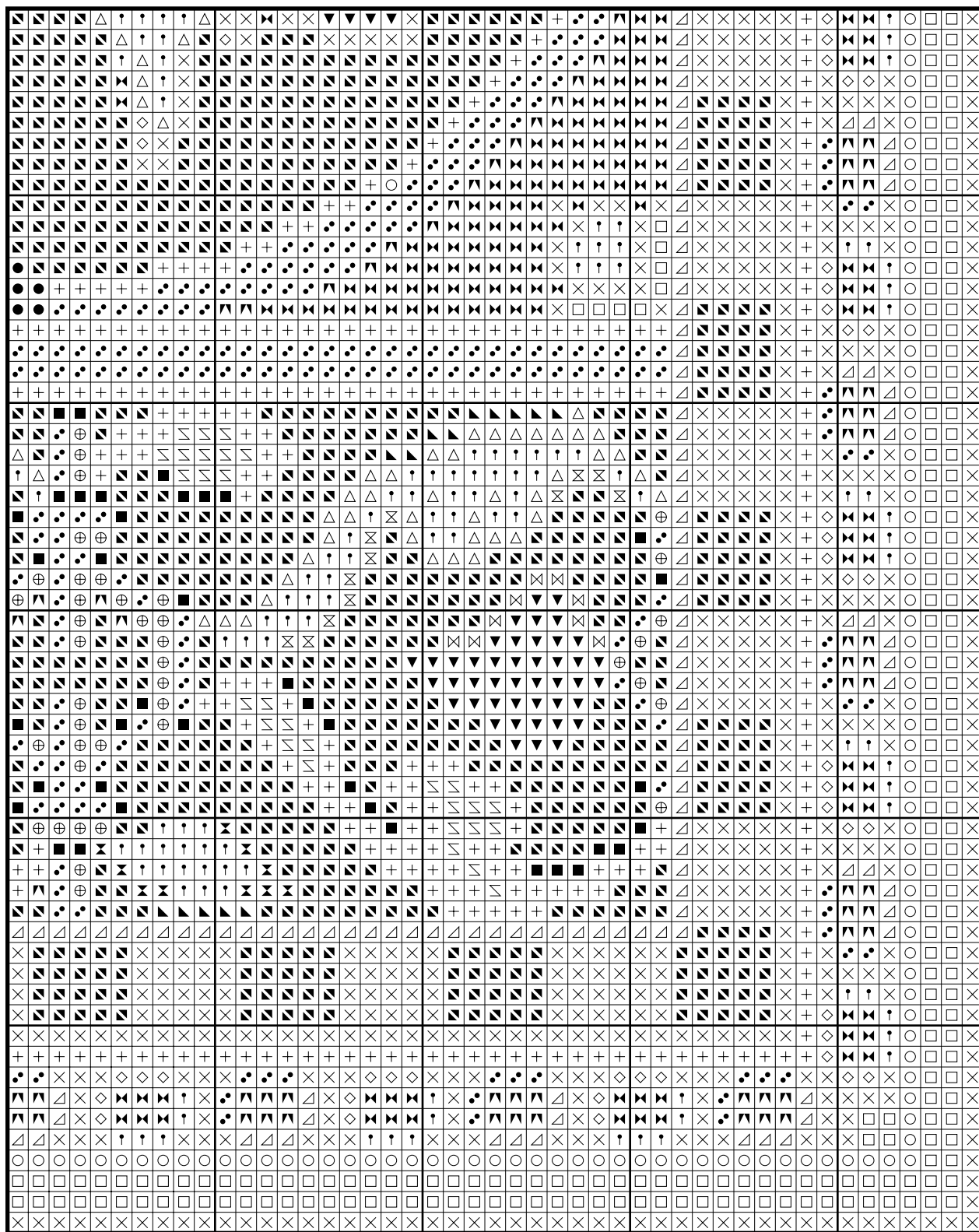
Geometric 2 (Exclusive Pattern)



Geometric 2 (Exclusive Pattern)



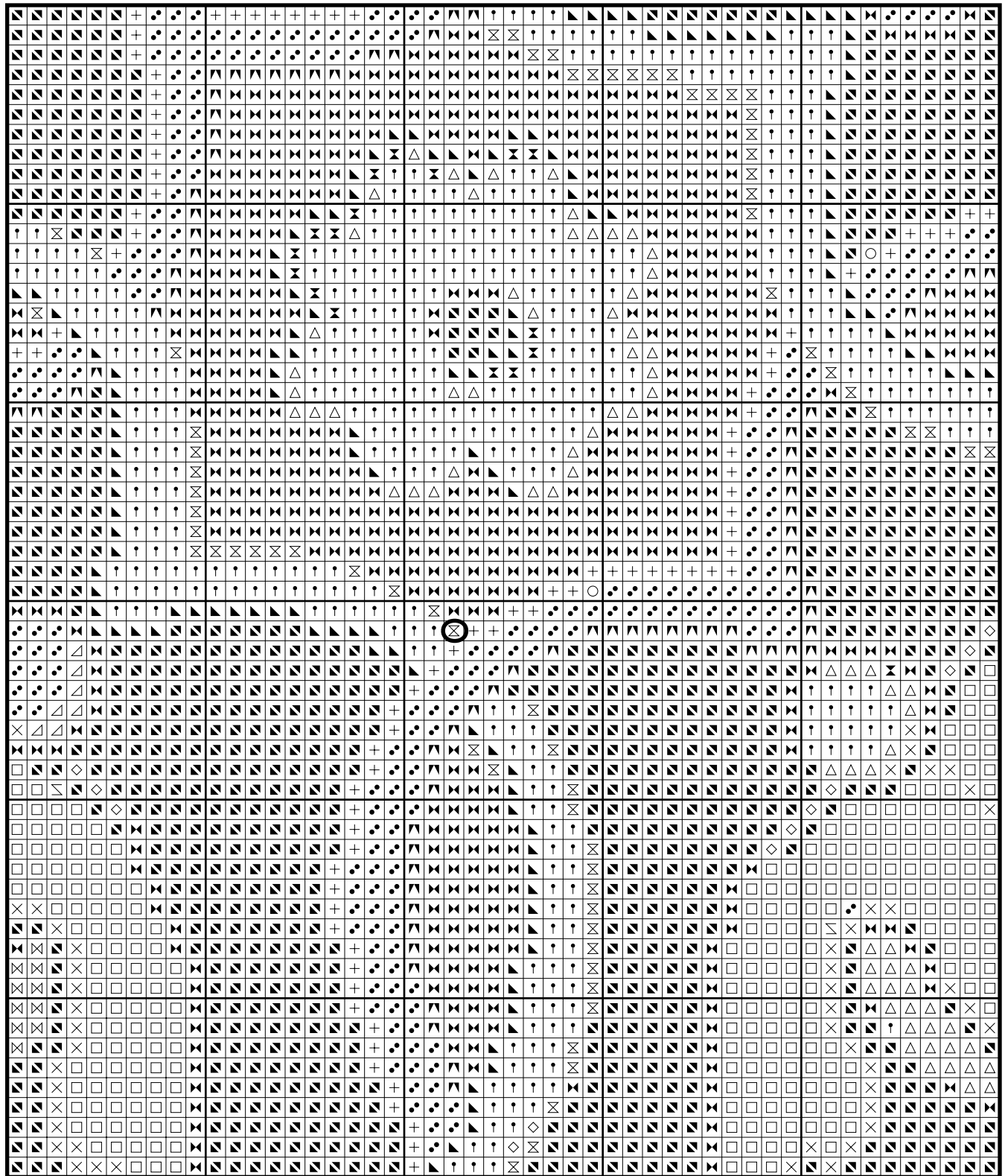
Geometric 2 (Exclusive Pattern)



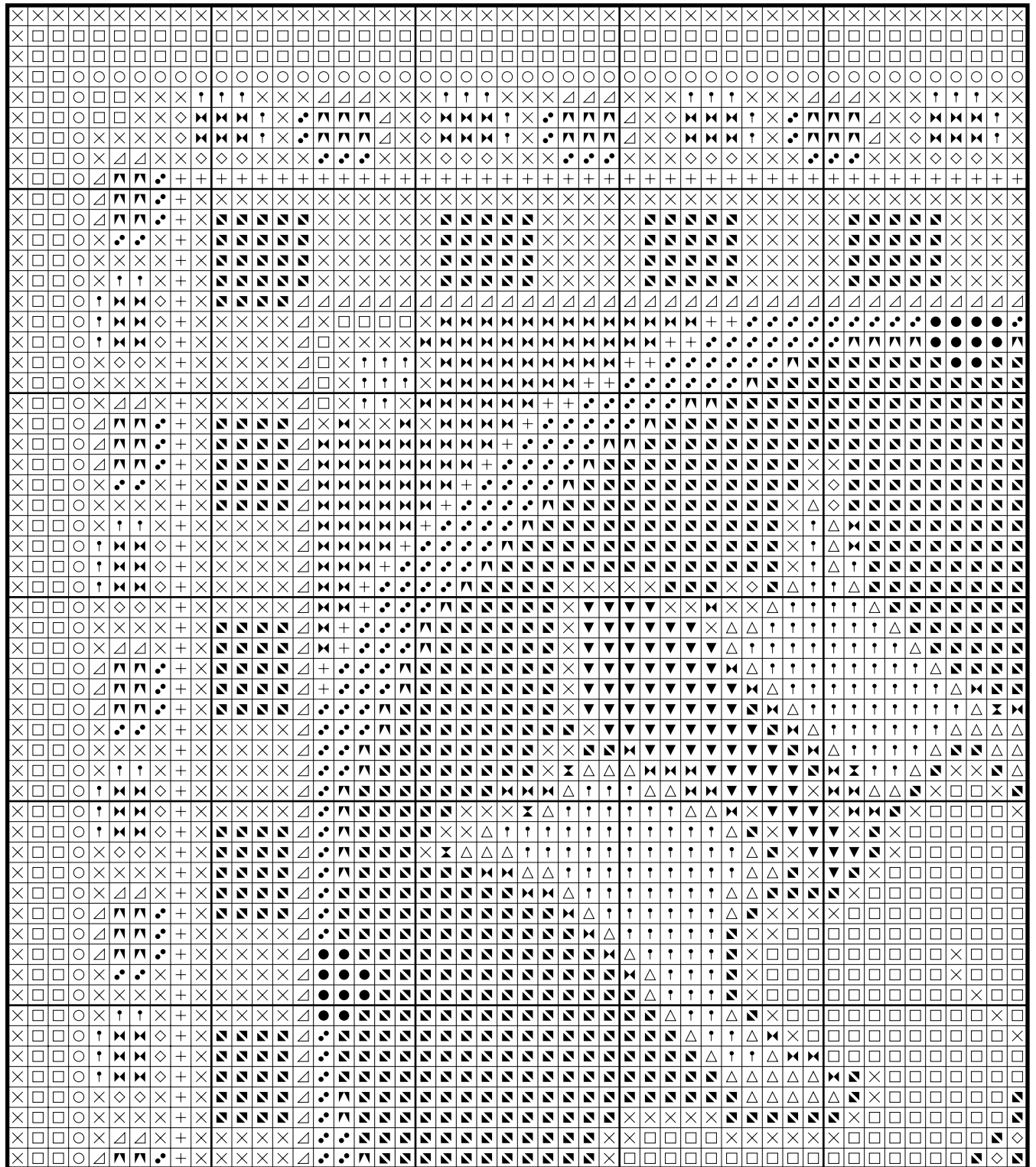
Geometric 2 (Exclusive Pattern)



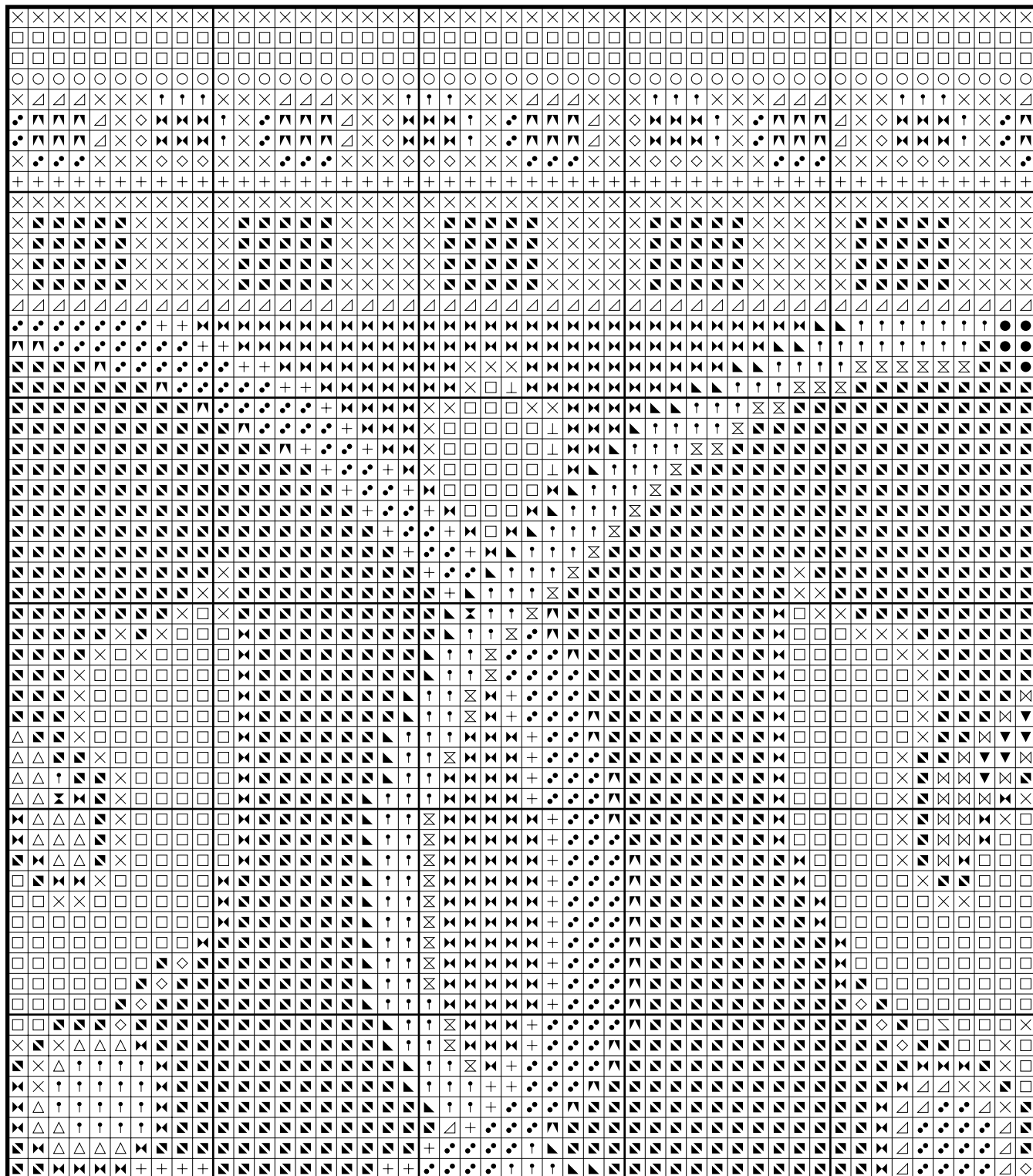
Geometric 2 (Exclusive Pattern)



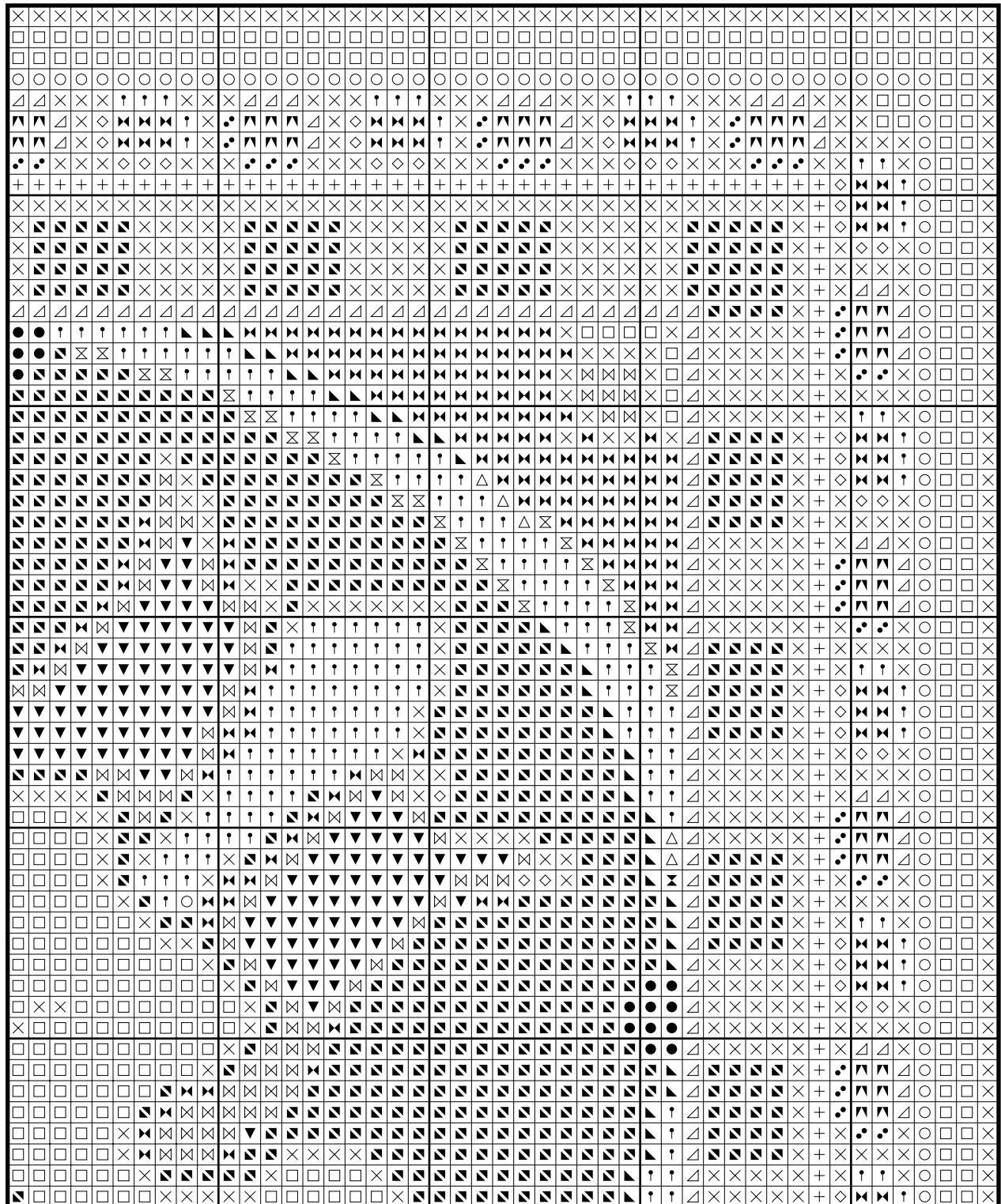
Geometric 2 (Exclusive Pattern)



Geometric 2 (Exclusive Pattern)



Geometric 2 (Exclusive Pattern)



Color distribution - geometric2

- DMC 310 Black: 3675 stitches
- DMC 912 Light Emerald Green: 2794 stitches
- DMC 986 Very Dark Forest Green: 620 stitches
- DMC 319 Very DarkPistachio Green: 1438 stitches
- DMC 3052 Medium Green Gray: 122 stitches
- DMC 645 Very Dark Beaver Gray: 796 stitches
- DMC 937 Medium Avocado Green: 81 stitches
- DMC 453 Light Shell Gray: 282 stitches
- DMC 3782 Light Mocha Brown: 290 stitches
- DMC 3865 Winter White: 7711 stitches
- DMC 739 Ultra Very Light Tan: 2099 stitches
- DMC 640 Very Dark Beige Gray: 1426 stitches
- DMC 932 Light Antique Blue: 121 stitches
- DMC 597 Turquoise: 119 stitches
- DMC 3024 Very Light Brown Gray: 532 stitches
- DMC 733 Medium Olive Green: 1896 stitches
- DMC 3826 Golden Brown: 447 stitches
- DMC 3863 Medium Mocha Beige: 35 stitches
- DMC 3862 Dark Mocha Beige: 386 stitches
- DMC 806 Dark Peacock Blue: 247 stitches
- DMC 913 Medium Nile Green: 16 stitches
- DMC 807 Peacock Blue: 592 stitches

* Generally 30 stitches will use 1 metre of DMC floss.

PATTERN LAYOUT		
8	9	10
5	6	7
2	3	4

