

Spring by Alphonse Mucha

⊗	DMC 936 Very Dark Avocado Green
◻	DMC 310 Black
⊙	DMC 938 Ultra Dark Coffee Brown
+	DMC 898 Very Dark Coffee Brown
■	DMC 3781 Dark Mocha Brown
▲	DMC 3362 Dark Pine Green
●	DMC 3363 Medium Pine Green
⊗	DMC 975 Dark Golden Brown
◇	DMC 300 Very Dark Mahogany
▣	DMC 869 Very Dark Hazelnut Brown
⊞	DMC 610 Dark Drab Brown
⊙	DMC 434 Light Brown
⊕	DMC 782 Dark Topaz
◻	DMC 973 Bright Canary
⬆	DMC 3829 Very Dark Old Gold
↑	DMC 370 Medium Mustard
△	DMC 976 Medium Golden Brown
⊞	DMC 680 Dark Old Gold
▣	DMC 3828 Hazelnut Brown
⊞	DMC 613 Very Light Drab Brown
⊥	DMC 3854 Medium Autumn Gold
▼	DMC 3827 Pale Golden Brown
⊗	DMC 437 Light Tan
■	DMC 725 Topaz
◁	DMC 3023 Light Brown Gray
◻	DMC 451 Dark Shell Gray
◻	DMC 3864 Light Mocha Beige
→	DMC 3013 Light Khaki Green
⊞	DMC 834 Very Light Golden Olive
◻	DMC 3856 Ultra Very Light Mahogany
⊞	DMC 743 Medium Yellow
⊞	DMC 727 Very Light Topaz
≡	DMC 3042 Light Antique Violet
⊙	DMC 3047 Light Yellow Beige
∞	DMC 3865 Winter White

* To work out the size of the finished article, take the number of stitches and divide it by the count of your fabric (e.g 14,16,18 count aida etc) to get the size in inches. Times it by 2.5 to get centimetres.

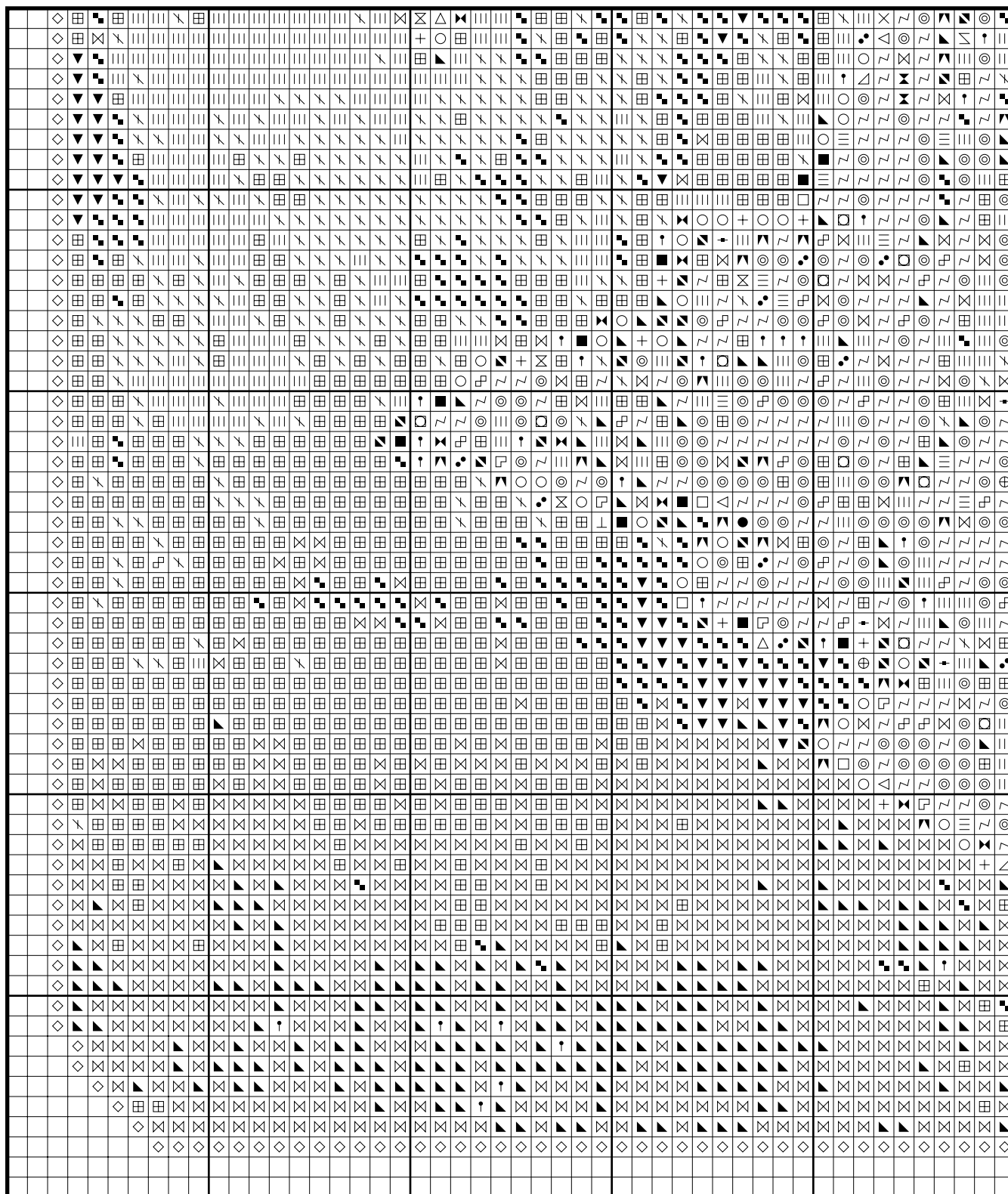
* PLEASE NOTE: Our patterns are printed in a grid showing 10 x 10 stitches in each box. You may notice that the pages that run vertical have a maximum number of 9 rows at the top or bottom of a page. You are not missing a row or rows of stitches, this is the way our patterns print. It allows us to have larger print for your symbols.

* You should begin at the centre of the pattern which has been marked by a circle for you. To find the centre of the pattern it is just a matter of counting the vertical and horizontal stitches and divide them by half. Where the two points meet that is the centre.

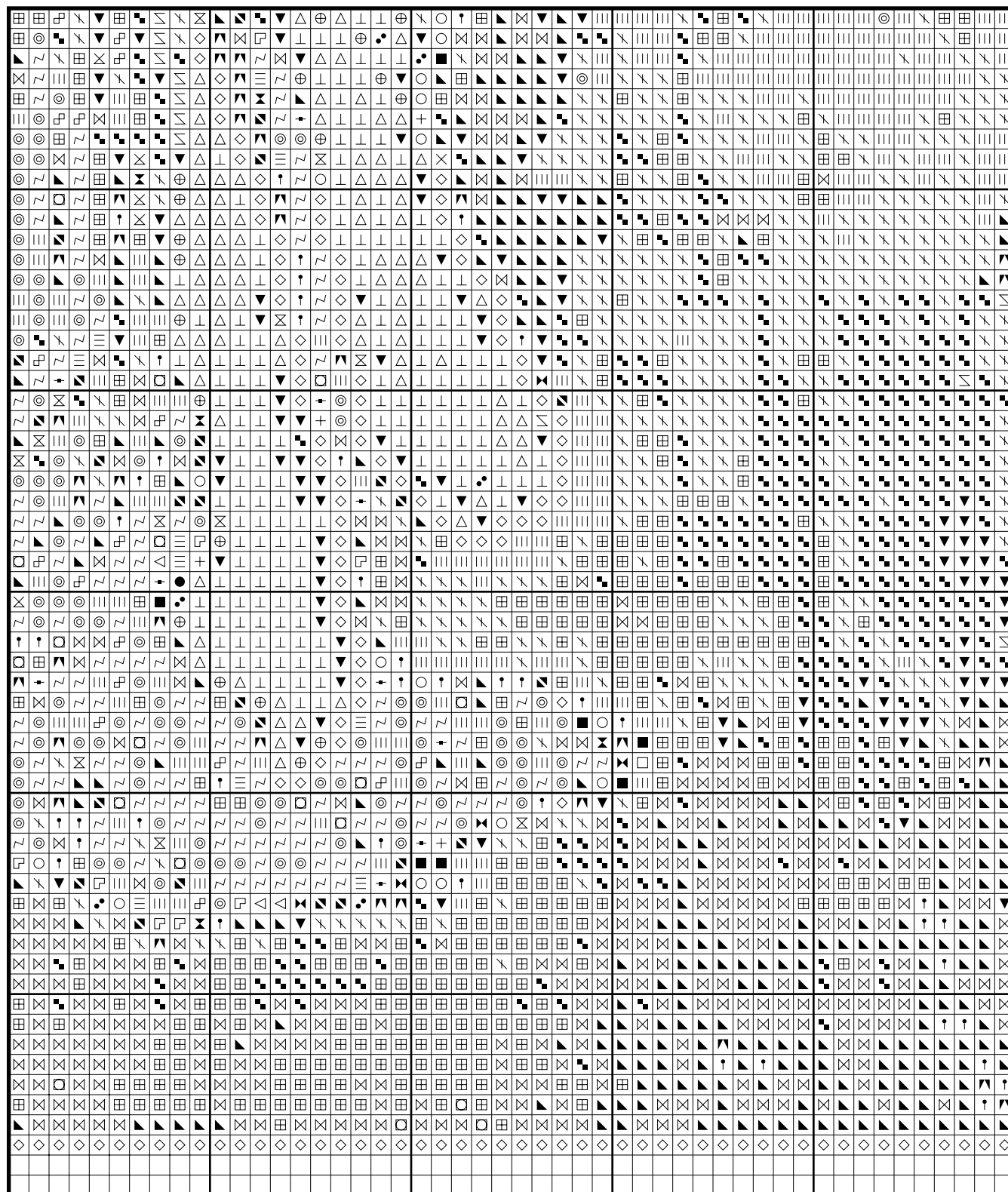
* Pattern is for personal use only and is not to be sold, copied or redistributed in any form. Copyright of Artec Cross Stitch.

* 121 stitches wide by 234 stitches high, 35 colours used

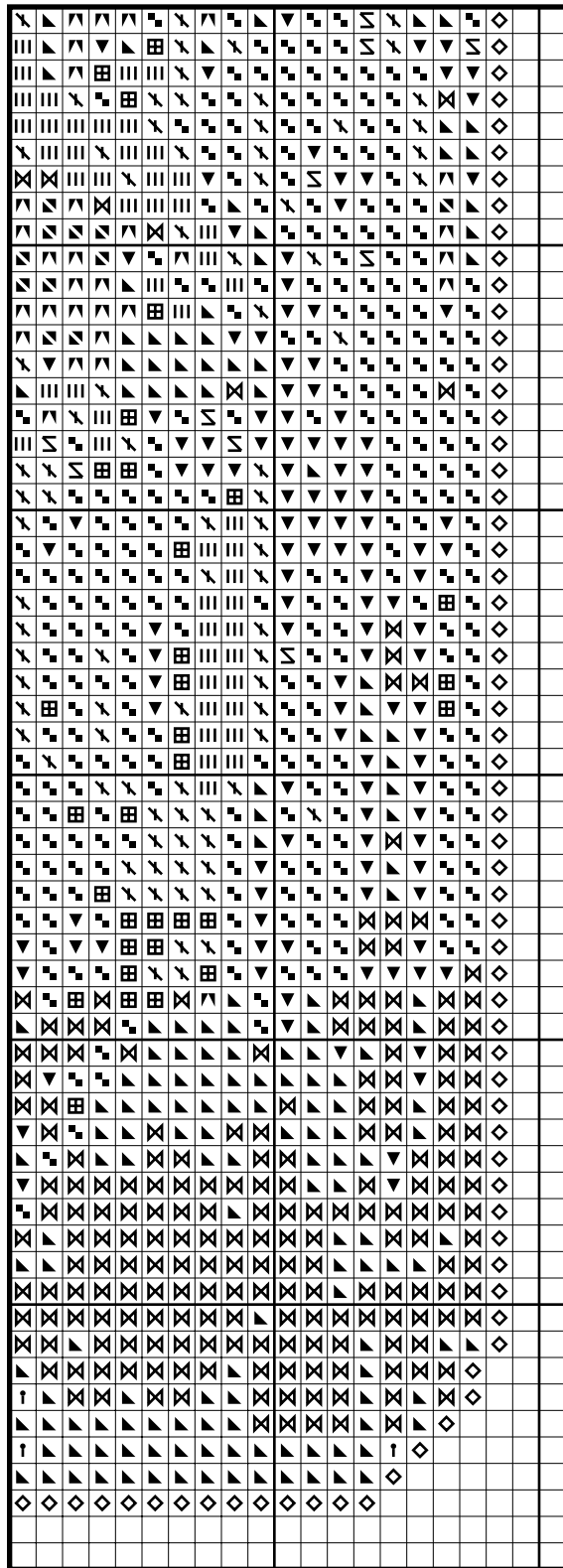
Spring by Alphonse Mucha



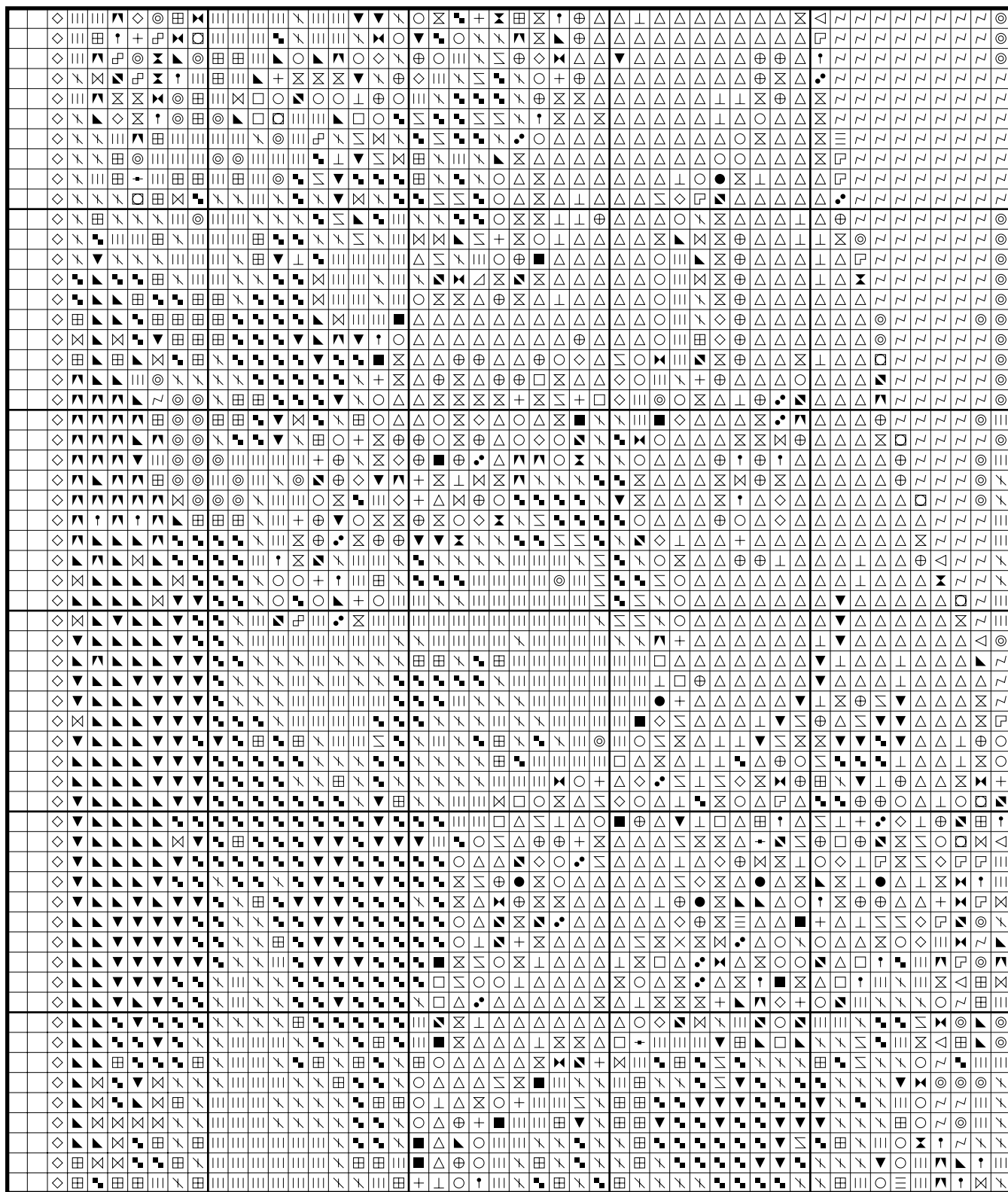
Spring by Alphonse Mucha



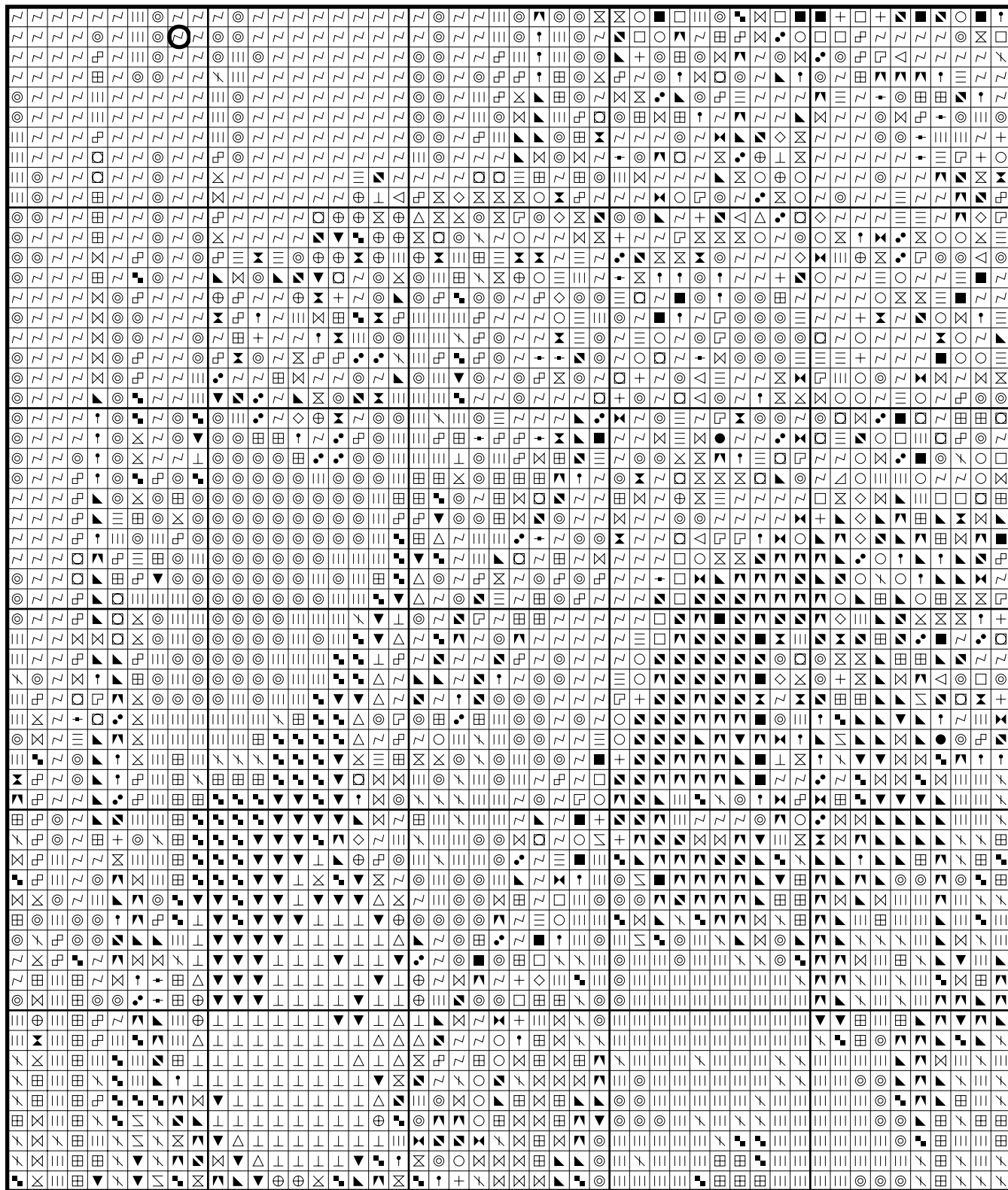
Spring by Alphonse Mucha



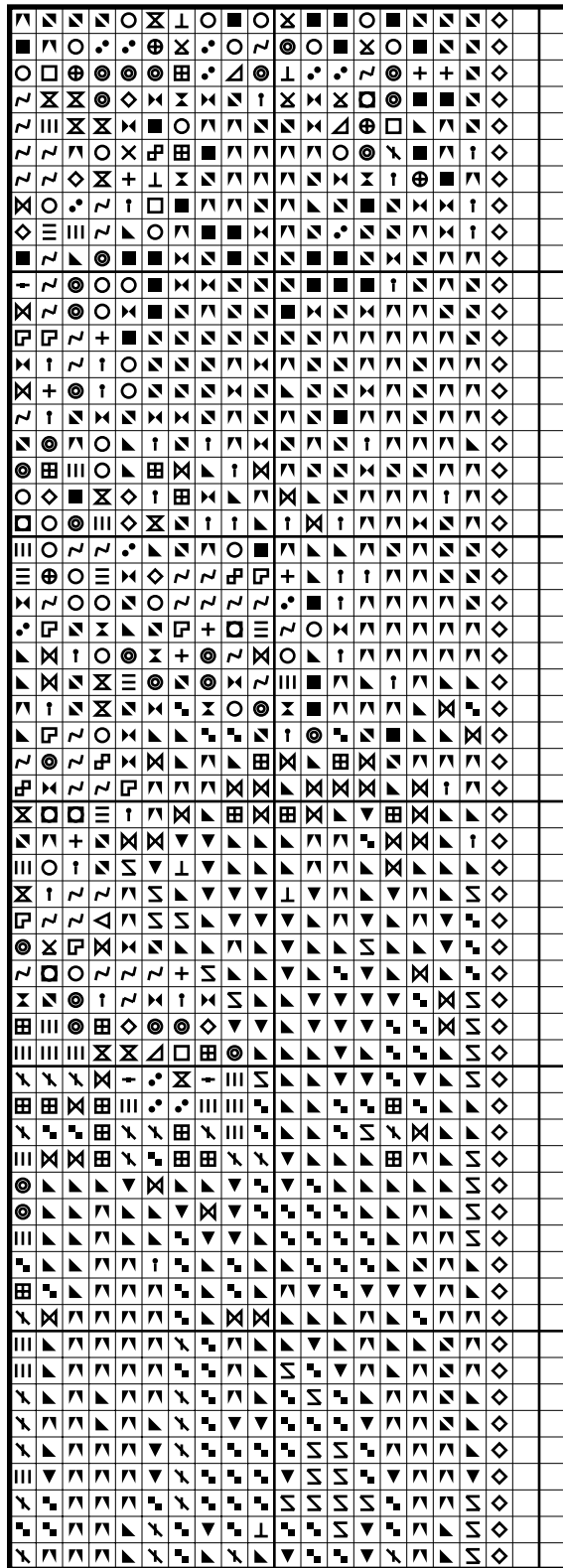
Spring by Alphonse Mucha



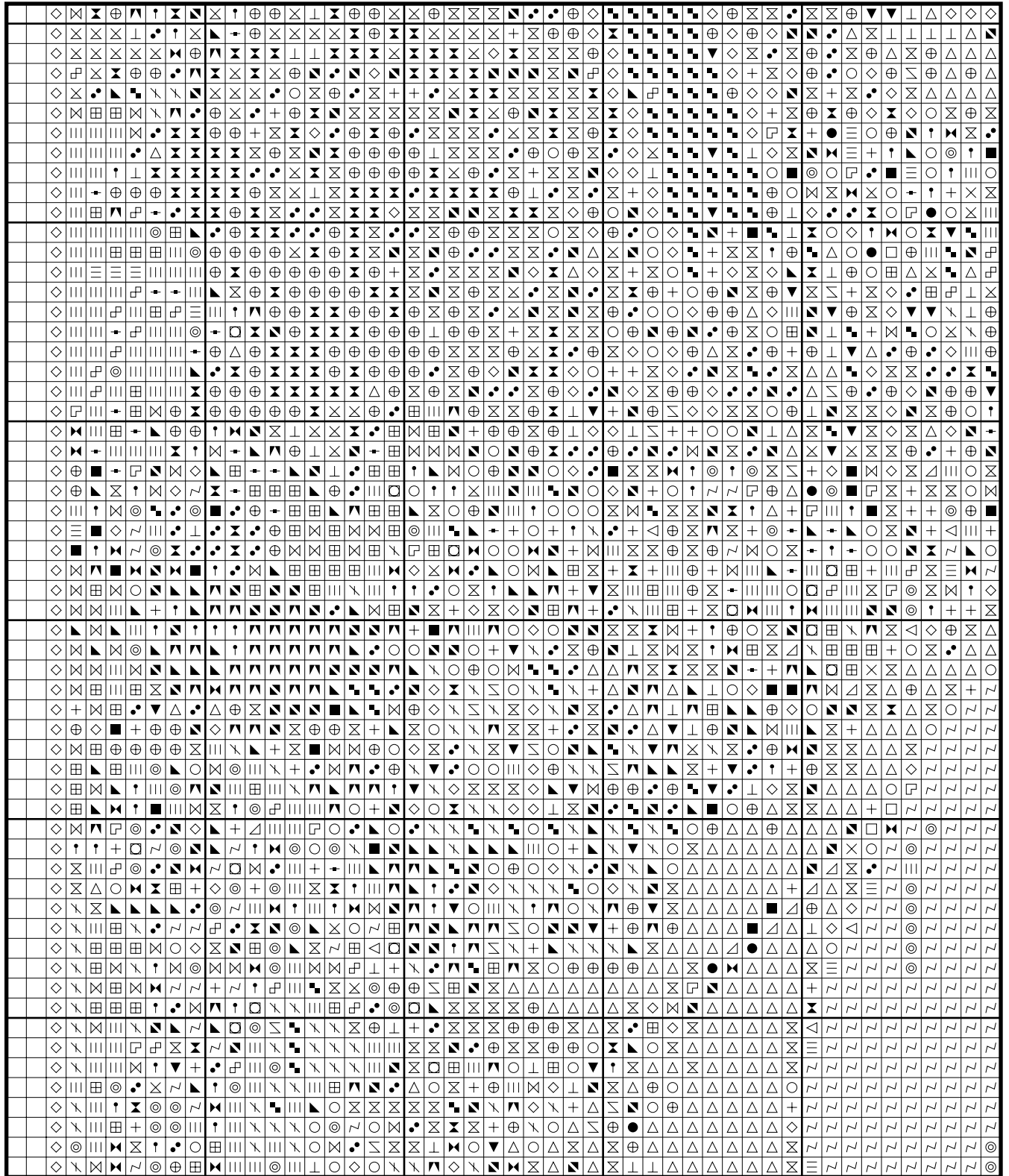
Spring by Alphonse Mucha



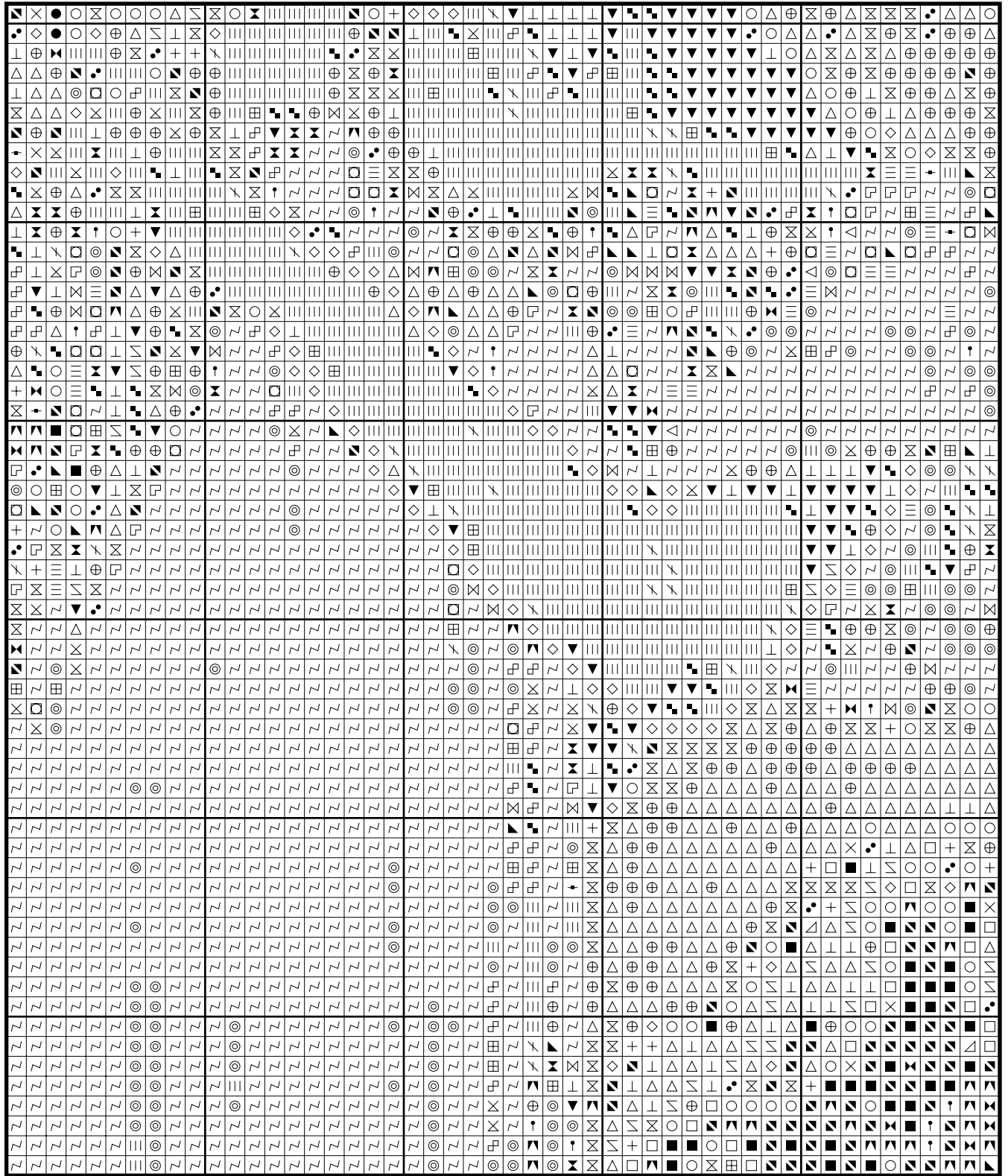
Spring by Alphonse Mucha



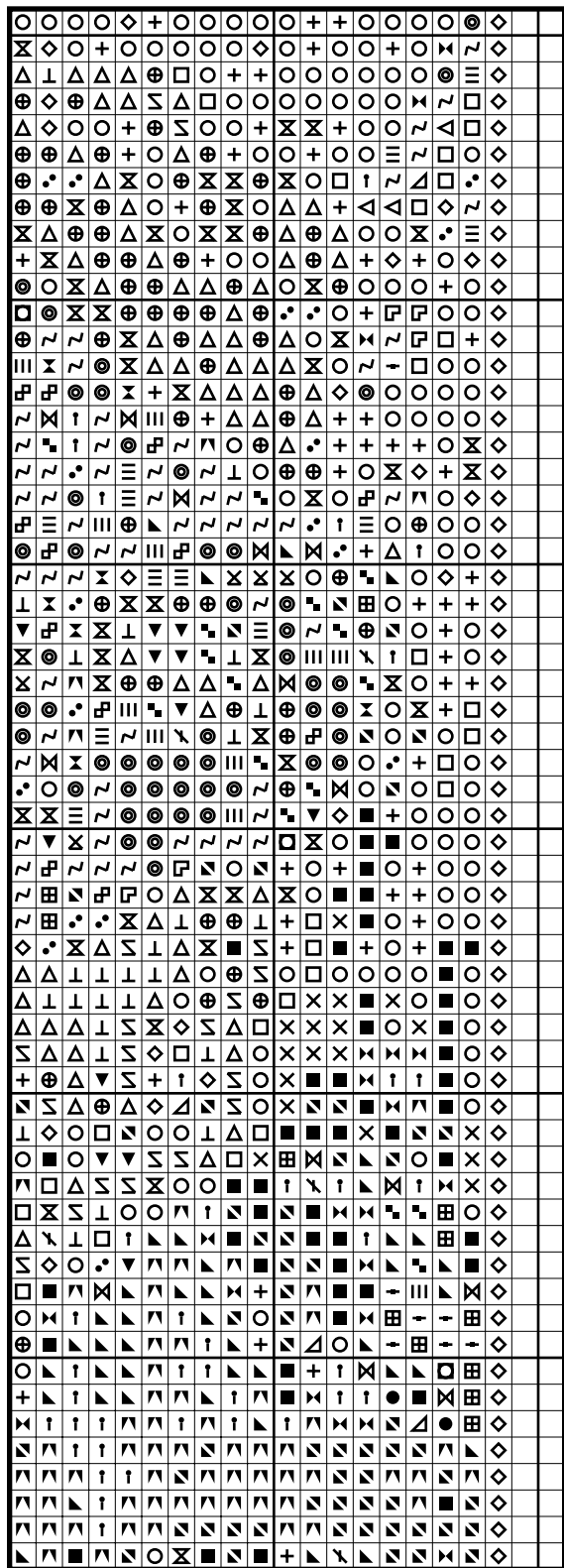
Spring by Alphonse Mucha



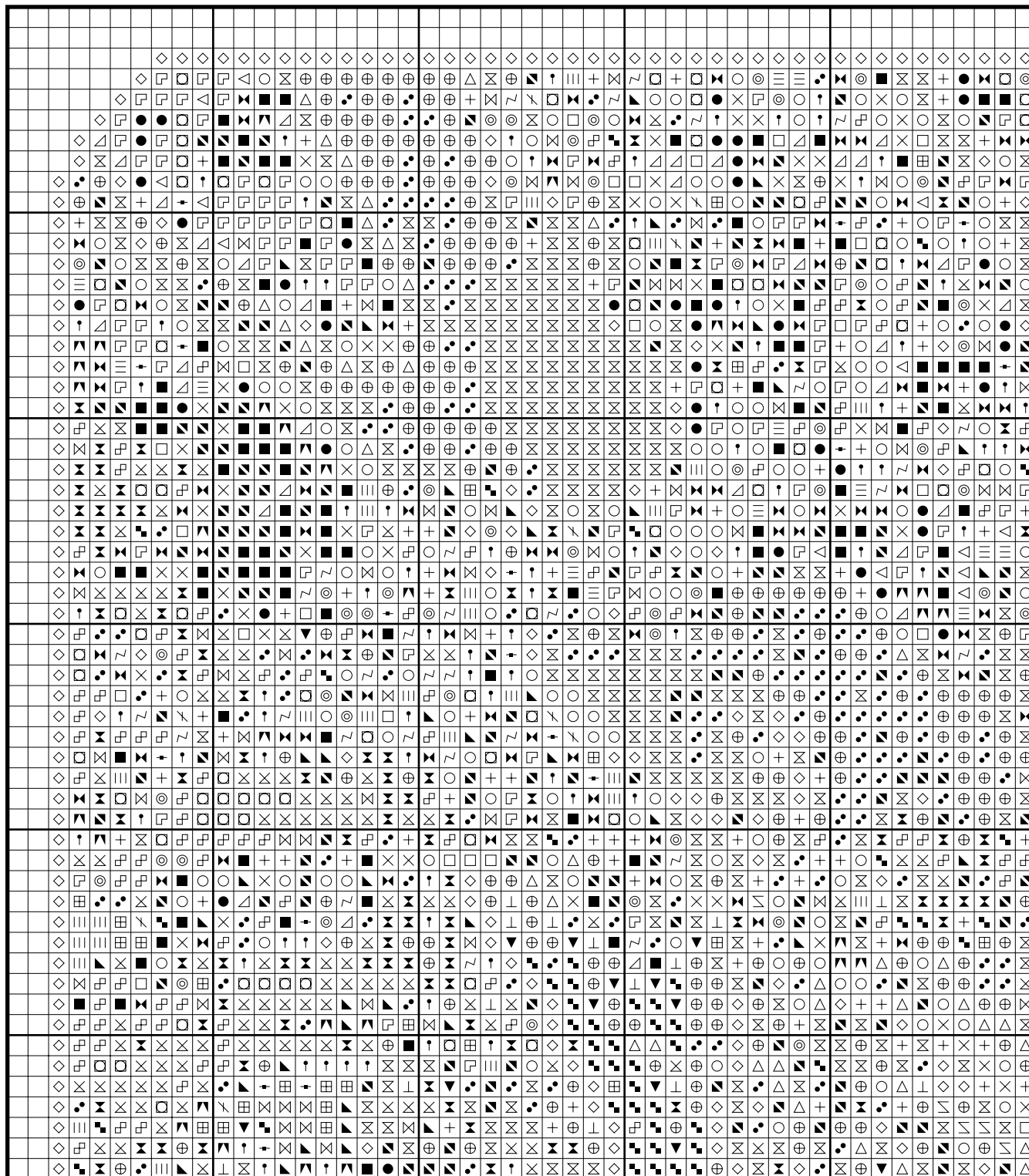
Spring by Alphonse Mucha



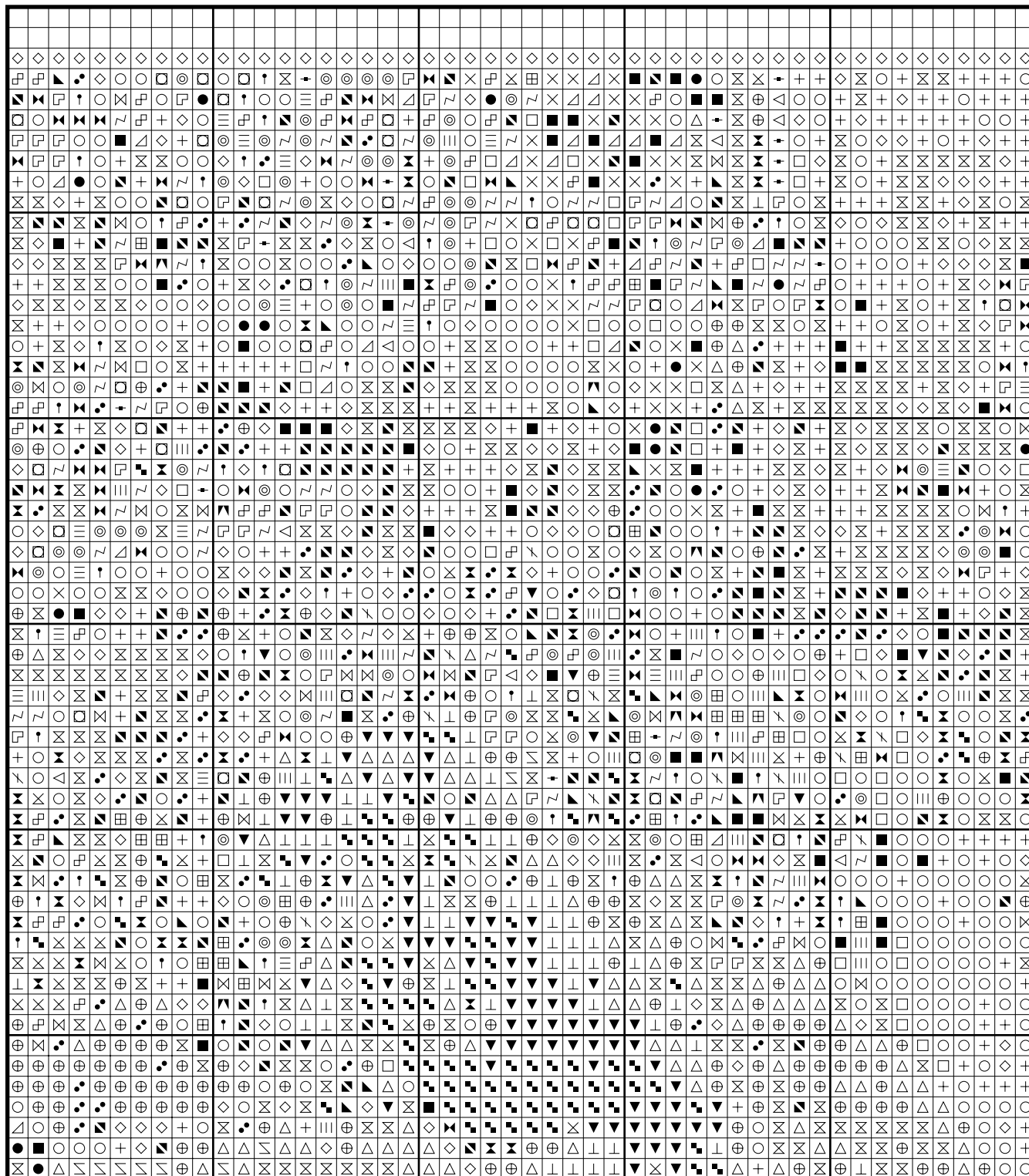
Spring by Alphonse Mucha



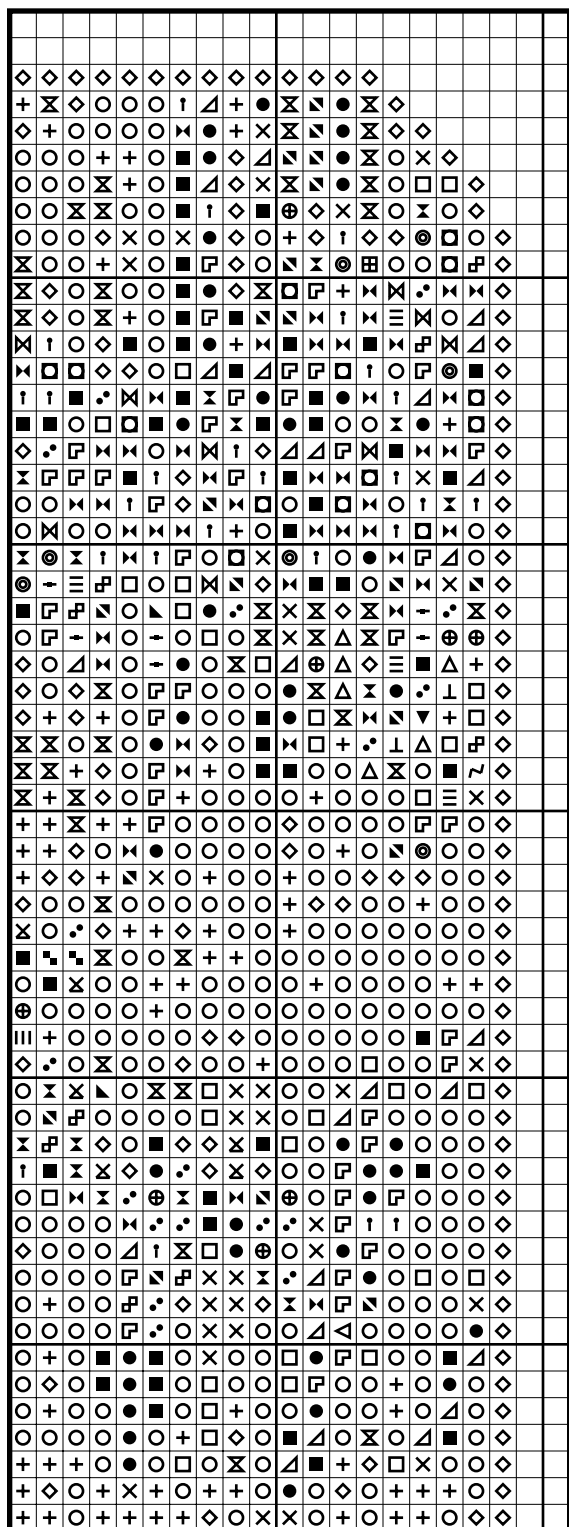
Spring by Alphonse Mucha



Spring by Alphonse Mucha



Spring by Alphonse Mucha



Color distribution - springbymucha

- DMC 936 Very Dark Avocado Green: 158 stitches
- DMC 310 Black: 201 stitches
- DMC 938 Ultra Dark Coffee Brown: 1429 stitches
- DMC 898 Very Dark Coffee Brown: 646 stitches
- DMC 3781 Dark Mocha Brown: 442 stitches
- DMC 3362 Dark Pine Green: 103 stitches
- DMC 3363 Medium Pine Green: 122 stitches
- DMC 975 Dark Golden Brown: 1350 stitches
- DMC 300 Very Dark Mahogany: 1353 stitches
- DMC 869 Very Dark Hazelnut Brown: 957 stitches
- DMC 610 Dark Drab Brown: 361 stitches
- DMC 434 Light Brown: 540 stitches
- DMC 782 Dark Topaz: 984 stitches
- DMC 973 Bright Canary: 201 stitches
- DMC 3829 Very Dark Old Gold: 651 stitches
- DMC 370 Medium Mustard: 480 stitches
- DMC 976 Medium Golden Brown: 1181 stitches
- DMC 680 Dark Old Gold: 421 stitches
- DMC 3828 Hazelnut Brown: 1307 stitches
- DMC 613 Very Light Drab Brown: 1573 stitches
- DMC 3854 Medium Autumn Gold: 560 stitches
- DMC 3827 Pale Golden Brown: 801 stitches
- DMC 437 Light Tan: 306 stitches
- DMC 725 Topaz: 1586 stitches
- DMC 3023 Light Brown Gray: 57 stitches
- DMC 451 Dark Shell Gray: 269 stitches
- DMC 3864 Light Mocha Beige: 250 stitches
- DMC 3013 Light Khaki Green: 114 stitches
- DMC 834 Very Light Golden Olive: 1468 stitches
- DMC 3856 Ultra Very Light Mahogany: 386 stitches
- DMC 743 Medium Yellow: 1258 stitches
- DMC 727 Very Light Topaz: 1690 stitches
- DMC 3042 Light Antique Violet: 160 stitches
- DMC 3047 Light Yellow Beige: 1095 stitches
- DMC 3865 Winter White: 2386 stitches

* Generally 30 stitches will use 1 metre of DMC floss.

PATTERN LAYOUT		
11	12	13
8	9	10
5	6	7
2	3	4

