

Winter by Alphonse Mucha

☒	DMC 500 Very Dark Blue Green
◻	DMC 938 Ultra Dark Coffee Brown
◉	DMC 3781 Dark Mocha Brown
+	DMC 367 Dark Pistachio Green
■	DMC 3815 Dark Celadon Green
▲	DMC 912 Light Emerald Green
●	DMC 3816 Celadon Green
⊠	DMC 900 Dark Burnt Orange
◇	DMC 300 Very Dark Mahogany
▣	DMC 632 Ultra Very Dark Desert Sand
⊞	DMC 781 Very Dark Topaz
◉	DMC 434 Light Brown
⊕	DMC 782 Dark Topaz
◻	DMC 471 Very Light Avocado Green
⬆	DMC 3829 Very Dark Old Gold
↑	DMC 704 Bright Chartreuse
△	DMC 3826 Golden Brown
⊠	DMC 733 Medium Olive Green
▶	DMC 783 Medium Topaz
⊞	DMC 3828 Hazelnut Brown
⊥	DMC 3854 Medium Autumn Gold
▼	DMC 3827 Pale Golden Brown
⊠	DMC 3046 Medium Yellow Beige
■	DMC 725 Topaz
◁	DMC 993 Very Light Aquamarine
◻	DMC 913 Medium Nile Green
◻	DMC 368 Light Pistachio Green
+	DMC 3782 Light Mocha Brown
⊞	DMC 729 Medium Old Gold
◻	DMC 966 Medium Baby Green
⊞	DMC 504 Very Light Blue Green
⊞	DMC 834 Very Light Golden Olive
≡	DMC 945 Tawny
⊞	DMC 743 Medium Yellow
~	DMC 744 Pale Yellow
⊞	DMC 564 Very Light Jade
≡	DMC 3823 Ultra Pale Yellow
⊞	DMC 3865 Winter White

* To work out the size of the finished article, take the number of stitches and divide it by the count of your fabric (e.g 14,16,18 count aida etc) to get the size in inches. Times it by 2.5 to get centimetres.

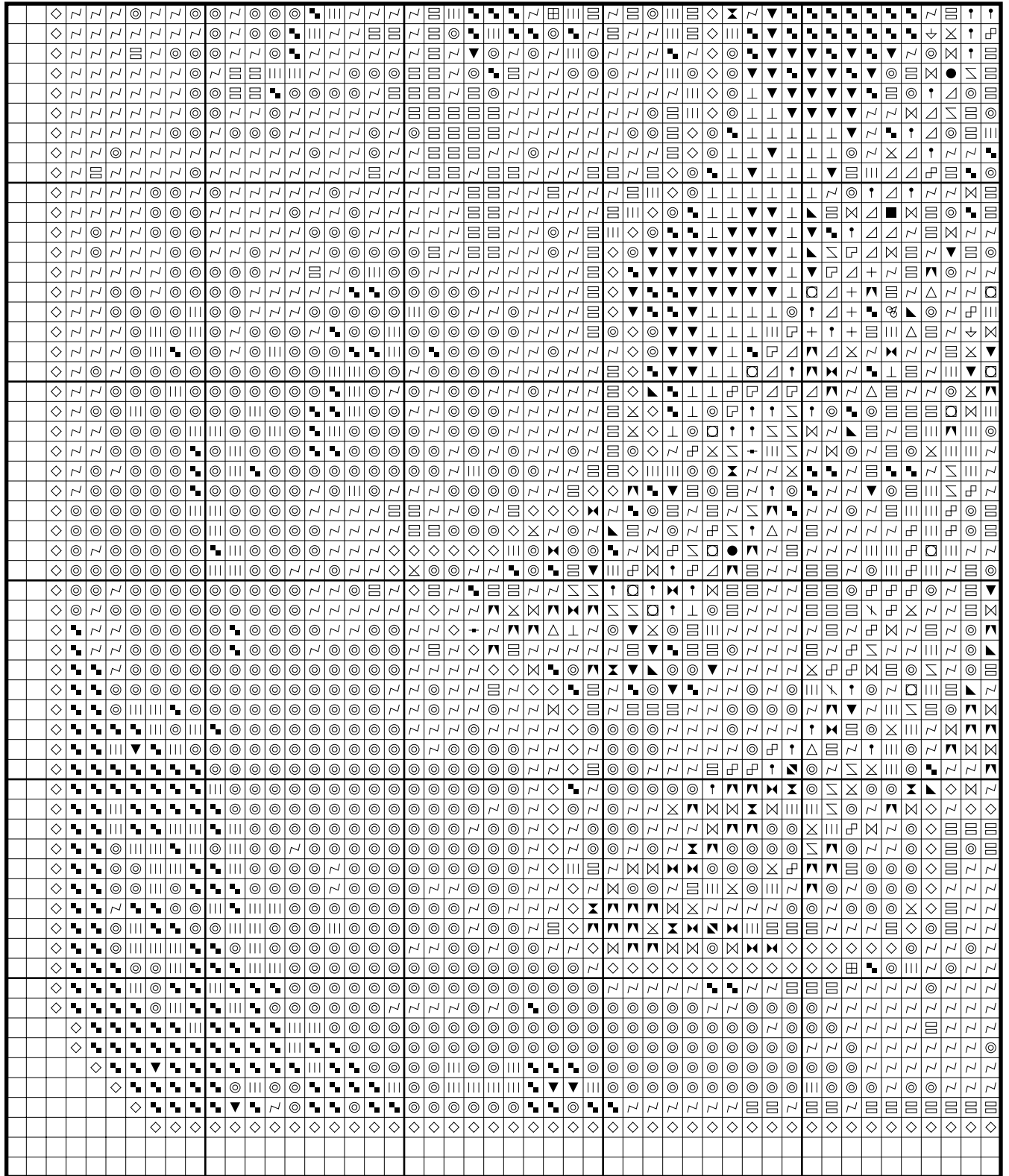
* PLEASE NOTE: Our patterns are printed in a grid showing 10 x 10 stitches in each box. You may notice that the pages that run vertical have a maximum number of 9 rows at the top or bottom of a page. You are not missing a row or rows of stitches, this is the way our patterns print. It allows us to have larger print for your symbols.

* You should begin at the centre of the pattern which has been marked by a circle for you. To find the centre of the pattern it is just a matter of counting the vertical and horizontal stitches and divide them by half. Where the two points meet that is the centre.

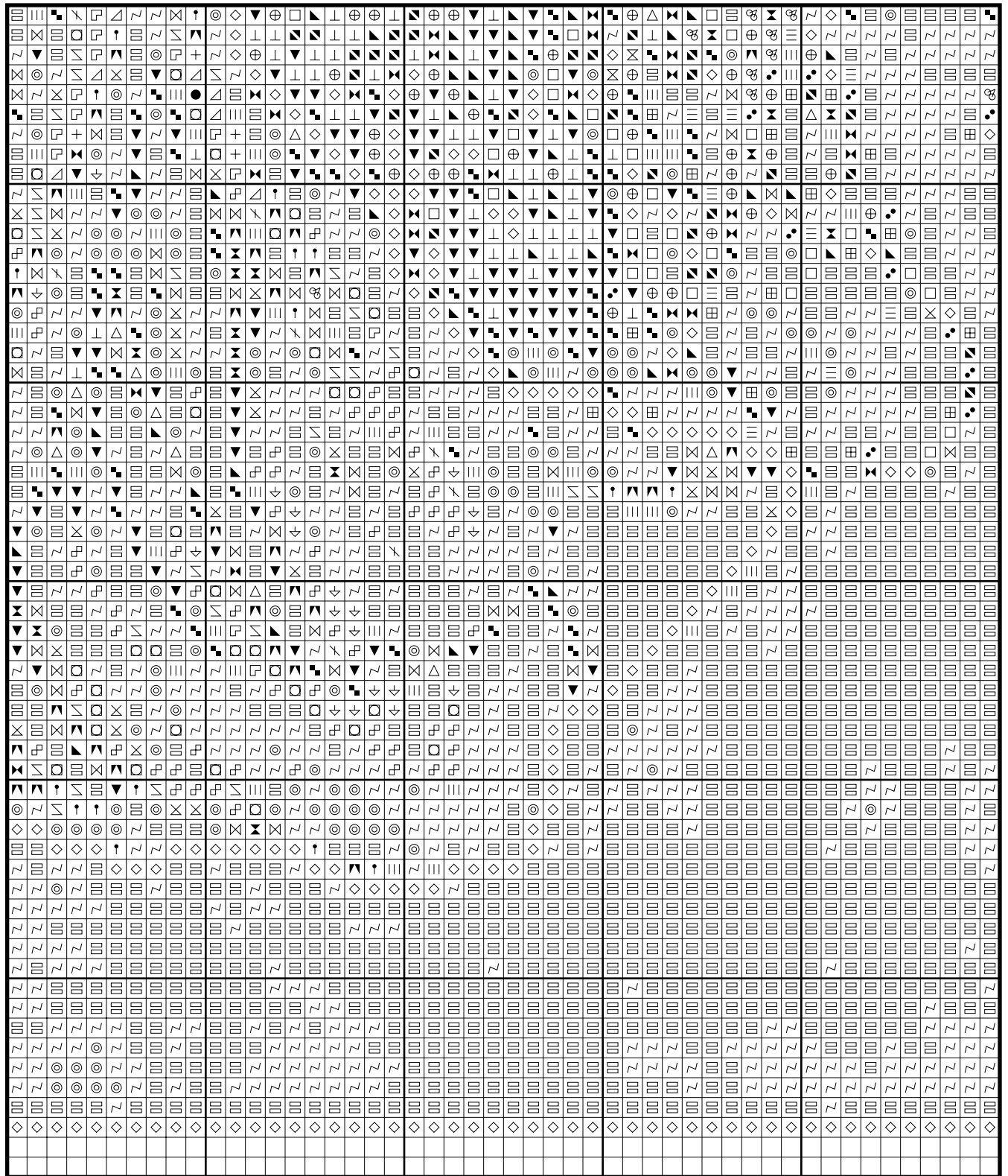
* Pattern is for personal use only and is not to be sold, copied or redistributed in any form. Copyright of Artec Cross Stitch.

* 121 stitches wide by 234 stitches high, 38 colours used

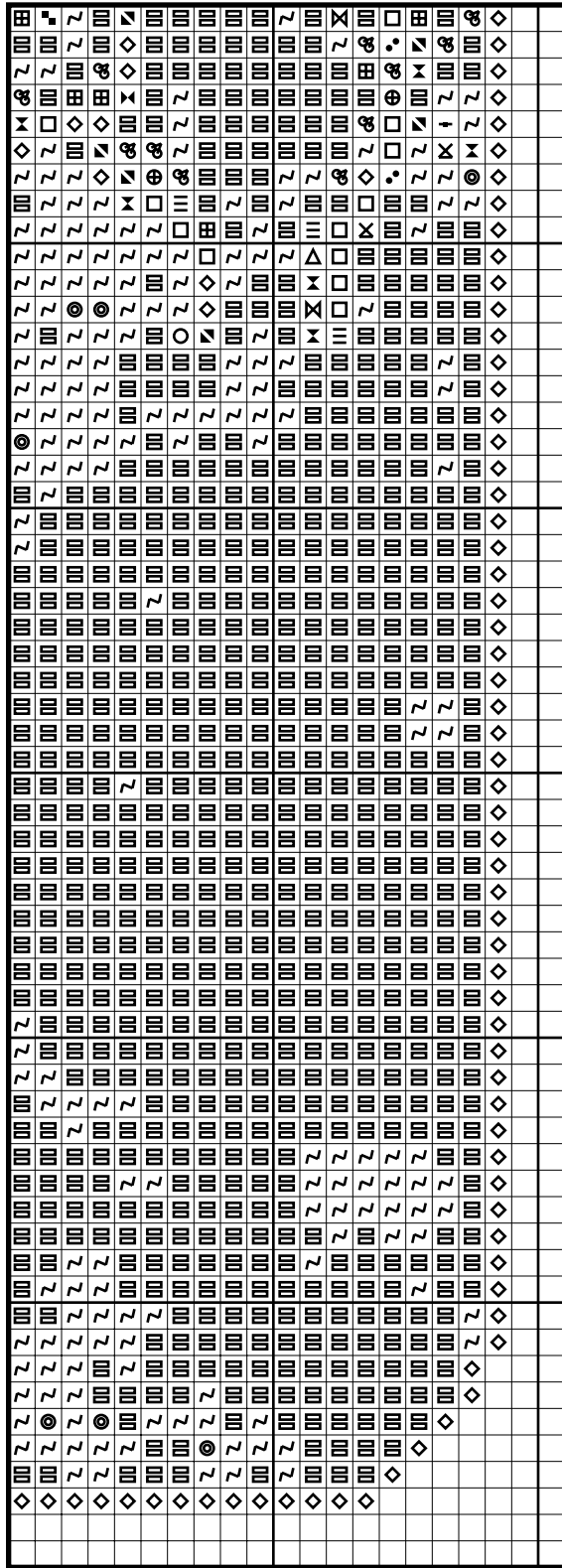
Winter by Alphonse Mucha



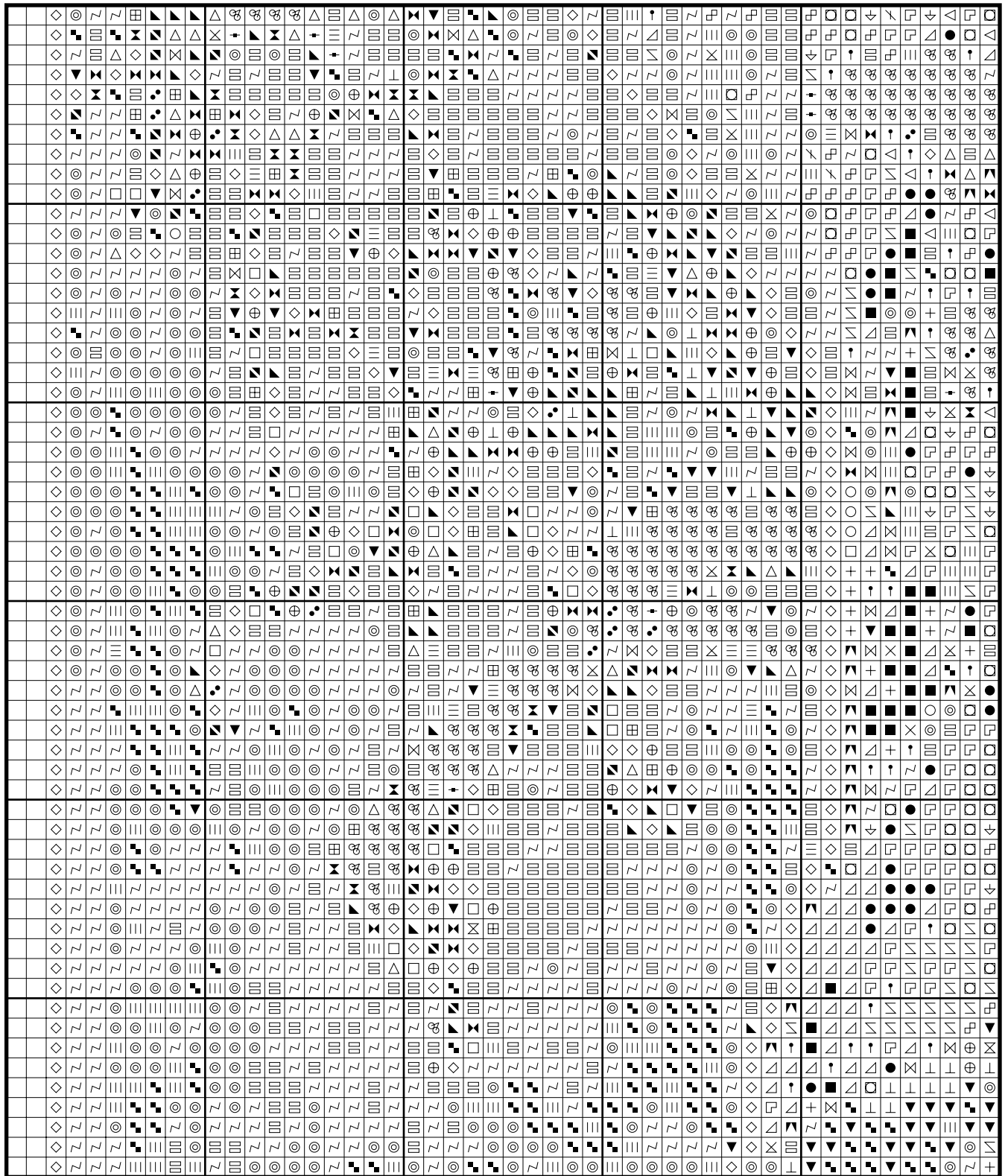
Winter by Alphonse Mucha



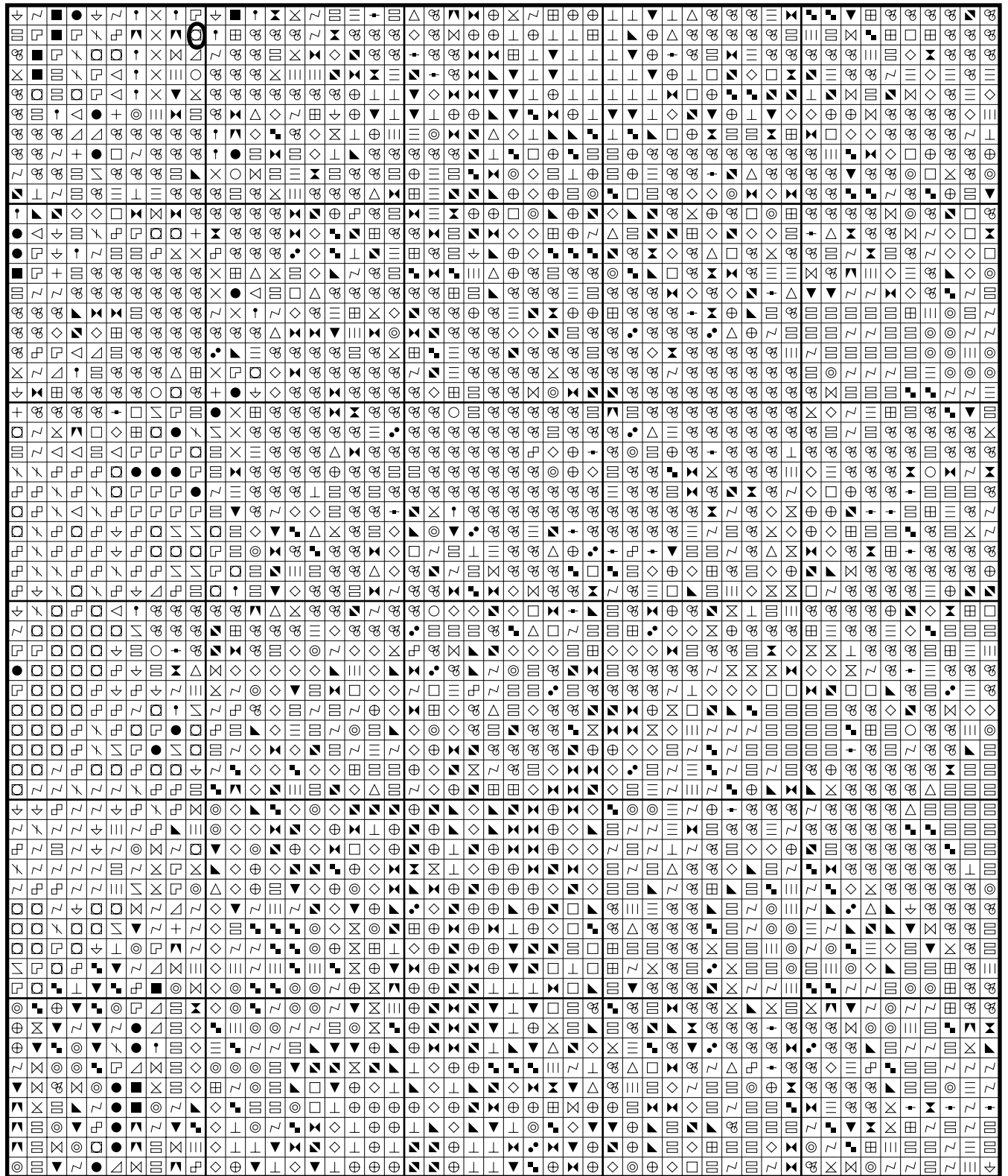
Winter by Alphonse Mucha



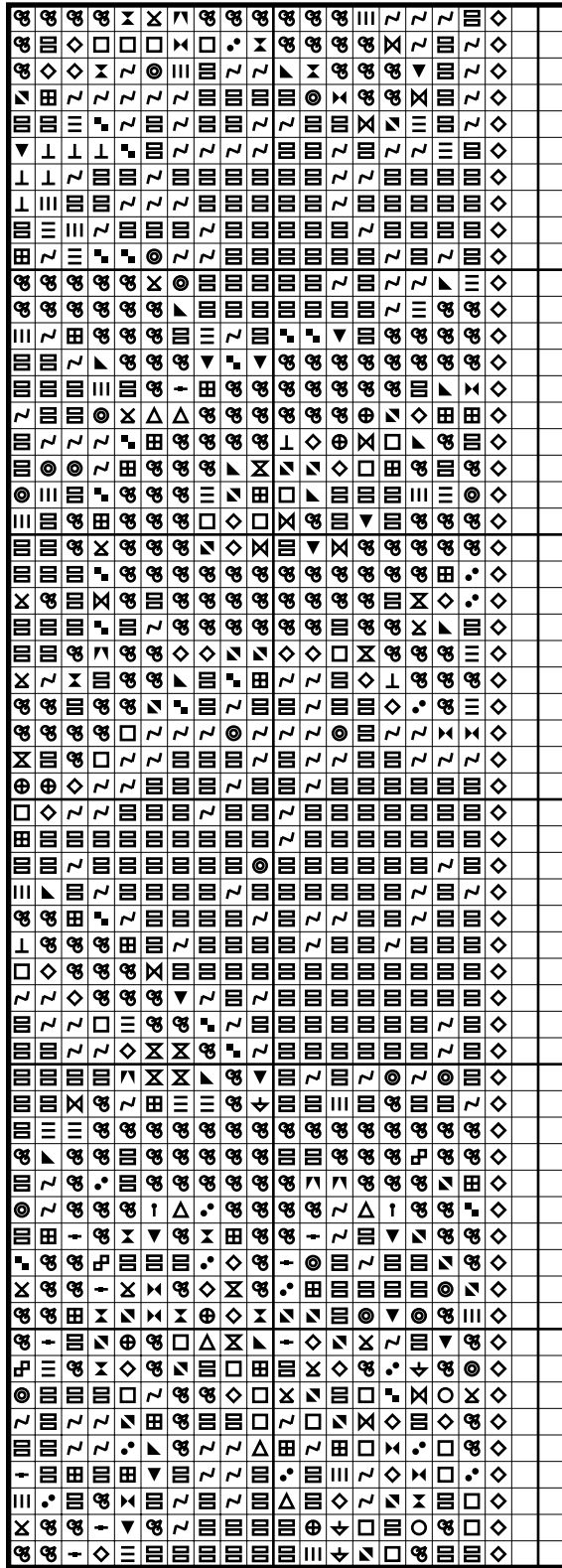
Winter by Alphonse Mucha



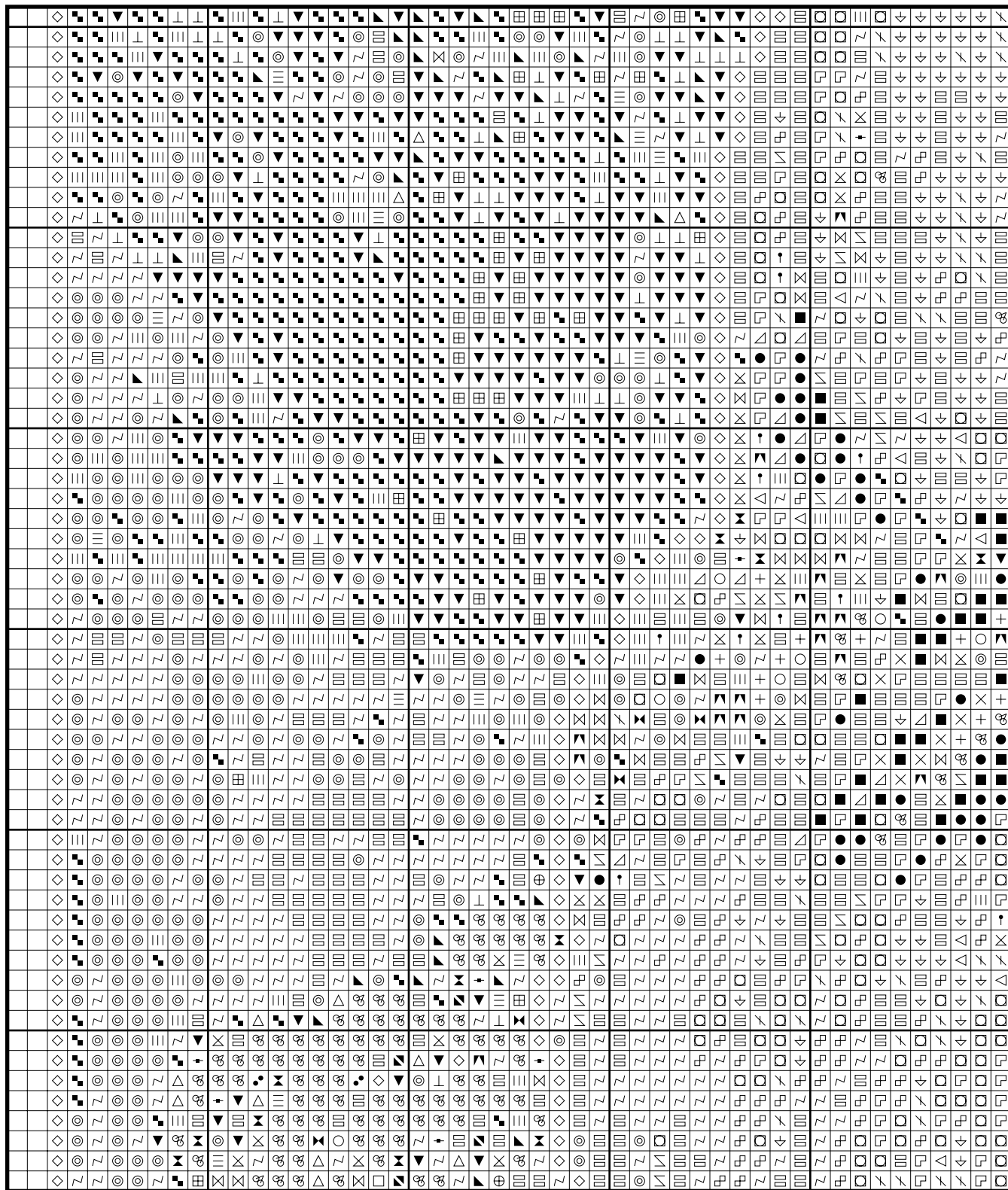
Winter by Alphonse Mucha



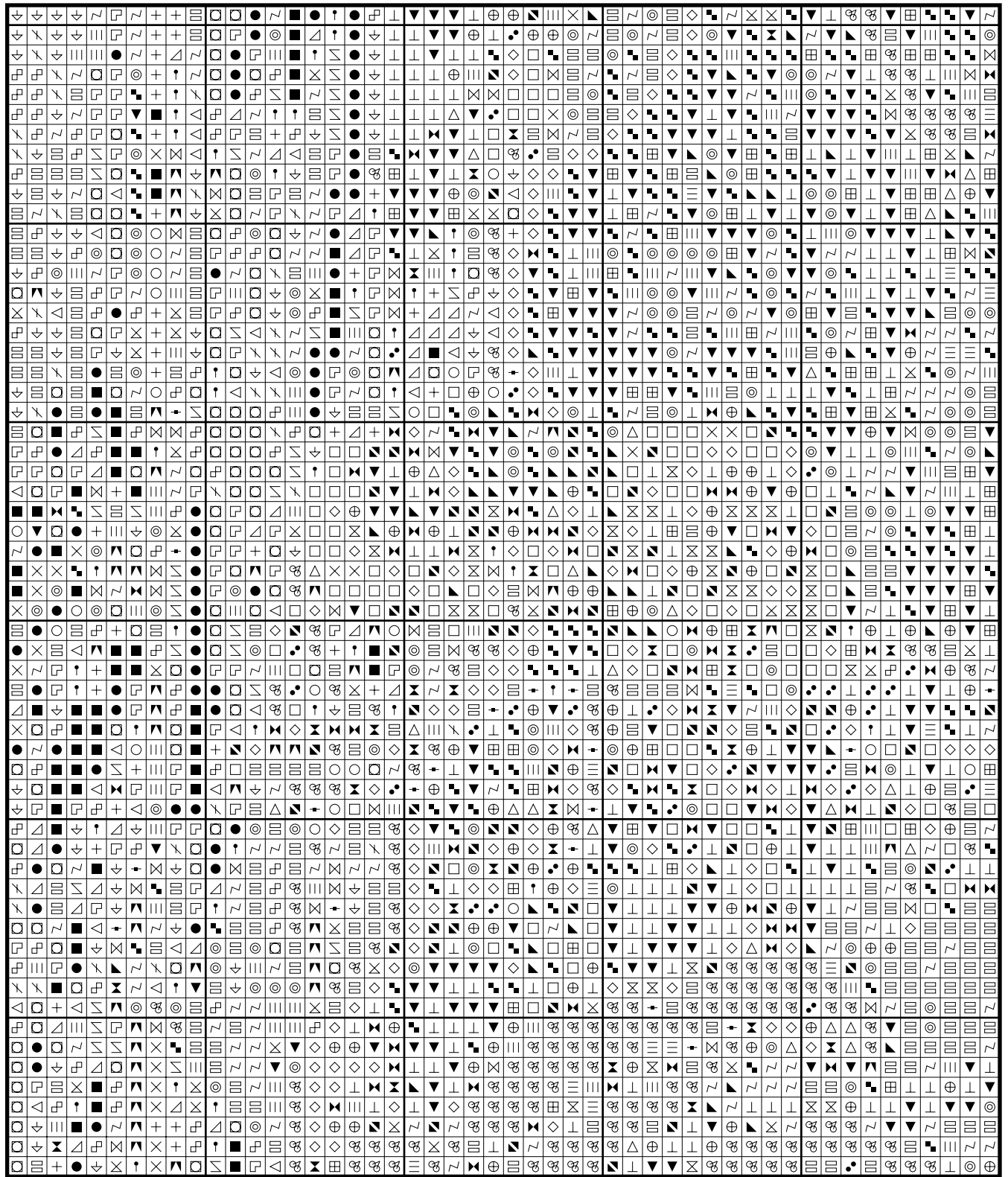
Winter by Alphonse Mucha



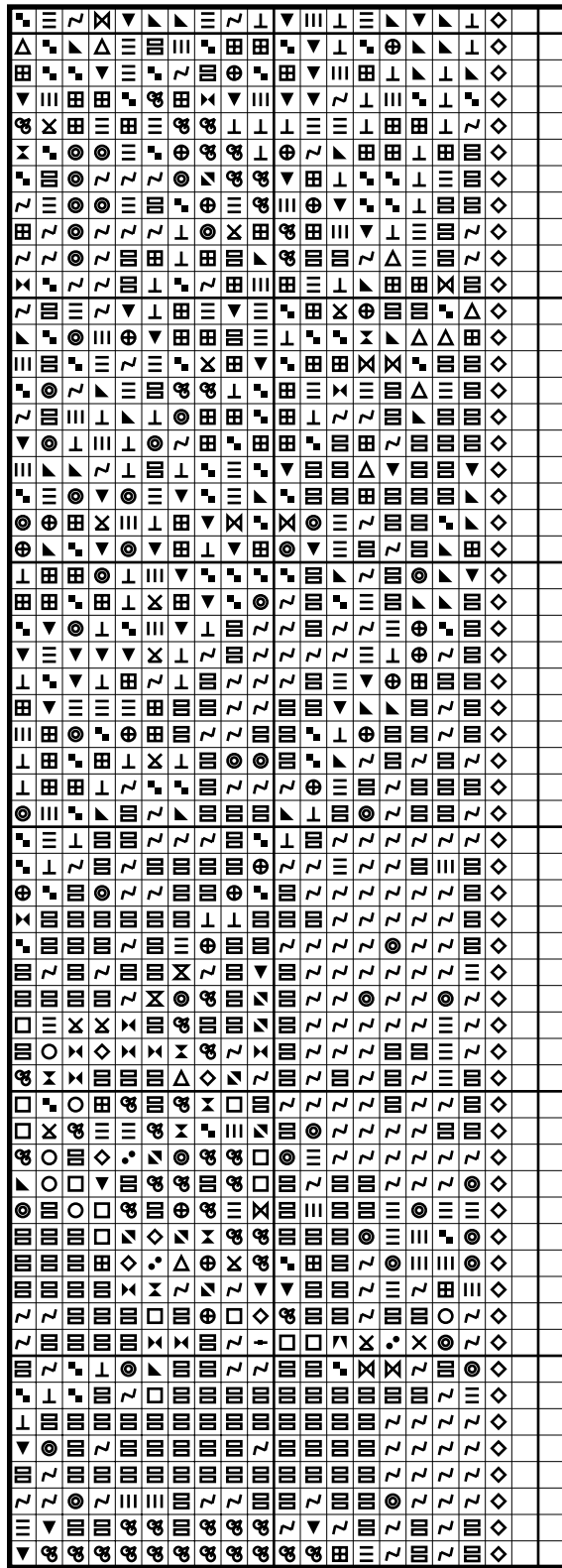
Winter by Alphonse Mucha



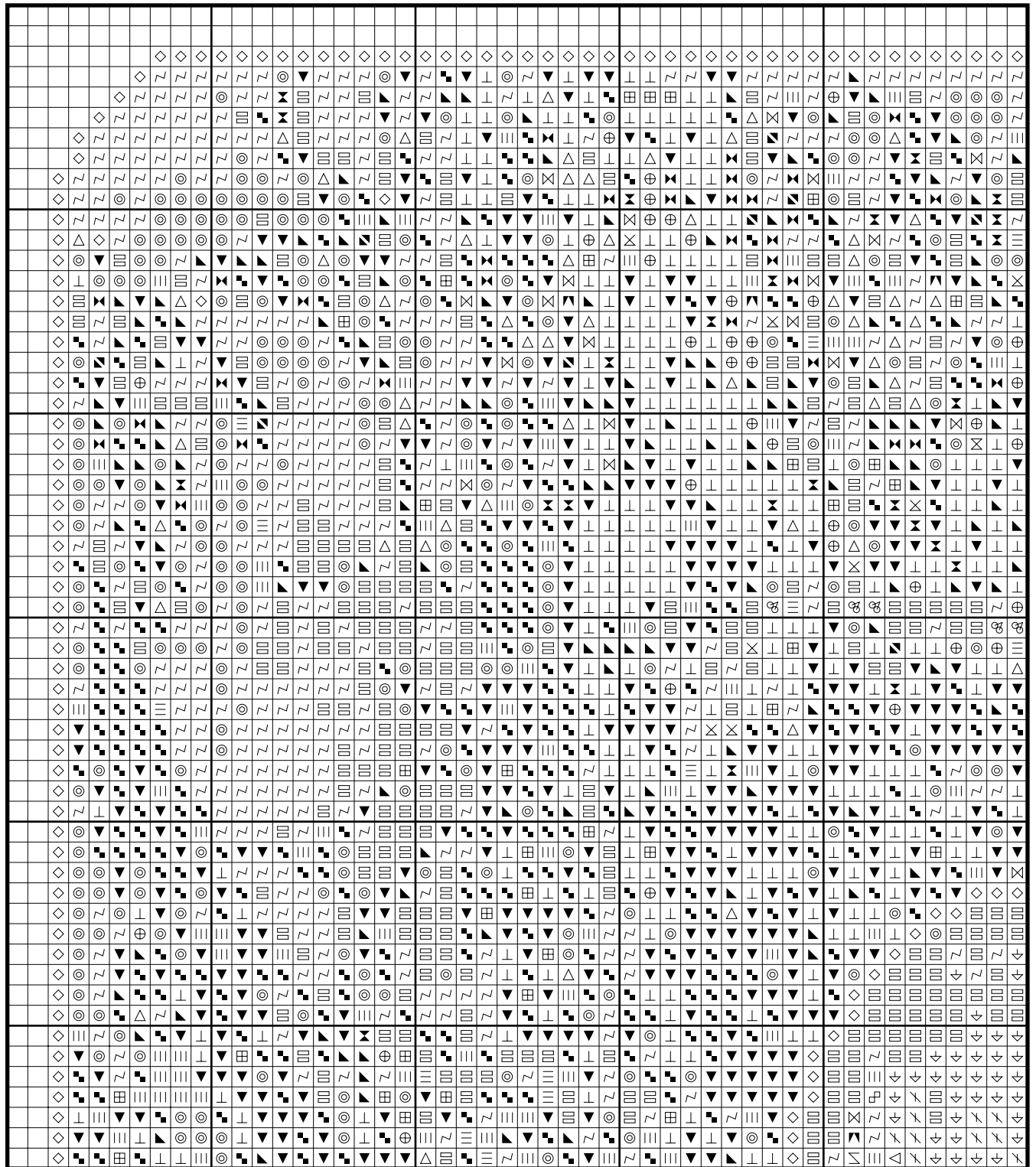
Winter by Alphonse Mucha



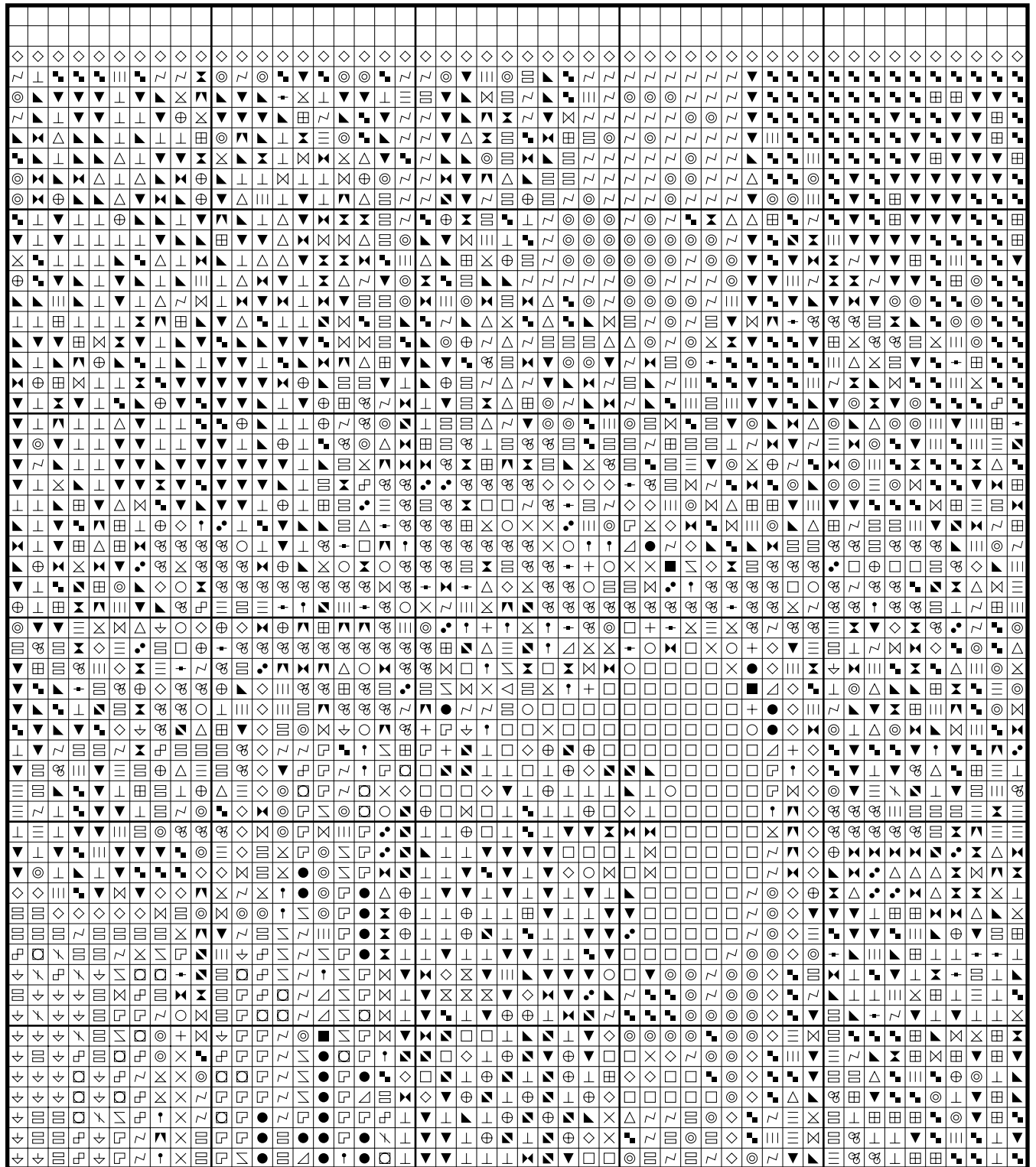
Winter by Alphonse Mucha



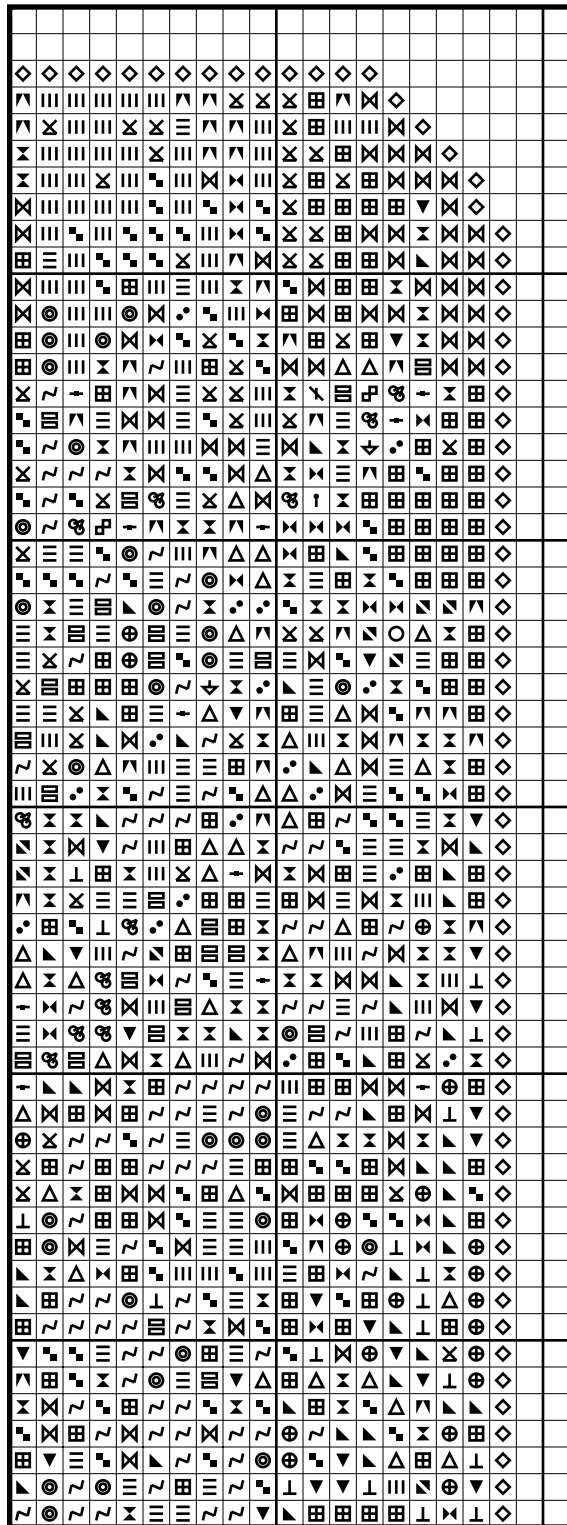
Winter by Alphonse Mucha



Winter by Alphonse Mucha



Winter by Alphonse Mucha



Color distribution - winterbymucha

- DMC 500 Very Dark Blue Green: 67 stitches
- DMC 938 Ultra Dark Coffee Brown: 405 stitches
- DMC 3781 Dark Mocha Brown: 77 stitches
- DMC 367 Dark Pistachio Green: 92 stitches
- DMC 3815 Dark Celadon Green: 134 stitches
- DMC 912 Light Emerald Green: 146 stitches
- DMC 3816 Celadon Green: 181 stitches
- DMC 900 Dark Burnt Orange: 81 stitches
- DMC 300 Very Dark Mahogany: 1564 stitches
- DMC 632 Ultra Very Dark Desert Sand: 382 stitches
- DMC 781 Very Dark Topaz: 457 stitches
- DMC 434 Light Brown: 139 stitches
- DMC 782 Dark Topaz: 472 stitches
- DMC 471 Very Light Avocado Green: 188 stitches
- DMC 3829 Very Dark Old Gold: 263 stitches
- DMC 704 Bright Chartreuse: 182 stitches
- DMC 3826 Golden Brown: 313 stitches
- DMC 733 Medium Olive Green: 324 stitches
- DMC 783 Medium Topaz: 661 stitches
- DMC 3828 Hazelnut Brown: 421 stitches
- DMC 3854 Medium Autumn Gold: 1007 stitches
- DMC 3827 Pale Golden Brown: 1615 stitches
- DMC 3046 Medium Yellow Beige: 318 stitches
- DMC 725 Topaz: 1963 stitches
- DMC 993 Very Light Aquamarine: 62 stitches
- DMC 913 Medium Nile Green: 302 stitches
- DMC 368 Light Pistachio Green: 412 stitches
- DMC 3782 Light Mocha Brown: 117 stitches
- DMC 729 Medium Old Gold: 553 stitches
- DMC 966 Medium Baby Green: 371 stitches
- DMC 504 Very Light Blue Green: 136 stitches
- DMC 834 Very Light Golden Olive: 830 stitches
- DMC 945 Tawny: 324 stitches
- DMC 743 Medium Yellow: 2414 stitches
- DMC 744 Pale Yellow: 3646 stitches
- DMC 564 Very Light Jade: 315 stitches
- DMC 3823 Ultra Pale Yellow: 4380 stitches
- DMC 3865 Winter White: 1532 stitches

* Generally 30 stitches will use 1 metre of DMC floss.

PATTERN LAYOUT		
11	12	13
8	9	10
5	6	7
2	3	4

