

HEART SACHET

design by VICKI SEVER

Just the right size to tuck into a drawer or suitcase, Vicki Sever's heart sachet is worked in mitered squares that build one upon the other. Work fourteen nearly identical squares, stuff the piece with your favorite dried flowers or potpourri (Vicki used lavender), sew the top closed, and you're done. It's a good thing that a single skein of yarn will make several sachets—once you've made one, you'll want to make another!

Finished Size About 3½" (9 cm) square.

Yarn Koigu Premium Merino (100% merino; 175 yd [160 m]/50 g); #P314 multi-colored, 1 skein will make several sachets.

Needles Size 1 (2.25 mm). Adjust needle size if necessary to obtain the correct gauge.

Notions Stitch holder; tapestry needle; about 1 oz (28 g) dried lavender flowers.

Gauge 18 sts and 22 rows = 2" (5 cm) in St st; one piece knitted according to Chart A = 1½" (3.8 cm) square.

Notes

All charts begin with a wrong-side (WS) row.

Upon completion of each chart, break yarn and place remaining two stitches onto a holder.

All stitches are picked up with right side (RS) facing.

Knit the first stitch of each row through the back loop and slip the last stitch of each row purlwise with yarn in front to create an even chain selvage edge from which to pick up stitches for adjacent squares.

Weave in tails as you pick up stitches along chain selvage edges by twisting the tail over the top of the working yarn for five or six stitches.



Joe Coca

Heart

Square 1: Using the backward loop method (see below), CO 22 sts. Work Rows 1–20 of Chart A. Break yarn. Place rem 2 sts on holder.

Square 2: With RS facing, pick up and knit 22 sts along CO edge of Square 1. Work Rows 1–20 of Chart A. Break yarn. Place rem 2 sts on holder.

Square 3: Using the backward loop method, CO 12 sts, then, with RS facing and beg at CO edge and working towards point of Square 1, pick up and knit 10 sts along right edge of Square 1—22 sts. Work Rows 1–18 of Chart B.

Square 4: With RS facing and beg at point and working toward CO edge of Square 1, pick up and knit 10 sts along left edge of Square 1. Use the backward loop method to CO 12 sts—22 sts. Work Rows 1–18 of Chart B.

Square 5: With RS facing, pick up and knit 12 sts along CO edge of Square 4, then 10 sts along chain selvedge edge of Square 2—22 sts. Work Rows 1–18 of Chart B.

Square 6: With RS facing, pick up and knit 10 sts along left side of Square 2, then 12 sts along CO edge of Square 3—22 sts. Work Rows 1–18 of Chart B.

Square 7: With RS facing and beg at point of Square 3, pick up and knit 9 sts along left edge, knit the 2 held sts of Square 1, then pick up and knit 9 sts along right edge of Square 4—20 sts. Work Rows 1–16 of Chart C.

Square 8: With RS facing and beg at point of Square 4, pick up and knit 10 sts along edge of Square 4, then 10 sts along edge of Square 5—20 sts. Work Rows 1–16 of Chart C.

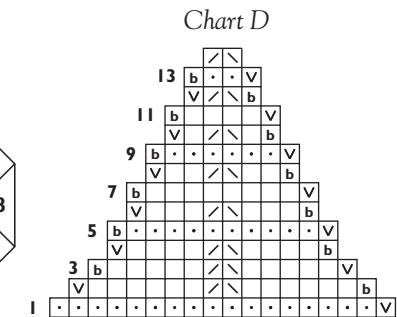
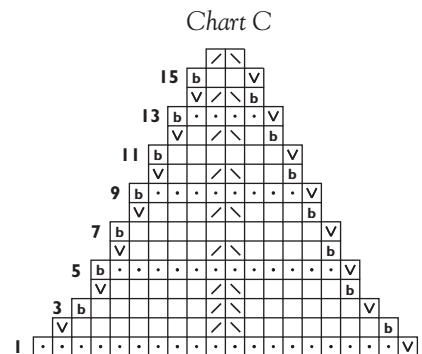
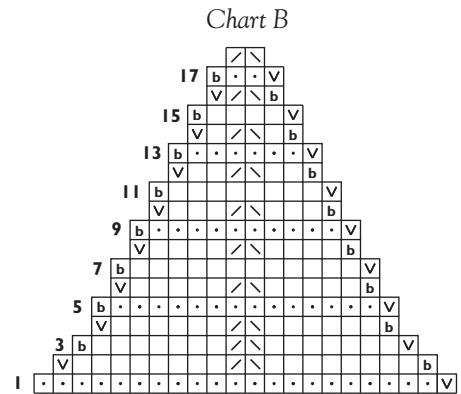
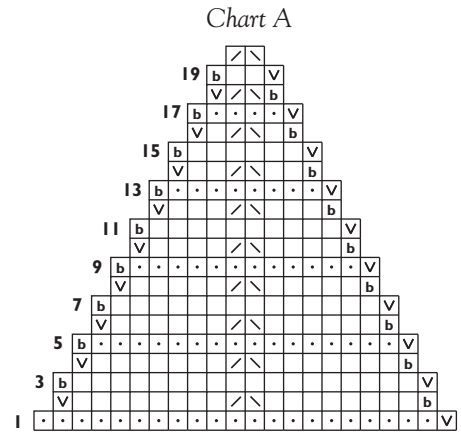
Square 9: Work as for Square 7, picking up sts along edges of Squares 5 and 6, and the 2 held sts from Square 2—20 sts. Work Rows 1–16 of Chart C.

Square 10: With RS facing and beg at point of Square 6, pick up and knit 10 sts along edge of Square 6, then 10 sts along edge of Square 3—20 sts. Work Rows 1–16 of Chart C.

Squares 11–14: Work as for Square 7, but pick up only 8 sts along edges of previous set of squares—18 sts. Work Rows 1–14 of Chart D.

Finishing

Weave in rem loose ends. With yarn threaded on a tapestry needle, sew top edge closed, leaving a small opening. Stuff with lavender flowers, then sew rem seam. ∞

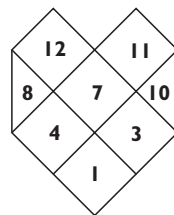


Backward Loop Cast-On

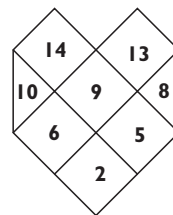
*Loop working yarn and place it on needle backward so that it doesn't unwind. Repeat from *.



Side 1



Side 2



□ k on RS; p on WS

• k on WS

∇ sl 1 wyf

▭ k1 tbl

∕ k2tog on RS; p2tog on WS

∇ ssk on RS; ssp on WS

VICKI SEVER lives in Oshkosh, Wisconsin.