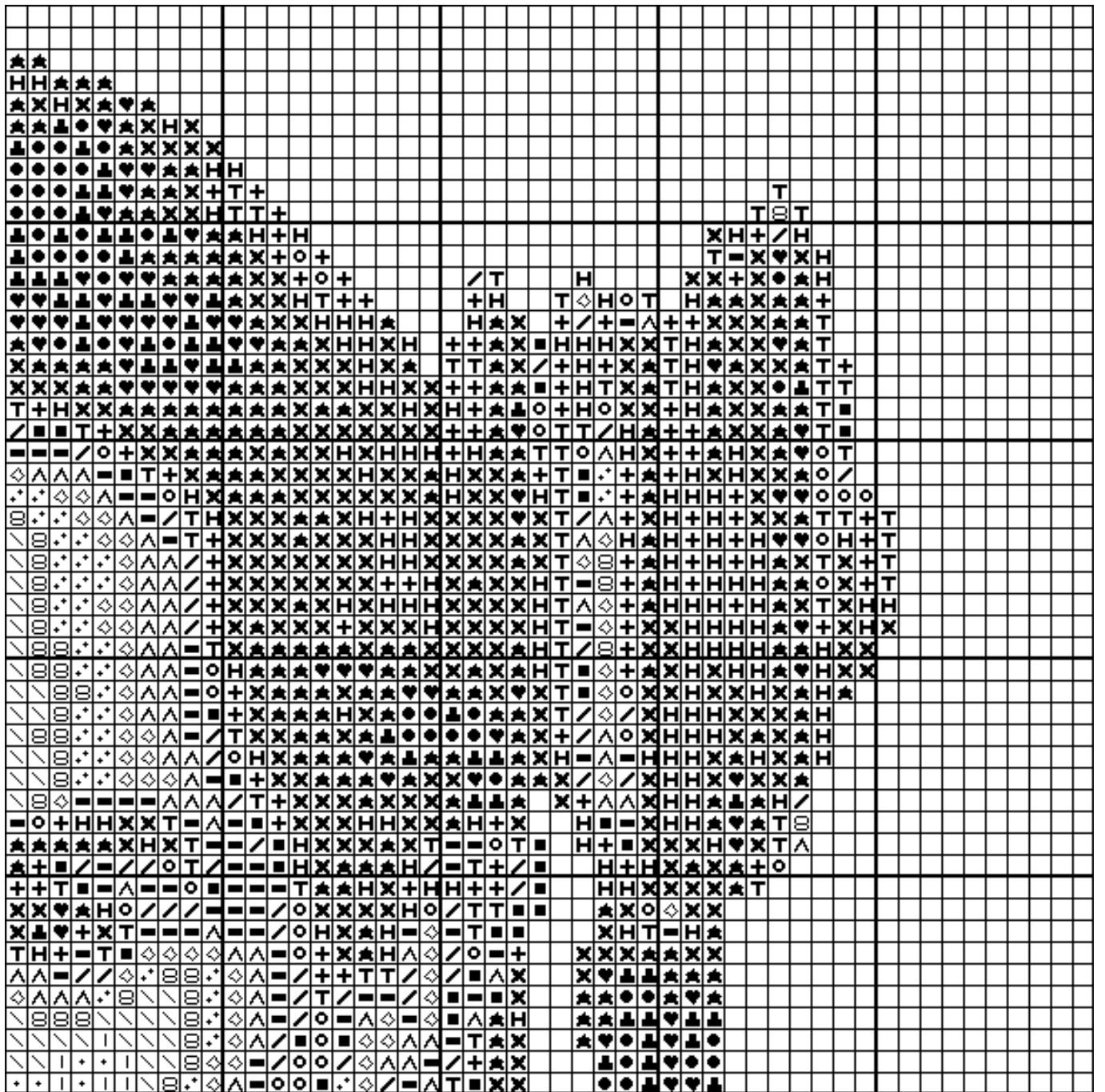
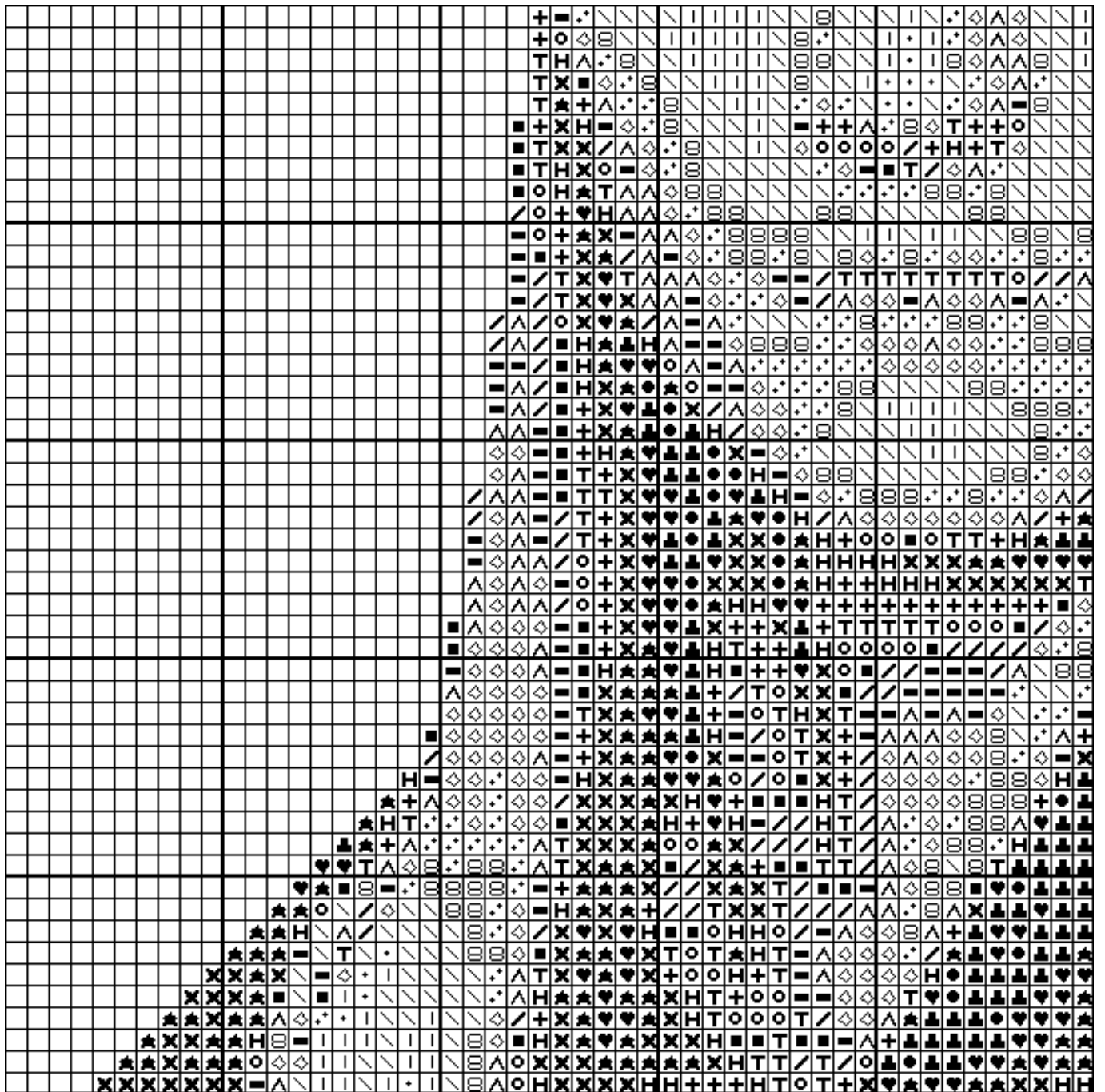


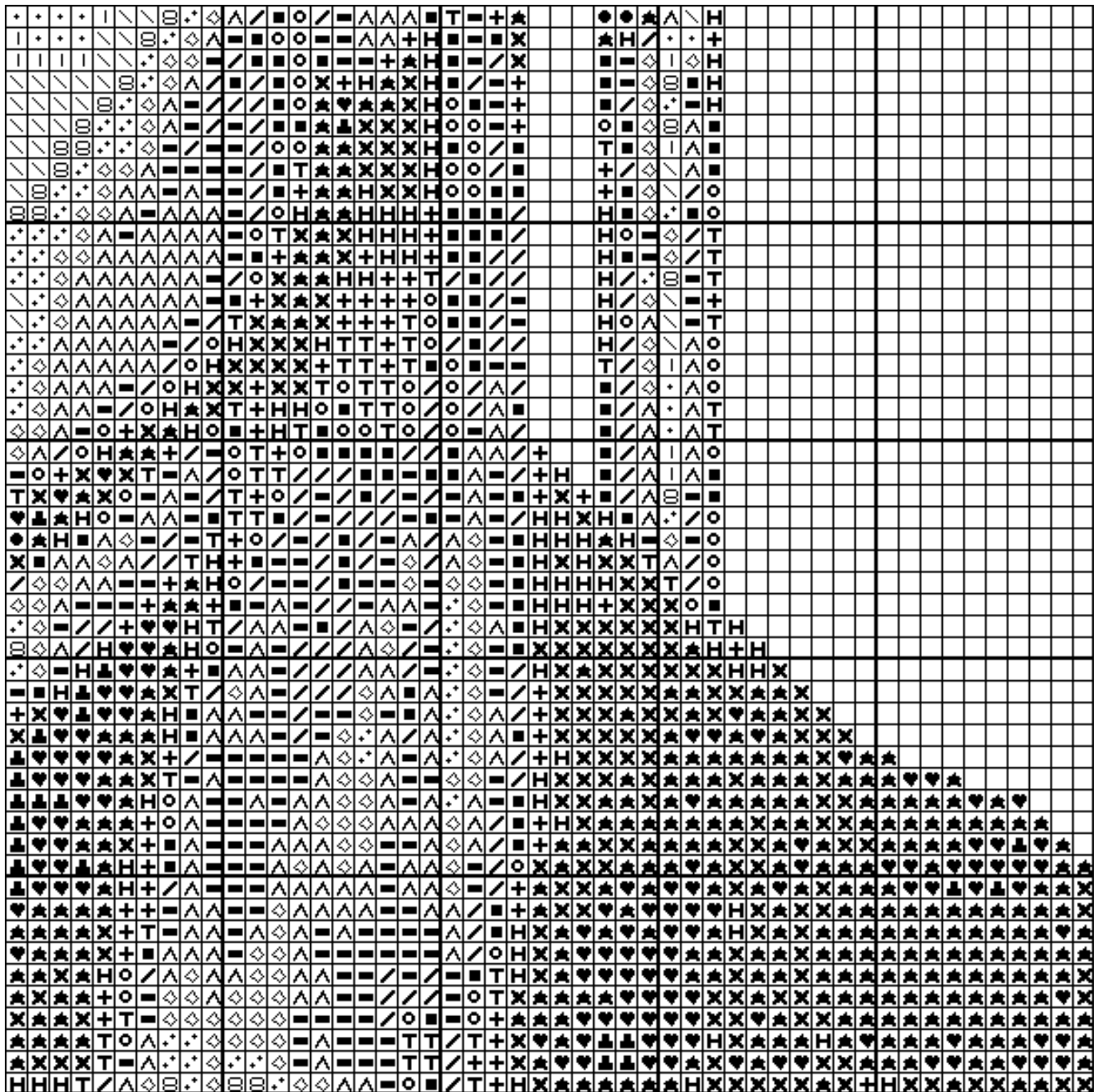
TOP LEFT



TOP RIGHT



BOTTOM LEFT



BOTTOM RIGHT

KEY AND THREAD INFORMATION

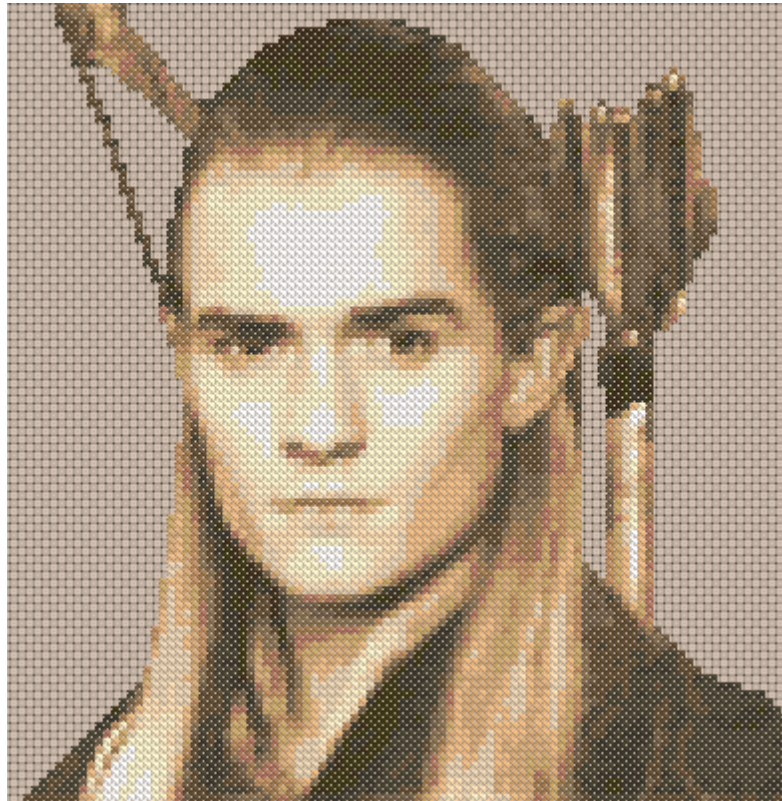
FINISHED DESIGN SIZE on 14 hpi Aida: 18 x 18 cms

STITCH COUNT: 100 X 100

DESIGN IS WORKED IN FULL CROSS STITCH USING 2 STRANDS OF FLOSS.

Remember to allow extra fabric for turning and framing.

- Anchor : 1 / 2 metres
- | Anchor : 2 / 2 metres
- \ Anchor : 275 / 3 metres
- ⊖ Anchor : 1009 / 2 metres
- Anchor : 1010 / 2 metres
- ◇ Anchor : 387 / 3 metres
- ∧ Anchor : 361 / 3 metres
- Anchor : 367 / 3 metres
- ↙ Anchor : 887 / 2 metres
- Anchor : 368 / 2 metres
- ⊗ Anchor : 914 / 2 metres
- ⊤ Anchor : 373 / 2 metres
- ⊕ Anchor : 832 / 3 metres
- ⊞ Anchor : 393 / 3 metres
- ⊗ Anchor : 1086 / 4 metres
- ★ Anchor : 273 / 4 metres
- ♥ Anchor : 1041 / 3 metres
- ⊥ Anchor : 846 / 2 metres
- Anchor : 905 / 2 metres



Legolas Chart (on Parchment fabric) designed by

Tazzie

TERMS OF USE:

You may share this chart with anyone who would like it.

YOU MAY NOT, UNDER ANY CIRCUMSTANCES, SELL THIS CHART.

If you do attempt to sell this chart, you may be liable to prosecution.

If someone has tried to sell this chart to you, please contact me at:

tazzie@mystics.co.uk

Enjoy!