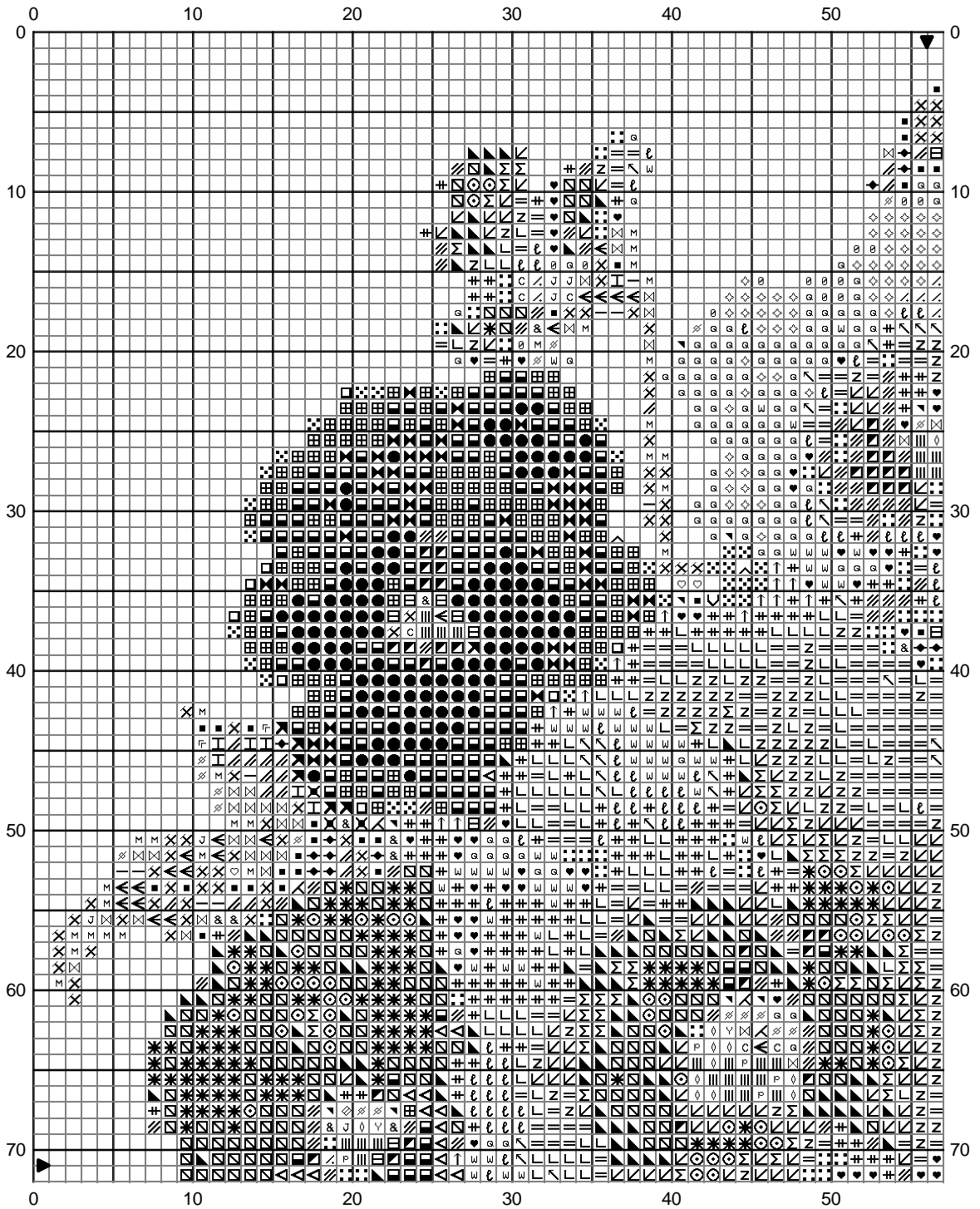


Pansies



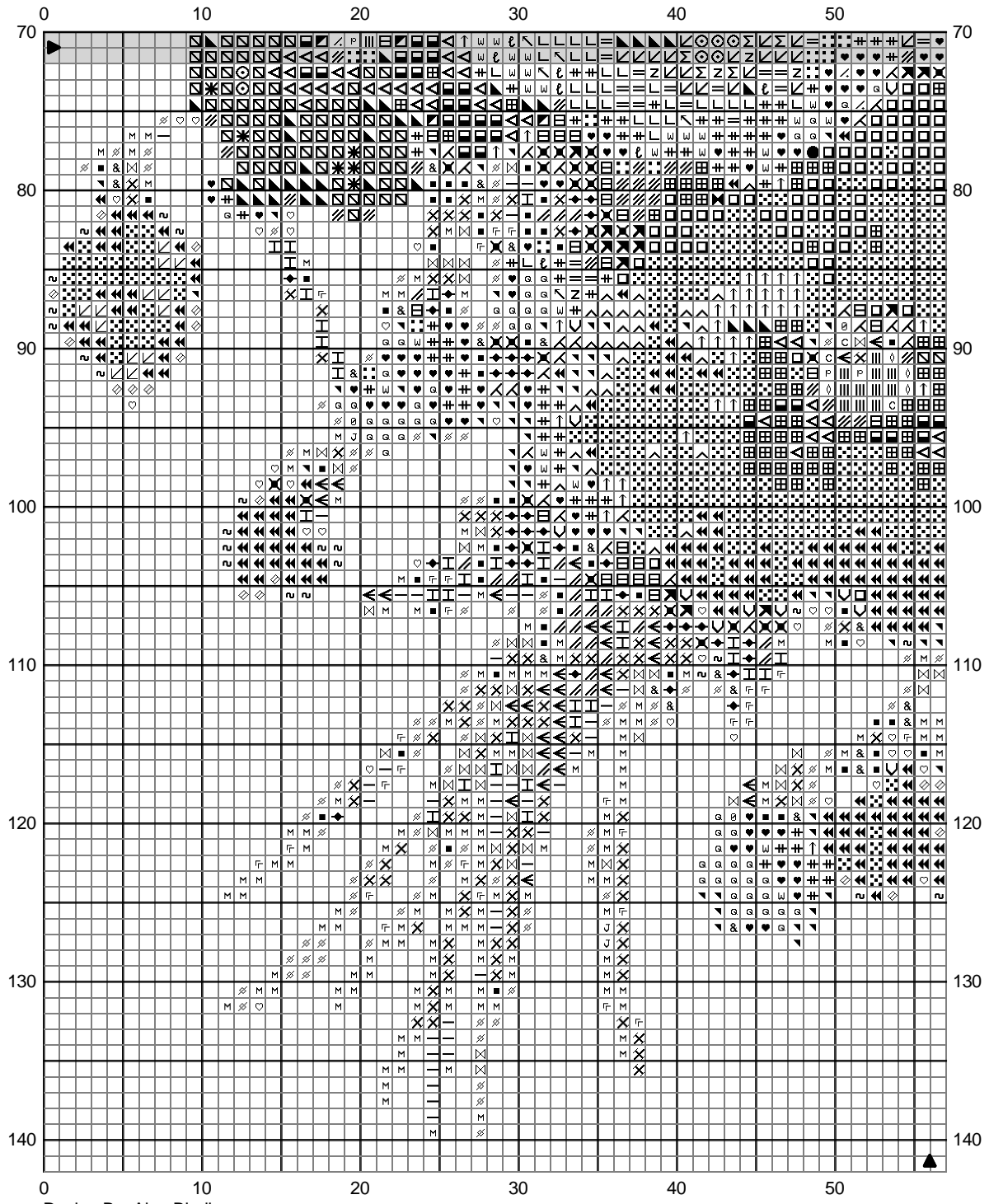
Design By: Alan Binding

Copyright © X-Stitch Images 2001

↑ 209	436	▲ 553	● 791	↘ 931	⊗ 3047	↙ 3687	▩ 3746
^ 210	▣ 451	■ 644	● 792	∪ 932	♡ 3072	= 3688	▣ 3834
✕ 318	& 453	⊙ 718	◻ 793	c 951	ℓ 3354	⊖ 3689	/// 3835
▣ 333	◀ 472	P 727	◇ 800	Z 962	// 3364	∠ 3713	# 3836
▣ 340	⌢ 504	J 739	⊖ 819	◇ 963	Σ 3607	∖ 3716	△ 3837
I 368	◆ 523	Y 745	M 822	✕ 3013	L 3608	⋮ 3727	◇ 3855
— 369	▣ 552	♥ 778	* 917	∠ 3042	w 3609	▼ 3743	⊗ 3866



Pansies



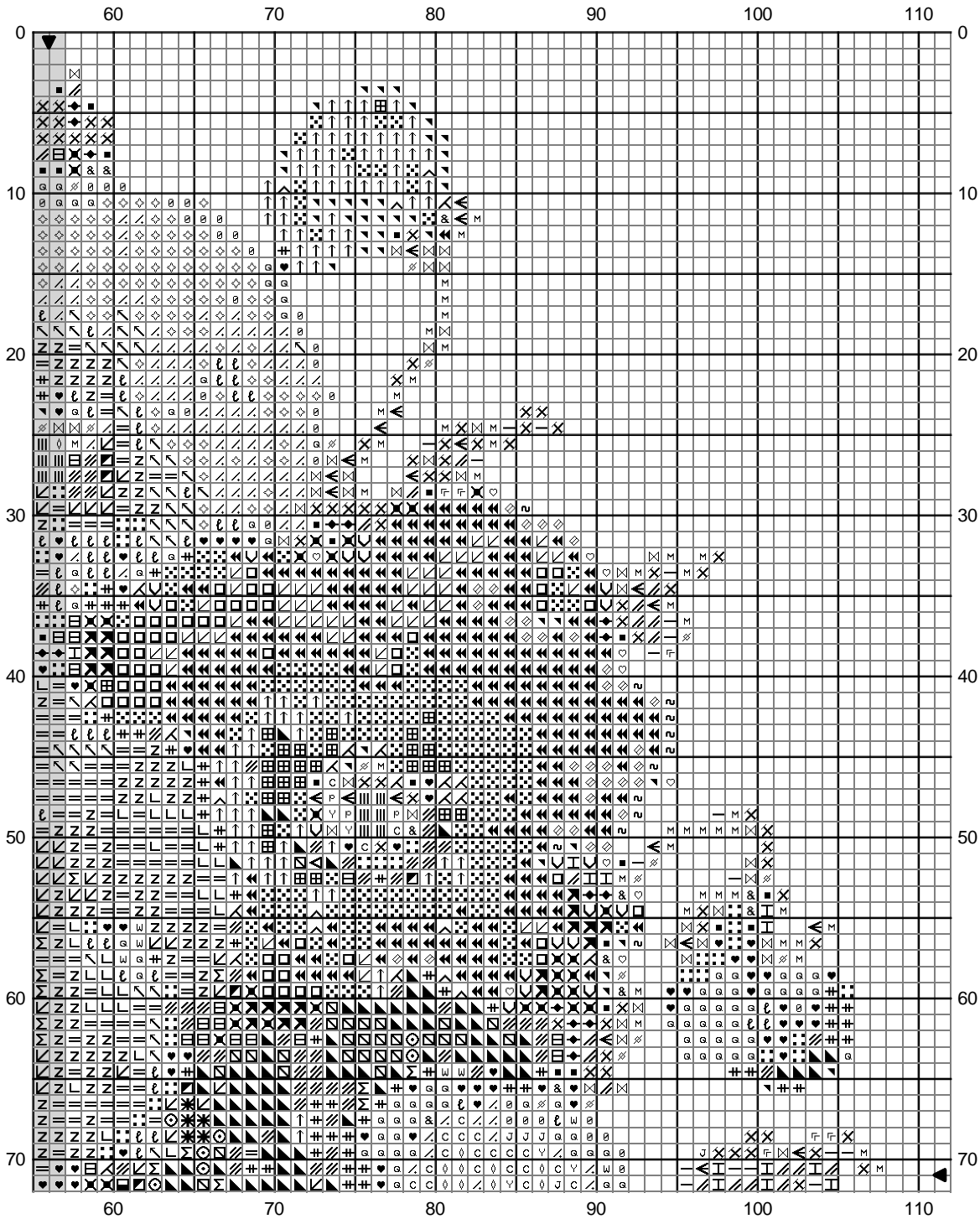
Design By: Alan Binding

Copyright © X-Stitch Images 2001

- | | | | | | | | | |
|-------|-------|-------|-------|--------|---------|--------|---------|--------|
| ↑ 209 | — 369 | ◻ 552 | ● 791 | * 917 | ⊗ 3047 | ∟ 3687 | ▣ 3746 | ⊗ 3866 |
| ∧ 210 | ≡ 436 | ◼ 553 | ⊗ 792 | ∩ 931 | ♥ 3072 | ≡ 3688 | ⊗ 3753 | |
| ⊗ 318 | ▣ 451 | ■ 644 | ◻ 793 | ∩ 932 | ♣ 3354 | ≡ 3689 | ▣ 3834 | |
| ▣ 333 | & 453 | ⊗ 718 | ◇ 800 | c 951 | // 3364 | ∟ 3713 | // 3835 | |
| ▣ 340 | ∧ 472 | P 727 | ∟ 809 | Z 962 | Σ 3607 | ∟ 3716 | # 3836 | |
| ∧ 341 | ∩ 504 | J 739 | ⊗ 819 | X 3013 | L 3608 | ∟ 3727 | ∧ 3837 | |
| I 368 | ♣ 523 | ♥ 778 | M 822 | ∧ 3042 | w 3609 | ∟ 3743 | ◇ 3855 | |



Pansies



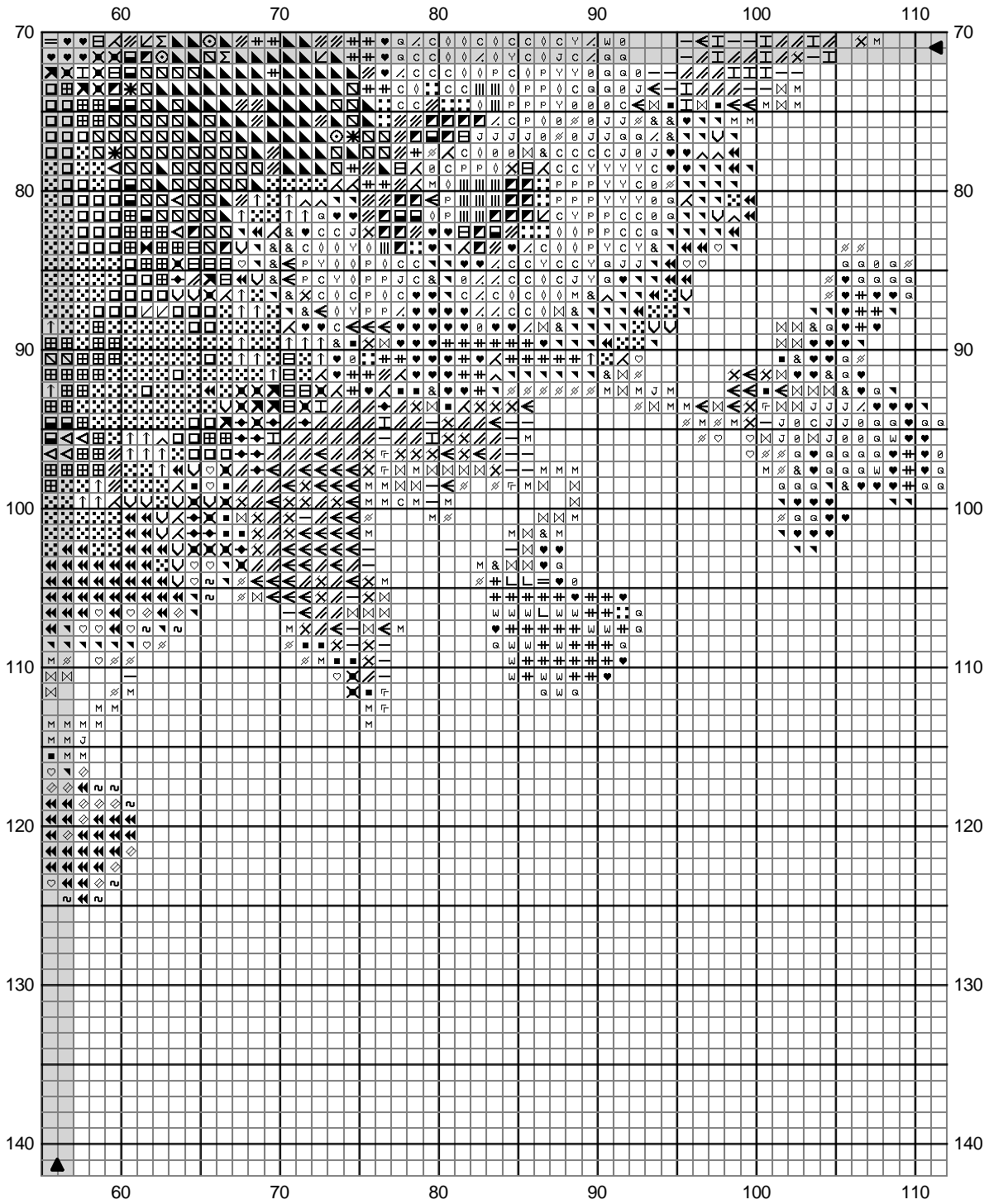
Design By: Alan Binding

Copyright © X-Stitch Images 2001

↑ 209	— 369	◻ 552	♥ 778	↖ 931	⊠ 3047	↙ 3687	⊞ 3746	⊗ 3866
^ 210	≡ 436	◼ 553	◻ 793	∪ 932	♡ 3072	= 3688	⊚ 3753	
✕ 318	⊞ 451	■ 644	◇ 800	c 951	⊗ 3354	⊙ 3689	⊠ 3834	
⊞ 333	& 453	⊙ 718	↙ 809	Z 962	∕ 3364	∕ 3713	∕ 3835	
⊞ 340	↖ 472	P 727	⊙ 819	◇ 963	∑ 3607	∪ 3716	# 3836	
↖ 341	⊞ 504	J 739	M 822	✕ 3013	L 3608	⊞ 3727	△ 3837	
I 368	◆ 523	Y 745	* 917	∧ 3042	W 3609	∪ 3743	◇ 3855	



Pansies



Design By: Alan Binding

Copyright © X-Stitch Images 2001

↑ 209	┌ 368	┐ 504	∩ 727	◇ 800	∪ 932	∥ 3364	⊖ 3689	▣ 3834
∧ 210	└ 369	◊ 523	∪ 739	◇ 809	∩ 951	∑ 3607	∕ 3713	▤ 3835
× 318	≡ 436	▣ 552	∩ 745	⊖ 819	× 3013	∟ 3608	⋮ 3727	# 3836
▣ 333	▣ 451	▣ 553	♥ 778	∩ 822	∩ 3042	∩ 3609	∩ 3743	▣ 3837
▣ 340	& 453	▣ 644	× 792	* 917	∩ 3047	∩ 3687	▣ 3746	◇ 3855
◀ 341	◀ 472	⊙ 718	□ 793	× 931	∩ 3072	∩ 3688	∩ 3753	∩ 3866



Pansies

	DMC	Anchor			
↑	Lavender dk	209	109	36 in	0.11 8m Skeins
↖	Lavender med	210	108	22 in	0.07 8m Skeins
✂	Steel Grey lt	318	399	27 in	0.09 8m Skeins
■	Blue Violet dk	333	119	38 in	0.12 8m Skeins
■	Blue Violet	340	118	97 in	0.31 8m Skeins
■	Blue Violet lt	341	117	88 in	0.28 8m Skeins
H	Pistachio Green lt	368	214	22 in	0.07 8m Skeins
I	Pistachio Green vy lt	369	1043	29 in	0.10 8m Skeins
≡	Tan med	436	1045	15 in	0.05 8m Skeins
&	Shell grey dk	451	233	26 in	0.09 8m Skeins
&	Shell Grey lt	453	231	36 in	0.12 8m Skeins
∨	Avocado Green pale	472	264	39 in	0.13 8m Skeins
∩	Sea Foam Green lt	504	1042	22 in	0.07 8m Skeins
◆	Fern Green lt	523	858	26 in	0.08 8m Skeins
◆	Violet dk	552	99	58 in	0.18 8m Skeins
◆	Violet med	553	98	50 in	0.16 8m Skeins
■	Beige Grey med	644	830	40 in	0.13 8m Skeins
⊙	Mauve med	718	88	16 in	0.05 8m Skeins
P	Topaz vy lt	727	293	12 in	0.04 8m Skeins
J	Tan vy lt	739	1009	19 in	0.06 8m Skeins
Y	Yellow vy lt	745	300	10 in	0.03 8m Skeins
♥	Antique Mauve vy lt	778	1016	60 in	0.19 8m Skeins
●	Cornflower Blue vy dk	791	123	22 in	0.07 8m Skeins
●	Cornflower Blue dk	792	177	13 in	0.04 8m Skeins
■	Cornflower Blue med	793	176	39 in	0.12 8m Skeins
◇	Delft pale	800	159	17 in	0.06 8m Skeins
∟	Delft	809	130	15 in	0.05 8m Skeins
∅	Baby Pink ultra vy lt	819	271	24 in	0.08 8m Skeins
M	Beige Grey lt	822	926	52 in	0.17 8m Skeins
✱	Mauve dk	917	89	26 in	0.09 8m Skeins
✱	Antique Blue med	931	1034	19 in	0.06 8m Skeins
C	Antique Blue lt	932	343	21 in	0.07 8m Skeins
Z	Sportsman Flesh lt	951	880	21 in	0.07 8m Skeins
◆	Dusty Rose med	962	75	30 in	0.10 8m Skeins
◆	Dusty Rose vy lt	963	968	26 in	0.08 8m Skeins
X	Khaki Green lt	3013	854	61 in	0.19 8m Skeins
X	Antique Violet lt	3042	870	28 in	0.09 8m Skeins
⊠	Yellow Beige lt	3047	886	47 in	0.15 8m Skeins
♥	Beaver Grey vy lt	3072	234	27 in	0.09 8m Skeins
ℓ	Dusty Rose	3354	74	27 in	0.09 8m Skeins
∥	Laurel Green med	3364	260	31 in	0.10 8m Skeins
M	Mauve	3607	87	16 in	0.05 8m Skeins
L	Mauve lt med	3608	86	28 in	0.09 8m Skeins
w	Mauve vy lt	3609	85	32 in	0.10 8m Skeins
∟	Plum med	3687	68	26 in	0.09 8m Skeins
≡	Plum lt	3688	1016	42 in	0.14 8m Skeins
∩	Plum vy lt	3689	49	61 in	0.19 8m Skeins
∟	Salmon vy lt	3713	23	25 in	0.08 8m Skeins
∟	Dusty Rose lt	3716	25	18 in	0.06 8m Skeins
∟	Antique Mauve med dk	3727	1016	33 in	0.11 8m Skeins
∟	Antique Violet vy lt	3743	869	50 in	0.16 8m Skeins
⊠	Blue Violet med	3746	1030	45 in	0.14 8m Skeins
∩	Antique Blue ultra vy lt	3753	1031	15 in	0.05 8m Skeins
■	Grape dk	3834	970	20 in	0.07 8m Skeins
∥	Grape	3835	98	40 in	0.13 8m Skeins
∥	Grape lt	3836	96	67 in	0.21 8m Skeins
∇	Lavender ultra dark	3837	99	14 in	0.05 8m Skeins
∅	Autumn Gold lt	3855	301	14 in	0.05 8m Skeins
∅	Ultra very Light Mocha Brown	3866	397	45 in	0.14 8m Skeins

Stitch Count 112 x 138
 Design Area 8 x 9 7/8 inches at 14ct

Note: X-Stitch Images, PO Box 155, Portarlington, VIC 3223, Australia
 p] +61 3 5259 2595f] +61 3 5259 2017
 WebSite www.xstitchimages.com.au
 Email alan@xstitchimages.com.au

Design By: Alan Binding

Copyright © By: X-Stitch Images 2001